



**The past.** This highway began as Native American trails in the early years of America. During our nation's first century, these trails were transformed with the construction of

several turnpikes to handle the burgeoning westward traffic by horse and wagon.

The most famous of the turnpikes connected Albany to Cherry Valley and later was extended to Cazenovia and the Syracuse area. This roadway became known as the Cherry Valley Turnpike and soon was dotted with taverns, hotels and other amenities for travelers. In the 1860s, the Cherry Valley Turnpike became the property of New York State. State and federal programs began providing funds for road building and management assistance shortly after the turn of the century.

With the coming of the automobile, the highway had once again taken on a new life. In 1926, the road was designated as U.S. Route 20, the longest road in the country, running coast to coast a distance of 3,365 miles.

Roadside attractions and tourist cabins provided entertainment and much-needed services to a whole new kind of traveler. One can literally track the westward migration of the state and the nation in the buildings and the landscapes found along Route 20.



**The present.** The quiet neighborhoods and Main Streets of Route 20's historic villages showcase Federal and Greek Revival architectural styles of the Colonial/Turnpike era, a testament to the long history of the region. Along Route 20, travelers pass New World Dutch, English, and gambrel-roof dairy barns, the numerous drive-ins and motor courts of the 1930s-1950s, all against the backdrop of the productive fields and tranquil pastures that first brought prosperity to the region.

**The journey.** So let's get started: take a look inside to discover the 108 miles of Route 20 designated as a New York State Scenic Byway. Throughout the area we have excursion routes from Route 20 to numerous points of interest in our nine-county region. (Excursion routes are designated in blue on the Scenic Byway Map as you turn this page.) While the excursions are set up for those driving west to east, we've included complete route numbers in each of the excursion descriptions to allow east-to-west drivers to "reverse" the trip easily. Either way, the journey will

be as much fun as the destination.

Traveling along Route 20 may add a few minutes to your trip but, for a while, it probably won't seem like the world is racing by quite so fast. Welcome back to *"America's Main Street."*



Route 20 Association of New York State  
[nyroute20.com](http://nyroute20.com)





# Route 20. The road across America

Part of the mission of the Route 20 Association is to work to protect, preserve, interpret and promote the assets of the 108 miles of the Route 20 Scenic Byway and within the 6,500 square miles of the Scenic Byway Corridor. With open land, historic communities, unique architecture and beautiful views bring such significant assets, our work is centered on increasing the awareness and sustainability of the wonderful communities

and unique businesses throughout one of the most scenic areas and along one of the most historic drives in New York State.

We are thankful for the support of our members and particularly grateful to the many businesses that sponsor our efforts. We encourage you to support our members and sponsors in every way you can.

**SCENIC BYWAY**



Use this brochure and map to plan your route of discovery across the Route 20 Scenic Byway. Descriptions of many Scenic Excursions are included throughout this brochure.

Visit [www.nyroute20.com](http://www.nyroute20.com) for information on hundreds of destinations, dining and lodging establishments, events and more. You can even do a geographic search to see what's nearby, wherever you are in the Route 20 Scenic Byway corridor.



# Onondaga County

The communities in Onondaga County are the westernmost points on New York's Route 20 Scenic Byway. The county's name is derived from the name of the Native American people who live in the area. Today, the Onondaga Nation of the Iroquois Federation has a self-governed reservation of about nine square miles within the county. Through this area, US Route 20 traverses dramatic hill-and-valley terrain and the southern part of the county is Appalachian Plateau. **Pompey** is the highest inhabited spot in the county. Within the community is **Pratt's Falls Park**. The park has scenic trails leading to a 137-foot waterfall. This geological wonder was formed by retreating glaciers and was the site of the county's first mill operation in 1796. Next is the town of **LaFayette**. In October, the focus is the **LaFayette Apple Festival** with entertainment, crafts, a scarecrow contest and lots of newly harvested apples. Within LaFayette lies the tiny hamlet of Cardiff. It was the site of the William C. "Stub" Newell farm where the Cardiff Giant – a famous hoax – was discovered in 1869. The "giant" currently resides at The Farmers' Museum in Cooperstown.

**A The Furniture Trail.** Onondaga County is steeped in a history of excellent manufacturers. One of the most widely known artists/manufacturers is Gustav Stickley, the founder of **Stickley Furniture**. Just minutes north of Pompey Center from Route 20 on Pompey Center Road to Route 92 north is **Stickley's Manlius Factory**. Tours of the factory are offered every Tuesday at 10 am, and private tours can be arranged. Or you can journey a little farther north on Route 257 to the **Stickley Museum**, located on the second floor of the original L. & J.G. Stickley Factory at 300 Orchard Street in Fayetteville -- above the Fayetteville Free Library. The museum is a repository for more than a century of furniture making, items that stretch from Gustav Stickley's earliest Arts & Crafts furniture to freshly cut and finished products from the factory floor. From Manlius, travel east on Route 173 (Seneca Turnpike) about 8 miles to Route 17 south and East Lake Road along the east shore of beautiful Cazenovia Lake to the Village of Cazenovia and Route 20.

## LaFayette/Cortland/Pompey

### Beak and Skiff Apple Orchards Apple Hill Campus - A2

At Beak & Skiff Apple Orchards, we have something for everyone! Stop by our 1911 Tasting Room and Distillery, Tavern, General Store, and Bakery. Please refer to our website for current hours. **2708 Lords Hill Road (Route 80), LaFayette • 315-696-6085 or 315-677-5105 • beakandskiff.com**

### Town of Pompey - A2

Established in 1794, Pompey is made up of mostly rural agricultural land with beautiful rolling hills and spectacular vistas. The first academy of Onondaga County was at Pompey Hill. **Scenic Pratt's Falls, a 137 foot waterfall is located in the town. 8354 US Route 20, Pompey • 315-682-9877 • pompey-ny.gov**

### Town of Pompey Historical Society - A2

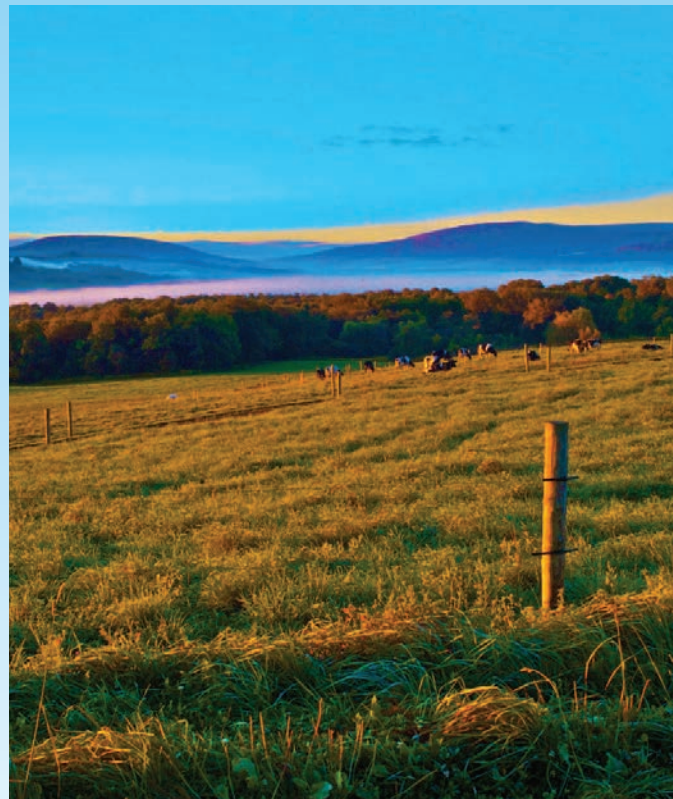
"Founded in 1976". The Town of Pompey Historical Society is located on Route 20 and the Pompey Center Road. Its mission is to collect, preserve and disseminate its history with exhibits, publications and programs, research and genealogy. **8347 US Route 20, Manlius • 315-682-4729 • pompeyhistoricalsociety.org**

### Madison County Tourism - C2

Take a road trip through Madison County. Explore the antique district of Bouckville, enjoy farm to table fare in Hamilton and Cazenovia and unwind in one of the many cozy country inns you'll find along the way. **800-684-7320 • madisontourism.com**

### Greater Cazenovia Area Chamber of Commerce - B2

The Greater Cazenovia Area Chamber of Commerce is committed to the active development of commerce and investment in the greater Cazenovia area and to serving the common needs of businesses operating in the area, with a particular emphasis on small businesses. **59 Albany Street, Cazenovia • 315-655-9243 • cazenoviachamber.com**



**Something completely different.** While you're in the area on a Sunday, check out **Kellish Farm Rolling Hills of Bluegrass Americana**, one-half mile north of Route 20 on Pompey Center Road. Every Sunday afternoon there are old-time music jams. Just stomp your feet or play, sing or dance. Another not-to-be-missed destination is **Beak and Skiff Apple Farms**. In addition to apples, they feature a winery and distillery, just six miles west of LaFayette on Route 20.



**www.nyroute20.com**



**108 Miles  
of Discovery  
LaFayette  
to  
Duanesburg**





1911

ESTABLISHED

MORE THAN JUST APPLES!








beak & skiff apple orchards  
1911 established



SCAN ME

events  
calendar



www.beakandskiff.com

www.1911established.com





THE FLAVORS OF

CENTRAL

NEW YORK

Hi. I'm Stan.

My sweet honey creates quite a buzz around here. Guess it's a product that really sticks with you. Get a taste at farms and markets throughout Central New York. When it comes to treats, this is where you want to "bee".



Get to know the best in fresh.  
Visit **CNYFresh.com**.

I ♥ NY

iloveny.com





Madison County is home to quaint villages and rural communities full of heritage. Along Route 20, you'll find Cazenovia on beautiful **Cazenovia Lake** and home to **Cazenovia College**, many fine shops, restaurants and historic inns as well as the **Lorenzo State Historic Site** where you can experience life on a rural estate or attend any number of free events on the historic grounds. Fresh farm traditions abound at the many farm markets including **Critz Farms** just a few miles south of Cazenovia or **Nelson Farms**, home to a wealth of made-in-New York food products manufactured on site or from local producers. **Peterboro** played an important role in the Underground Railroad and Abolition movements. Morrisville is home to **Morrisville State College**, a hi-tech college with over 80 degree programs. Hamilton provides a unique blend of shopping, dining, arts and education and is home to the **Palace Theater** and **Colgate University**. Madison-Bouckville offer a year-round antique venue with more than 30 dealers dedicated to antiques. Once a year in August, the Madison-Bouckville Antique Week draws more than 2,000 dealers for a week long show along one two-mile stretch of Route 20 for the largest antique show in New York State. A must while visiting Madison Bouckville is a meal at the historic **Hotel Solsville** or **Ye Olde Landmark Tavern**. Plan to spend days and nights in Madison County.

**B The Yellow Brick Road and the Erie Canal.** From Cazenovia, follow Route 13 north to **Chittenango**. Route 13 nearly parallels the route of the once thriving Lehigh Valley Railroad. Just after entering Route 13 north, at Williams Street on the left is the **Historic Lehigh Valley Depot and Caboose**, now the home of Gene Gissin Photography. Along the way, stop to see a picturesque 167-foot waterfall, the main attraction of **Chittenango Falls State Park**. In the Village of Chittenango, you'll find the yellow brick road – now a sidewalk – the inspiration for native son L. Frank Baum who wrote *The Wonderful Wizard of Oz*. Chittenango celebrates all things Oz during their annual **Oz-Stravaganza**, the first weekend of June. While in Chittenango be sure to visit the Award of Excellence winning **Chittenango Landing Canal Boat Museum**. Return to Route 20, or continue a few miles east on Route 5 from Chittenango to the **Village of Canastota**, an

## Cazenovia

### Amanda Bury Antiques - B2

Established 1981, an eclectic mix of fine antiques and funky found objects in historic Cazenovia since 1981. 19th century and early 20th century decorative arts, estate and vintage jewelry and garden items. Summer hours: Fri. & Sat. 11-5, and most Sunday Afternoons. Other times gladly by appt. Follow me on Instagram and FaceBook. Go green, buy an antique! **97 Albany St. Cazenovia 315-655-3326 amandaburyantiques.com**

### Cazenovia Artisans - B2

Pottery, blown glasswork, jewelry, pastels, watercolors, carved and turned wooden pieces, traditional woodworking, oil paintings, unique collage and mixed media, painted furniture, hand woven scarves and shawls, fleece wear and fabric purses, leather work,

Erie Canal Community. The **Canal Town Museum** is located across the street from the Canal. Canastota also is home of the **International Boxing Hall of Fame**. Continue back to Route 20 on S. Peterboro Street/Oxbow Road (Route 25) to Peterboro, a stop on the Underground Railroad and home of the **Abolitionist Hall of Fame** and the **Gerrit Smith Estate National Historic Landmark**, then on to Morrisville, home of Morrisville State College and a great equestrian center.

**C The Land of Windmills.** You will find 20 wind turbines nestled among dairy farms on a hilltop in Madison County and the **FREE Center**, a place to view kiosks on renewable energy, a windmill blade and even to have a picnic. Just west from Morrisville on Route 20 is the community of Nelson. While in Nelson, see the **Nelson Odeon**, a former Grange Hall restored and now used as a performance venue and then stop at **Nelson Farms** for some locally New York State produced products and learn about the entrepreneurial opportunities they provide for the agri-business community. Then, from Nelson, head north on County Route 67 which turns into County Route 23 after about 3 miles. Follow for another 2.5 miles and turn east onto Larkin Road. Turn north onto Bellinger Road, crossing Peterboro Road to the **Fenner Renewable Energy Education Center**. From the FREE Center, continue east on Peterboro Road to Oxbow Road (Route 25) and then south on Oxbow Road to historic Peterboro (see Scenic Excursion B).

**D Hop Culture and Utopian Silver.** Just west of Bouckville, take Route 46 north to **Foothill Hops** and a visit to their shop. Continue on Route 46 north to Oneida and the Madison County Historical Society at 435 Main Street. Visit the exhibit, Bittersweet: The Story of Hop Culture in Central New York, for an introduction to the **Hop Heritage Trail** which marks hop kilns and other hop sites still in existence. The museum also hosts a Hop Festival in September. Be sure to visit the **Oneida Community Mansion House**, a Utopian commune of the 19th century, considered to be the most successful commune in American history. The members learned to make silver knives, forks and spoons, the beginning of what has grown to become Oneida Silversmiths and the Oneida Ltd. of today. There are eight guest rooms for those who wish to stay overnight at the Mansion. Return to Route 20 on Route 46 and continue south on Route 46 for your next adventure.

**E Classic Cars.** Just west of Bouckville, from Route 20, travel south on Route 46 (turns into Route 12B) to Hamilton, home of **Colgate University**, the restored **Palace Theater** and the recently renovated historic **Colgate Inn**. While in Hamilton enjoy the **Village Green**, weekly **Farmers' Market**, galleries and quaint shops. Continue south on Route 12-B to Earlville and the historic **Earlville Opera House**, antique shops and galleries. From Earlville continue south on Route 12B (becomes Route 12) for about 30 minutes to the City of Norwich. Turn east onto Route 23. The **Northeast Classic Car Museum** is about three blocks down and features more than 125 antique and classic cars and much more. Return to Route 20 via Route 12 north to Sangerfield.

fiber arts, artisan soaps, "robots" and lamps made from recycled items. We have something for everyone! Our gallery also hosts Visiting Artist exhibitions with artist receptions. Cazenovia Artisans has been supporting local arts and crafts for over 20 years. **cazenoviaartisans.com** for more information. **39 Albany Street, Cazenovia • 315-655-2225**

### Lavender Blue - B2

A unique experience to step into the color and designs of Provence with the tablecloths of the South of France and wonderful oil cloths from Italy and much more. We now are carrying BEEKMAN 1802 soaps and lotions- a local wonderful Product. A must visit in the heart of Cazenovia. **74 Albany Street, Cazenovia • 315-655-1095 • lavenderbluecazenovia.com**

### Lincklaen House - B2

A landmark since 1835. Comfortable atmosphere, gracious hospitality, elegant dining in the main floor dining rooms and a lighter fare in the pub. Downstairs Hearth Room. 23 luxurious guest rooms. **79 Albany Street, Cazenovia • 315-655-3461 • lincklaenhouse.com**

On Historic Rt. 20 in the Heart of New York State  
Visit our events schedule at: **Cazenovia.com** or call us at: **315.655.9243**

### MacKinnon Liquors - B2

Full-service wine & liquor store. Large selection of wines from around the world and from the Finger Lakes. Many organic wines. Free parking and delivery. **75 Nelson Street, Cazenovia • 315-655-3926 • cazenoviachamber.com/mackinnon-liquors**

### The Museum at the Cazenovia Public Library - B2

2,000 years of history: an Egyptian mummy, Native American and global artifacts, rare birds and wonders of the natural world. Also maps and paintings depicting the local area. M-THURS. 10-8, FRI. 10-6, SAT. 10-4. **100 Albany Street, Cazenovia • 315-655-9322 • cazenoviapubliclibrary.org**

### St. James Roman Catholic Church - B2

A Catholic community in Cazenovia since 1847. St. James commits to serving God through worship, education, pastoral care, administration and development of the Parish Community, by means of Word, Sacrament and Charity. Weekend Mass Sat. at 5:30pm, Sunday at 9am, Child Care 9am Mass. **6 Green Street, Cazenovia • 315-655-3441 • stjamescaz.org**

### Stone Quarry Hill Art Park - B2

Stone Quarry Hill Art Park, with 104 acres of conserved land and over four miles of trails, overlooks the breathtaking rural landscape of Cazenovia and Madison County, New York. Inspired by the relationship between art and nature, the Art Park is dedicated to providing a unique environment for the showcasing of art by emerging and established artists in natural and gallery settings. Its mission is to educate and engage the public through exhibitions, collections, interpretation, and community outreach programs in the arts. **3883 Stone Quarry Road, Cazenovia • 315-655-3196 • stonequarryhillartpark.org**



Tell our members you saw them in the Route 20 Scenic Byway Guide!

Your Destination for Fine Art and Craft Created by Local Artisans

39 Albany Street  
Cazenovia, NY 13035  
**cazenoviaartisans.com**

Hotel & Conference Center

80 Guest Rooms ~ Fitness Center ~ Indoor Pool  
WiFi ~ Full Hot Breakfast ~ 5,000 SF Event Space

315-655-ROOM (7666)  
25 Lakers Lane, Cazenovia, NY 13035  
**www.hampton.com**

Town & County Plaza, Cazenovia, NY 13035

**315-655-3926**


**mackinnonliquors@yahooo.com**

Mon-Thurs 9am-9pm; Fri & Sat 9am-10pm; Sun 12pm-6pm





**Critz Farms and the Critz Farms Brewing and Cider Company - B2**  
Visit our beautiful diversified farm from March through December. Enjoy the Critz Farms Brewing & Cider Co. Tasting Room, festivals, events, and seasonal activities including maple syrup, berry picking, apple and pumpkin picking and Christmas trees.. **Located 3.5 miles south of Route 20 on Route 13. 315-662-3355**  
**[www.critzfarms.com](http://www.critzfarms.com) and [www.critzbrewandcider.com](http://www.critzbrewandcider.com)**



**St. James Catholic Church**  
Fr. Kevin Corcoran, Pastor  
6 Green Street, Cazenovia, NY 13035  
315.655.3441

Saturday 5:30pm  
(For live streamed 5:30pm Mass - go to our website.)  
Sunday 9:00am

*Together in Christ, serving the Gospel by means of the Word,  
Sacrament, Charity, and Justice.*

All are welcome!

[www.stjamescaz.org](http://www.stjamescaz.org) email: [stjamesc@stjamescaz.com](mailto:stjamesc@stjamescaz.com)

## Madison/ Bouckville/ Munnsville/ Nelson

**Town of Nelson**  
Town of Nelson – Established in 1807. Nelson is made up of 3 State Parks. 25 miles of trails. Historic Churches and 3 recreation lakes to enjoy. **4085 Nelson Rd, Cazenovia, NY 13036, 315-655-8582 Ext 1, [www.townofnelson-ny.com](http://www.townofnelson-ny.com).**

**Butternut Hill RV Camping - C2**  
Come to Butternut Hill RV Campground for RVing, camping, and great family vacations. Located on the Historic Cherry Valley Turnpike. Stop in and enjoy the country setting and shop the many antique shops in Central New York. Like us on Facebook. **6893 State Route 20, Bouckville, NY 13310 • 315-893-7497**

**The Depot Antique Gallery - C2**  
Beautiful furniture & collectibles in our 7,000 square foot gallery. Open daily April thru October 10:00 am to 4:00 pm. Open daily November & December 10:00 am to 4:00 pm. Open Friday, Saturday, Sunday only for months of January thru March from 10:00 am to 4:00 pm. **6768 State Route 20, Bouckville • 315-893-7676 • [depotantiquegallery.com](http://depotantiquegallery.com)**

**Foothill Farms Hops - C2**  
Started in 2001 to promote the rebirth of the hops industry. Farm brewery now open. Sample beer made with 100% local ingredients and tour the hopyard to learn hops history. Homebrewing supplies and local products in the brewshop/tasting room. **5024 State Route 46, Munnsville • 315-495-2451 • [foothillhops.com](http://foothillhops.com)**

**Hotel Solsville - C2**  
One mile north of Route 20 & downtown Madison. A refurbished 1800s hotel offering cozy tavern dining or full service dining in the period dining room. You are never a stranger at the Hotel Solsville. **7243 Valley Road, Madison • 315-893-7698**  
**[hotelsolsville.com](http://hotelsolsville.com)**

**Kountry Kupboard II - C2**  
Right on Route 20 3 miles east of Madison. Fresh baked goods all week, deli, bulk foods, cheese, chocolate, nuts, snacks, coffee, baking supplies and much more. M-F 8-5, Saturday 8-4. Closed Sunday. **7967 US Route 20, Madison • 315-893-7437**  
**[earleyfarm.com](http://earleyfarm.com)**

**Quack's Village Inn - C2**  
Family dining in a relaxed, comfortable atmosphere. Serving the community since 1947. Breakfast, lunch & dinners with a wide variety of comfort foods. Good food at reasonable prices. Satisfaction guaranteed. Closed Mon. Soft Ice Cream next door. **7239 Route 20, Madison • 315-893-1806 • [quacksvillageinn.com](http://quacksvillageinn.com)**

**Ray Brothers BBQ - C2**  
We are an authentic, slow cooked BBQ family owned and operated, joint smoking menu items over local woods. Outdoor deck and concert venue. Voted Best Ribs in NYS. **6474 Rt 20 • Bouckville, NY 13310 • 315-893-7200**

**Victorian Rose - C2**  
Multi-Dealer Shop featuring an eclectic mix of vintage & antique items, home decor including Mid-Century & antique furniture, glassware, milk bottles, collectibles, plus much more. Like us on Facebook. **3371 Maple Ave., Bouckville • 315-893-1786 • [victorianrosevintage.com](http://victorianrosevintage.com)**

## Hamilton, Earlville, Eaton & Norwich

**Colgate Bookstore - C2**  
Central NY's largest downtown independent bookstore with more than 23,000 titles for every age, interest and style. Children's book room, games, toys, computers and tech accessories, art & school supplies and more. **3 Utica Street, Hamilton • 315-228-7480 • [colgatebookstore.com](http://colgatebookstore.com)**

**Earlville Opera House - C3**  
The Earlville Opera House was founded in 1970 as a not-for-profit, volunteer-based, community service organization promoting the arts in a rural region of central New York by offering programs of cultural, educational, and historical significance; and preserving and restoring the architectural and historic integrity of the Earlville Opera House, a unique second-story theater enriching Central New York through music and arts since 1892. **18 East Main Street, Earlville • 315-691-3550 • [earlvilleoperahouse.com](http://earlvilleoperahouse.com)**

**Jewett's Cheese House - D2**  
Celebrating 50 years. Third generation family business specializing in aged NY Cheddar. Selling aged 1 year to 24 years. Many locally products. Cheeses, meats, honey, maple syrup, mustards and much more. Open Monday-Friday 9:30-5. Most Sundays from 10:30-3. Closed Saturdays. We ship. **934 Earlville Road, Earlville • 800-638-3836 • [jewettscheese.com](http://jewettscheese.com)**

**The Old Town of Eaton Museum - C2**  
Eaton, settled in the early 1790's, is the site of Madison County's first clearing and was home to Authors, Missionaries, Inventors & Wood, Taber & Morse Steam Engine Works. The old Town of Eaton Museum invites you to visit and learn the rich history of this historic town. Find us on Facebook. **2776 River Road, Eaton, NY 13334 • 315-684-8032 • [www.historystarproduction.com](http://www.historystarproduction.com)**

**Northeast Classic Car Museum - C4**  
The Northeast Classic Car Museum, located at 24 Rexford Street, Norwich, NY 13815, is a world class tourist destination that features over 200 classic vehicles on display. **For more information visit our website at [www.classiccarmuseum.org](http://www.classiccarmuseum.org)**

NOW OFFERING

# CATERING

Open Daily for Breakfast,  
Lunch & Dinner

7239 Route 20, Madison, NY

[www.quacksvillageinn.com](http://www.quacksvillageinn.com) • 315-893-1806



**Morrisville State College**  
Morrisville State College is a model of innovative, applied education. The college was ranked among the Best Regional Colleges in the North by U.S. News and World Report Best Colleges 2016 issue and was also recognized in the Top Public Schools, Regional Colleges North in the 2016 Best Colleges rankings. An internship program that prepares students for success in the workplace ranks among the top six in the nation. **80 Eaton Street, Morrisville • 315-684-6000**  
**[morrisville.edu](http://morrisville.edu)**

**Copper Turret Restaurant**  
**Handcrafted food and beer.** Enjoy our delicious & innovative menu featuring fresh, local ingredients, our extensive beer selection, and our team approach to service – no tipping necessary! Open for lunch & dinner Tuesday-Saturday. **15 W. Main St., Morrisville • 315-684-6699 • [copperturret.com](http://copperturret.com)**

**SUNY Morrisville Equine Rehabilitation Center (ERC)**  
**Helping injured equine athletes recover since 2011.** The ERC is open to the public and encourages travelers & horse enthusiasts alike to stop and tour our state-of-the-art facility. Please call to schedule a visit. **4414 US Route 20, Morrisville • 315-684-6601 • [equinerehab.morrisville.edu](http://equinerehab.morrisville.edu)**

**SUNY Morrisville IcePlex**  
Open year round! Home of SUNY Morrisville's Division III hockey teams and other clubs. Check our website for skating times; skate rentals are available. **105 Madison Rd., Morrisville • 315-684-6632 • [iceplex.morrisville.edu](http://iceplex.morrisville.edu)**

**Nelson Farms Country Store & 4 Corners Tap Room**  
**Offering the best of New York State.** Offering hundreds of New York State specialty food and gift items from all regions of NYS, including maple products, and pouring local brews regularly in our tap room. **3261 US Route 20, Cazenovia • 315-655-3301 • [nelsonfarms.org](http://nelsonfarms.org)**



NY Roadies are members for 2023!!!



# NYS Route 20 Roadies

**Participants who complete 5 events will receive a \$5 dollar Stewart's Gift Card. Participants who complete 11 events will receive a pair of embroidered running pants. Contact Jean Kosina ([jmkosina@gmail.com](mailto:jmkosina@gmail.com)) after each race is completed (monitoring purposes).**

- June 11th - Patriot Run 5K/10K, Rome
- June 17th - 5K Run/Walk for Veterans, West Winfield
- July 4th - 50th Annual Cazenovia Foot Races 10K/5K/1 Mile Fun Run, Cazenovia
- July 16th - RSCC Sundae 5K/10K Run, 2 Mile Walk, Richfield Springs
- July 22nd - Believe 271 5K Run/Walk, Bridgewater
- July 29th - Honor America Days 5K, Rome
- August 10th - Tromptown 5K, DeRuyter
- August 12th - Tromptown Half Marathon, DeRuyter
- August 12th - Landis Arboretum 15th Perennial 5K Forest Run/Walk, Esperence
- August 19th - Breakfast Run/Walk, Richfield Springs
- August 26th Falling Footsteps (Road Edition) 5K Run, 1 Mile Walk, Richfield Springs
- August 26th - Fireworks over the Falls 5K Run/Walk, Oriskany Falls
- September 9th - 13th Annual 5K Race for ChildRUN & 1 Mile Walk, Morrisville
- September 10th - Copper City Classic 4 Mile & 10 Mile, Rome
- September 16th - Mary Cleary 5K, Waterville
- September 17th - Richfield Springs Co-op 5K, Richfield Springs
- September 24th - Tromptown Marathon, 1/2 Marathon & 5K, DeRuyter
- September 30th Colie's Run 6K/1 Mile Walk, Richfield Springs
- October 21st - 26th Annual Eaton 5K Run/Walk, Eaton
- October 28th - Halloween Brunch Run/Walk, Richfield Springs
- November 11th - Veteran's Weekend 5K, Cherry Valley

**<https://www.facebook.com>  
[www.runsignup.com](http://www.runsignup.com)**



## SCENIC VIEW CAMPGROUND BAR & GRILL

- RV Full Hook-Up, Water, Electric
- Cabins and Tent Sites Available
- Bar & Grill on Site

### Hours:

Monday 4pm-11pm  
Tuesday & Wednesday Closed  
Thursday 4pm-11pm  
Friday & Saturday 12pm-11pm and  
Sunday 12pm-8pm

### DAILY RESTAURANT SPECIALS

386 Truax Road, West Winfield NY 13491  
35 minutes from Cooperstown  
**315-204-4171** (Campground)  
**315-204-4136** (Bar & Grill)



**NORTHEAST  
Classic Car  
MUSEUM**

**OPEN  
7 DAYS  
A WEEK**

**Over 200 Vehicles on Display!**  
24 Rexford Street  
Norwich, NY 13815  
607-334-2886





### Bridgewater/Cassville

**Town of Bridgewater - D2**  
404 State Route 8, Bridgewater, NY 13313. Phone 315-822-6909 ext. 8.  
Bridgewaterny.org and Like Us on Facebook

### Bridgewater Historical Society - D2

Located in the restored former Union train station (on the National and State Register of Historic Buildings), housing displays of historical artifacts. 9685 US Route 20, Bridgewater • 315-822-6652 • townofbridgewaterny.org

### West Winfield

#### Town of Winfield - E2

Established in 1817 and named for war hero Winfield Scott, the Town of Winfield is located in the southeast corner of Herkimer County. The town features picturesque rolling hills, vibrant businesses and civic organizations, and a beautiful park located within the Village of West Winfield Route 20.

### Jeannies Dream Motel - E2

A family owned motel that provides a country side of living with reasonable rates for the area. During your stay you will find a quaint clean and comfortable for you to get a restful stay. We are conveniently located on Route 20 with a view of rolling hills for a great way to see a sunrise or sunset. We are open year round for all your vacation needs to come and visit family or visiting local attractions. During the months of September through April we have limited rooms available. During this time we welcome having guests that are looking to visit family, see fall foliage or hunting. Find us on Facebook 1354 US Highway 20, West Winfield • 315-822-3468 • tricia@jeanniesdreammotel.com

### The Red Door Dairy Store - E2

Sunday Breakfast Buffets & Friday Fish Fry. Open for Breakfast & Lunch during the winter. Summer – Open for Breakfast, Lunch and Dinner as well as soft and hard ice cream!!! Voted one of the Best in the Area on Frog 104!!! 661 US Route 20, West Winfield • 315-822-3493

### Kylie's Diner - E2

Open 7 days – Breakfast and Lunch. Fish Fry every Friday. Call for Daily Specials. Hours: Sunday: 7 am to 12pm (noon) (Breakfast Only) Monday -Thursday: 7 am to 2 pm, Friday: 7 am to 8 pm (Breakfast Ends At Noon) (Cooking Ends At 7:45 pm) Saturday: 7 am to 1 pm. Takeouts always available. 370 West Main St., Route 20, West Winfield • 315-822-0035

### Scenic View Campground/Bar and Grill - E2

RV full hook-up, water, electric, cabins and tent sites available. Bar and Grill on site-open Mon 4-11, Tues/Wed closed, Thurs 4-11, Friday and Saturday 12-11 and Sunday 12-8. 35 minutes from Cooperstown, Daily Special @ Restaurant. 386 Truax Rd, West Winfield, NY 13491 • (315) 204-4171 • www.scenicviewcampgroundny.com

### Herkimer/Oriskany/Mohawk

#### Herkimer County - F1

A region rich in history and tradition located at the foothills of the Adirondacks. Family oriented communities and four seasons of recreation. A diamond in the rough that provides economic development as well as a great quality of life. 109 Mary Street, Herkimer • 315-867-1002 • herkimercounty.org

#### Herkimer County Tourism - F1

Herkimer County offers hundreds of years of history in the Herkimer Home State Historic Site, thousands of attractions and millions of years of geology in the Adirondack Mountains and Herkimer Diamond Mines. 3140 State Route 28, Old Forge • 315-369-9983 visitherkimercountyny.com

#### Herkimer County Chamber of Commerce - F1

The Herkimer County Chamber is a not for profit membership organization dedicated to foster a positive business environment for private and public entities operating in the County, and to assure the successful continuation of and growth of current and new businesses in the Region. 420 East German Street, Herkimer • 315-866-7820 herkimercountychamberofcommerce.com

#### Red Roof Inn - F1

4.5 Trip Advisor Rating 8 years in a row. Seasonal Pool and Continental Breakfast. Recently upgrades to rooms. 100 Marginal Rd., Herkimer, NY • 315-866-0490 • redroof.com

### Little Falls

#### Little Falls Antique Center - F1

Co-op antique center in historic Canal Place on the Mohawk River. Antiques, collectibles, artists, books, gifts and more. Open daily 10-5 except for 7 major holidays. 25 West Mill Street, Little Falls • 315-823-4309 • littlefallsantiquecenter.com

OUR MISSION IS TO FOSTER A  
POSITIVE BUSINESS ENVIRONMENT  
FOR PRIVATE AND PUBLIC ENTITIES  
OPERATING IN THE COUNTY TO  
ASSURE THE SUCCESSFUL  
CONTINUATION OF, AND GROWTH  
OF, CURRENT AND NEW BUSINESS  
IN OUR REGION.



420 EAST GERMAN STREET

HERKIMER, NY 13350

315-866-7820

SHARRER@HERKIMERCOUNTYCHAMBER.COM

## From the Mohawk Valley...

**Herkimer  
County  
NEW YORK**

New York's  
**TALLEST**  
County



Erie Canal Cruises  
Mohawk



McCauley Mountain  
Scenic Chairlift Ride  
Old Forge  
Adirondacks

## To the Adirondack Mountains

Scenic Byways along towns, forests,  
mountains and lakes

Over one hundred years of history,  
heritage and traditions

Small town hospitality

World-Class Attractions

—Enchanted Forest Water Safari

—Herkimer Diamond Mines



See All of Herkimer County  
VisitHerkimerCounty.com

## Earlville Opera House 2023

earlvilleoperahouse.com // 315-691-3550

Enriching the CNY community through visual and performing arts since 1892!



**Cruisin' Into Waterville**  
Come join the fun September 16, 2023  
in beautiful and historic Waterville, NY  
www.watervillefirst.org

### Sangerfield/Waterville

#### Cruisin' Into Waterville - D2

September 16, 2023. A fun filled day with huge car, motorcycle and tractor show, softball tournament, parade, music all day with a variety of bands. Craft fair, BBQ, Mary Cleary Run/Walk and chili cook off. Entertainment for everyone at no charge. 147 West Main Street, Waterville • 315-841-4859 • watervillefirst.org

#### Village of Waterville - D2

Once known as the Hops Capital of the World and home of the famous Loomis Gang – just one mile north of Route 20 on US Route 12. Waterville has a noteworthy Historical Society along with fine restaurants, pubs and shops. 122 Barton Avenue, Waterville • 315-841-4221 • villageofwaterville.org



# Herkimer County

Herkimer County is a treasure trove of history and scenic beauty. The trip along Route 20 takes visitors through two communities in the south of Herkimer County: **West Winfield** and **Warren**. The 1869/70 history of West Winfield says: “West Winfield contains two churches, the West Winfield Academy, a bank, a grist mill, a saw mill, a tannery, a cheese box factory, a newspaper office and about 400 inhabitants”. Today West Winfield is a quiet community home to the local schools of Winfield Township and a beautiful community park, but you’ll want to explore some more. Just north of Route 20 in Richfield Springs, on Route 167, is **Sunset Hill** in Warren -- known as the Mrs. Eugene D. Stocker Estate -- is an historic home complex with a main house, guest house and other buildings designed by Dwight James Baum for Mrs. Stocker’s seasonal estate. In Herkimer County, early development of large valley villages and good transport to the east and west was the **Erie Canal**. The country’s oldest industry, Remington Arms, is still a major player in the county’s economy. Herkimer County is also the home of a large section of the Erie Canal and world famous Herkimer Diamonds found at Herkimer Diamond Mines and the much smaller Ace of Diamonds Mine.

**G The History Loop.** The Mohawk Valley and the Erie Canal are filled with History. Exit Route 20 on State Route 51 north, just east of West Winfield and travel about 12 miles winding along Steel Creek to Ilion on the Mohawk River & Erie Canal. In Ilion is **Remington Arms**, the nation’s oldest continually operating manufacturer and the only US manufacturer of firearms and ammunition. Remington Arms has a store located at Gems Along the Mohawk (See Excursion H).

Now you have several choices – if you do not have a New York State map, now would be a good time to pick up one! Note that Route 5 travels on the north side of the Mohawk River and Route 5S on the south side.

**From Ilion via Route 5** continue north on Route 51, under Route 5S and turn right into the Ilion Marina for the **Dockside Café**, picnic area, RV park and restrooms, all on the Mohawk River/Erie Canal. Cross the Mohawk and travel west on Route 5 for the Revolutionary Byway through an area steeped in military history. OR travel Route 5 east to **Herkimer** and **Little Falls** and join the Southern Adirondack Trail. The village of Herkimer is filled with gems – literally. In Herkimer, on the Erie Canal you will find Gems Along the Mohawk, the Waterfront Grille and Erie Cruises (see Excursion H, Diamonds and the Erie Canal). In town you must stop at **Crazy Otto’s Empire Diner** on Albany Street to enjoy an authentic 1952 Mountainview silver diner. For more of the history of Herkimer County, visit Herkimer’s Historic Four Corners in Herkimer. It is composed of several historic buildings, all listed on the National Register of Historic Places. Their Museum is open weekdays, with Saturday hours in the summer.

From Herkimer follow Route 5 east to Little Falls, a once thriving mill village undergoing a renaissance along the Erie Canal with fine shops, antique shops, restaurants and accommodations. From Little Falls continue east on Route 5 to Route 169 to 5S to visit the historic Georgian style **General Herkimer Home**. Continuing east on Route 5S you will pass the historic little white Indian Castle Church built in 1769. As you near Fort Plain there is the Fort Plain Museum, a Church built in 1769. As you near **Fort Plain** there is the **Fort Plain Museum**, a former Revolutionary War Fort built in 1776 and Lock 15. At the junction of Routes 5S, 163 and 80, you can travel south on Route 80 to return to Route 20 (Excursion Q – Montgomery County) or continue on to Cooperstown as noted above. (For points of interest on Route 80, see Excursion Q in Montgomery County) OR, continue on 5S through Fort Plain for 3.5 miles to the village of **Canajoharie** where famous women’s rights activist Susan B. Anthony once taught school. Joseph Brant, a Mohawk Chief and Molly Brant, a Mohawk Leader also lived in Canajoharie. Visit the businesses and **Arkell Museum** in historic Canajoharie. If you have made it all the way to Canajoharie you can now return to Route 20 and the historic village of Sharon Springs via Route 10 south – and we hope you have enjoyed your excursion.

**OR, from Ilion via Route 5S** travel back and forth under the NYS Thruway and along the south side of the Mohawk River to enjoy several locks on the Erie Canal, rolling farmlands and interesting communities. From Ilion travel east on Clark/Main Street just a short three miles to the village of **Mohawk**. On East Main Street in Mohawk is the F.E. Spinner Home. Spinner was a Herkimer County Sheriff, Member of Congress and served

as Treasurer of the United States under President Abraham Lincoln. From Mohawk you can travel south back to Route 20 via Route 28 south or continue south to Cooperstown (Otsego County) and Excursions I J, K or L, OR, continue east on route 5S for 22 miles to the village of Fort Plain, past the Fort Herkimer Church built in 1767, Locks 18, 17 (the highest lift lock in the world at 40.5 feet), and locks 16 & 15. At the junction of Route 169 and Route 5S, stop and visit the historic Georgian style **General Herkimer Home**, visitor center and grounds. Continue east on 5S to **Fort Plain** and **Canajoharie** as noted above.

**H Icons and Iconic Beauty.** From the center of **Richfield Springs** (Otsego County), follow Route 167 north to Jordanville, home of the **Holy Trinity Monastery of the Russian Orthodox Church** outside Russia. The community is dedicated to a life of prayer and obedience. It consists of impressive buildings and an other-worldly way of life.

**Diamonds and the Erie Canal.** Leaving Jordanville, follow County Route 18 west to Route 28 north and continue north into Herkimer to find some truly unique treasures. You’ll be able to experience the Erie Canal firsthand aboard **Erie Canal Cruises**. The Erie Canal, which extends from Albany to Buffalo, shaped the course of settlement and commerce between the Atlantic Seaboard and the interior of the United States. The cruise is fun and historically fascinating, taking guests back to a time when the Erie Canal was only a vision and the boats were pulled by mules and horses. In addition to hearing the history of the canal, visitors travel through one of the locks -- raised or lowered 20 feet inside the lock walls -- for an unforgettable experience. At the Erie Canal Cruises dock you will want to experience **Gems Along the Mohawk** with more than 80 local businesses and products represented. Consider lunch or dinner at the **Waterfront Grille**, also located in the Gems Along the Mohawk building. Continue north on Route 28 to **Herkimer Diamond Mines** where guests literally mine for “diamonds” -- actually “doubly-terminated quartz crystals.” These precious stones can be found in collections internationally. The Herkimer Diamond Mines Resort today boasts the largest jewelry, rock and gem store in the Northeast. It also has dining options at the **Miners’ Table** and marvelous campsites along West Canada Creek at the **Herkimer Diamond Mines KOA Resort**, voted the best in North America for 2009. Return to Herkimer or Mohawk and pick up your journey on Routes 5 or 5S.



## Come enjoy a ride on the Richfield Springs Scenic Railway

- ☼ Sunset Rides
- ☼ Nature Discovery Trains
- ☼ Special Event Trains
- ☼ Fall Foliage Trains
- ☼ Christmas Train with Santa
- ☼ Train Museum

**LIMITED SEATS AVAILABLE  
RESERVATIONS RECOMMENDED**

**Adults - \$20  
Children 3-12 - \$10  
Children under 3 ride free!**

**Parking & Check In:**  
At the Newark Milk and Cream Company  
Building located at 168 Mc Koons Road,  
Richfield Springs, NY 13439



Group Tours and  
Private Parties

Like us on  
**Facebook**



## so close to the Craft Trails



Take the trail to Oneida County's  
breweries, distilleries and wineries.  
There's even a **FREE T-SHIRT** for  
you at the end!



Join the adventure and  
discover the joys of our rich  
cheese-making heritage!  
Get a **FREE TOTE BAG** at the end!



HEART OF NEW YORK CRAFT BEVERAGE TRAIL



CENTRAL NEW YORK CHEESE TRAIL

There is so much to take-in in Oneida County!  
To learn more about these and other events,  
**SCAN FOR TRAIL DETAILS.**



*Your guide to all things Oneida County.*

\* I LOVE NEW YORK is a registered trademark and service mark of the  
New York State Department of Economic Development; used with permission.



Lake Chalet Campground

# Oneida County

The Route 20 Scenic Byway has two communities in southern Oneida County – **Bridgewater** and **Sangerfield**. Just north of Sangerfield on Route 12 is the charming Village of Waterville, through which the Sangerfield River flows. Within Sangerfield is **Tassle Hill**, the highest point in Oneida County, climbing 1,942 feet. Elsewhere in Sangerfield is **Nine-Mile Swamp**, the historic home of the infamous Loomis Gang of the 19th century that terrorized Central New York. Bridgewater is largely an agricultural community. It is the birthplace of Stephen Moulton Babcock, called the “Father of Scientific Dairying”. Also in Bridgewater, the **Western Star Lodge** is the oldest Masonic Lodge in Oneida County, chartered in 1797, with such prominent signers of its charter as Robert Livingston, one of the five drafters of the Declaration of Independence. You’ll also see large Victorian homes that are now bed and breakfasts, restaurants and antique stores. Just a bit north of Bridgewater on Route 8, on a six-acre private lake is the **Lake Chalet Campground** and motel, complete with a flowing brook and fishing. **Chittning Pond**, adjacent to Route 20 and four miles west of the Village of Bridgewater, has a state boat launch.

**F Just a mile away.** From the junction of Routes 12 & 20 in Sangerfield continue just one mile north to **Waterville**, “Historic Hop Capital of the World”, settled in 1792 and referred to the “Garden Spot of New York State” because of its wealth of foliage and delightful climate. It is the birthplace of George Eastman who founded the Eastman Kodak Company. It is too known for that notorious family of outlaws, The Loomis Gang. Visit the Village of Waterville’s **Historic Triangle District**. The Waterville Historical Society building was built in 1842 and maintains a large collection of original hop equipment. The Village is home to the annual “**Crusin’ Into Waterville**” festival held the third Saturday in September.

## Oneida County Tourism

Central New York’s Getaway Region. Utica, Rome, Verona and Sylvan Beach. Family Fun Destination. Enjoy the beach, 30 golf courses, Turning Stone Casino Resort, Vernon Downs Casino, Zoos, Fort Stanwix National Monument, Erie Canal and so much more. Now two locations to serve your travel information needs: **Exit 31, NYS Thruway, Utica AND in Historic Union Station, 321 Main Street, Utica • 315-724-7221 • oneidacountytourism.com**



# Otsego County

Pro Tip: Much of Otsego County is off-the-grid as far as Wi-Fi service goes, so be sure to have your mapping situated before venturing off your main course!

Once you enter Otsego County via Route 20, you will find yourself in a land where culture is met with applause at world-class musical performances, at national art exhibitions, at outdoor theater and at a multitude of concerts. Here, the present represents the past, through hands-on demonstrations at museums and with classically trained musicians. Catch yourself at **Doubleday Field**, the famous spot fabled to be where the first baseball game was ever played, in nearby Cooperstown. Historic sites and districts throughout make for the perfect trip to create lasting memories of this part of Central New York on the Scenic Byway.

Route 20 serves as the northern border to the County, bringing you through historic Richfield Springs and Springfield or follow signs for Cherry Valley. In each village, you will find more than you expect in such a beautiful rural setting...good eats, eclectic antique/craft/thrift shops and local, historic museums.

Richfield Springs is home to three National Historic Districts and in the 19th century, was a resort community known for its mineral springs. Stop by **Spring Park** as you pass through and maybe even taste the famous, healing, sulphur water. See the rustic bandstand and if you schedule a visit on a Wednesday night, summer concerts take place in the park pavilion. **Canadarago Lake**, just south of the Village, is the second largest lake in the Susquehanna watershed which offers great fishing opportunities. Launch a boat at **Canadarago State Marine Park** or swim at **Baker's Beach**, both on the West side of the lake, accessed by Rt. 28.

The scenic route to Cooperstown from **Richfield Springs** follows East Lake Road (Route 22) along the shore of Canadarago Lake. You'll come upon **The Lake House Restaurant & Lodge**, built in 1843, which has a prime view of the lake from which you can enjoy live music in the summer months.

**The Cooperstown Beverage Trail.** Looking to wet your whistle? **The Cooperstown Beverage Trail** is worthy of a trip off Route 20, so we recommend bringing along a designated driver! Traveling caravan-style? ...consider spending a little more time in the area and ride in style with the **Leatherstocking Trolley**. This pleasurable distraction will take you to Burlington on State Highway 80 where **Rustic Ridge Winery** and newly opened **High Burl Brewery** (2020) are situated on the same property with picturesque, outdoor seating and often a food truck!

Continuing on this Beverage Trail “loop”, take a few roads less traveled to reach **Bear Pond Winery** again on Rt. 28. Producing over twenty of their own wines, as well as carrying others, they'll surely have a flavor or two to quench your thirst. Once you've filled the trunk with a case, head North on Rt 28 to enjoy an indoor game of cornhole at the **Cooperstown Brewing Company**. CBC offers nine baseball-themed beers and four sodas, guaranteed to impress the game's superfans of any age. Taste the very essence of this bucket list destination.

Just three miles North, on County Highway 33, you will find yourself rolling up on the most famous of the Cooperstown area beer'stinations, **Brewery Ommegang**. This wicked combination of both indoor and outdoor seating, a cool ambiance, and bold flavors is sure to make you thirsting for more. Experience it all with a bite to eat, an official tasting and maybe even a tour! This stop is almost another two-for-one with **Red Shed Brewery** only a half mile up the road. Be sure to check out both event calendars for the likes of live music to Brunch Bingo. Both offer mouth-watering, soul-soothing food dishes, worth the drive!

By then, someone among the group is likely ready for more wine! Only minutes away, again on Rt. 28 stop at the brand new **Montezuma Winery** for a refreshing wine slushy and a tasting. Finally, following still Rt. 28, just before entering Fly Creek, ready your tasters for flavors at **Pail Shop Vineyards, Winery & Tasting Room**. Try to catch one of their ‘Sangrias at Sunset’ summer events. This stop will awaken all your senses with its natural beauty and ready you for the rest of your Rt.20 trip.

**K Cooperstown Connections.** For an alternative route to Cooperstown from Route 20, turn south onto Route 80 at Springfield Center for a drive along Otsego Lake, coined “Glimmerglass” by author James Fenimore Cooper in his novel The Deerslayer. Stop for a round at the **Otsego Golf Club** (1894), one of America's oldest golf courses. Travel on to the **Glimmerglass Festival**, where each summer (July & August) world class opera, musicals, and other performances can be enjoyed. The beautiful 9-mile journey along the west side of Otsego Lake will take you past the **Fenimore Art Museum**, which houses one of the country's most comprehensive and exceptional collections of American folk, fine and the renowned Thaw Collection of American Indian Art, representing North America's diverse and rich cultural heritage. Then stop and say hello to the farm animals at **The Farmers’ Museum** and catch live demonstrations with 18th Century docents sharing stories while they teach you of yesteryears’ ways. As you then pass the historic **Otesaga Resort Hotel**, you'll enter into the heart of Cooperstown where you can visit the legendary **National Baseball Hall of Fame and Museum**, as well as the many fine shops and eateries. **The Cooperstown Chamber of Commerce** on Chestnut Street can be of assistance finding local services and answer any questions about the area. Once you have enjoyed Cooperstown to your heart's desire, journey back to Route 20 via Route 31 up the eastern shore of Otsego Lake and stop at **Hyde Hall**, located within **Glimmerglass State Park**. Here too is the oldest wooden covered bridge in the country. As you leave the park, continue north, reuniting with Route 20 in **East Springfield**. Head east once again on Route 20, then turn onto Route 54 to visit historic Cherry Valley.

**L The Cherry Valley Turnpike Excursion.** Just east of East Springfield, bear right on County Route 54 to the Historic Village of Cherry Valley. Until a few decades ago, Route 20 ran through this historic community, and was the gateway to the American Frontier and an important link between the Mohawk and the other nations of the Iroquois Confederacy. Starting in 1799, the Cherry Valley Turnpike construction that linked the west to Albany brought prosperity to the village. Rich in history, this was the site of one of the most notorious events of the Revolutionary War, the Cherry Valley Massacre, making it a great location for connecting with spirits of the past. In 1837, Samuel F.B. Morse developed the first working telegraphic machine while visiting his cousin at his village home, now the site of **The Cherry Valley Bookstore**. Visit **The Cherry Valley Museum** to view a collection of women's clothing from the 1800s and pick up directions for the walking tour of Cherry Valley which resonates with history, early architecture and historic monuments. Cherry Valley offers a unique fine dining experience at **The Rose and Kettle restaurant**, or take a picnic to **Cherry Valley Lilacs**. Return to Route 20 via Main Street east to Route 54 east.



*Our newly updated campground is perfectly situated to explore the Cooperstown area, the Catskills, and beyond.*

Peacefully nestled between beautiful woodlands and open farmland, The Cooperstown Deer Run Campground is the right place for you to unwind, relax and make memories. Our campground is conveniently located a scenic nine-mile drive from Cooperstown at the Northern end of Otsego Lake and we're always moments away from adventure and fun.

**Book Your Vacation Today!**

**7761 State Highway 80, Springfield Center NY 13468**  
9.5 miles from baseball hall of fame • 1.7 miles from RT 20

**607-376-7167**

Email - [deerruncampground@gmail.com](mailto:deerruncampground@gmail.com) • [www.deerruncampgroundcooperstown.com](http://www.deerruncampgroundcooperstown.com)

## Cooperstown

**Bayside Inn & Marina - F3**  
Located on Otsego Lake, Bayside Inn & Marina offers pleasant, comfortable accommodations in a peaceful, wooded, lakeside setting. Enjoy the private beach, canoes, kayaks, picnic areas and gazebos. 7 miles from Cooperstown, 4 miles from Route 20.  
**7090 State Highway 80, Cooperstown • 607-547-2371 • [baysidecooperstown.com](http://baysidecooperstown.com)**

**Cooperstown Chamber of Commerce - F3**  
One of the nicest parts of the journey to Cooperstown is the beautiful countryside you will traverse to get here! We don't apologize for being off the beaten track, and we're sure you'll agree it's worth the trip. Be sure to stop in to our Visitor Information Center when you get here for up-to-date information on the many things to see and do in the Cooperstown area!  
**31 Chestnut Street, Cooperstown • 607-547-9983 • [cooperstownchamber.org](http://cooperstownchamber.org)**

**Cooperstown Farmers Market - F3**  
The Cooperstown Farmers' Market, open year-round on Saturdays, is a community gathering place featuring 30+ local farmers, makers and artisans. You'll find fresh seasonal produce, pasture-raised meats, farmstead cheese, prepared foods, baked goods, eggs, honey, maple syrup, flowers, spirits, wine and cider, artisan crafts, plants, home goods, gifts, and more. Live music on Saturdays May through December and on Summer Tuesdays. Saturday hours are 9am-2pm (May-Dec) and 10am-2pm (Jan-April). Also open Tuesdays 12pm-4pm (July-Sept.). The Cooperstown Farmers' Market, located close to Doubleday Field, is a program of Otsego 2000. **101 Main Street in Pioneer Alley, Cooperstown • 607-547-6195 • [market@otsego2000.org](mailto:market@otsego2000.org)**

**Hyde Hall State Historic Site - F2**  
Celebrating over 200 years of Hyde Hall, a 50 room Mansion overlooking Otsego Lake. Built 1817 – 1835. Open May to October. Guided tours on the hour 10:00 – 4:00. Events, Hauntings – July & August & Candlelight tours – October. **Glimmerglass State Park, Cooperstown, NY. • (607) 547-5098 • [HydeHall.org](http://HydeHall.org) for event details.**

**Ingalls Blueberry Hill - F3**  
U-pick blueberry farm 4 1/2 miles south of Cooperstown off Route 28. Look for signs. Picking begins end of July for 4-5 weeks. Certified organic high bush blueberries. Open mornings and evenings 5pm until dark. “One of the nicest blueberry fields in NY.” **136 Seminary Road, Cooperstown • 607-437-7910 • [www.ingallsblueberryhill.com](http://www.ingallsblueberryhill.com)**

**Sunflower Café - F3**  
Serving Breakfast and Lunch, Soup, Salads, Sandwiches, Café Specialties. **7629A St. Hwy 80, Cooperstown, NY 13326 • 315-985-8096 • [www.sunflowerspringfield.com](http://www.sunflowerspringfield.com)**

## Richfield Springs/ Schuyler Lake

**Richfield Springs Chamber of Commerce - F2**  
The historic Village of Richfield Springs, once known for its resorts and spas, sits atop pristine Canadarago Lake, just west of Cherry Valley, 14 miles north of Cooperstown, and only 15 miles south of the NYS Thruway. With our first-rate school system serving as the hub of our community, Richfield Springs' distinctive Victorian architecture, quaint surrounding Amish communities, Farmers' Market, summer concerts, craft shows, and antique car events give this charming village the feel of stepping through time to a simpler era. Welcome! **315-217-1485 • [richfieldspringschamber.org](http://richfieldspringschamber.org)**

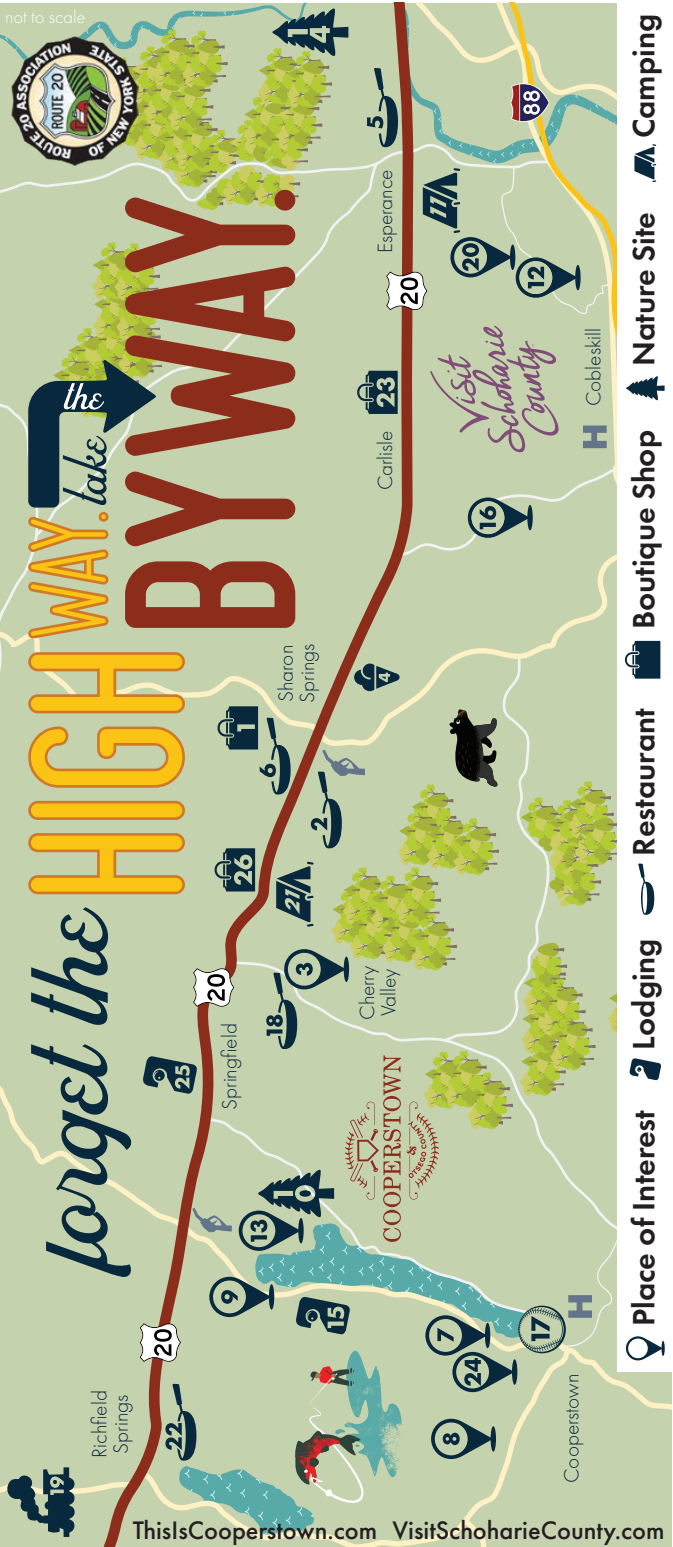
**Cooperstown KOA Journey Campground - F2**  
We've got you covered in the great outdoors. Enjoy long, level RV sites, deluxe cabins with everything you need included, heat pook, camp K9, lawn games and ac vi es. Just off US Highway 20, the award-winning Cooperstown KOA Journey is perfect for easy in/ easy out – even for 45' coaches. 20 minutes to the Baseball Hall of Fame, or 25 to the Dreams Park to watch your little leaguer shine, this KOA is a picturesque, pet-friendly place in the foothills of the Adirondacks. Visit local museums, opera, shops, wineries, cideries, and breweries. Pool open Memorial Day weekend – Labor Day weekend. **565 Ostrander Rd., Richfield Springs • 315-858-0236 • Email: [cooperstown@koa.com](mailto:cooperstown@koa.com) • [www.cooperstownkoa.com](http://www.cooperstownkoa.com)**

**Richfield Springs Railroad - F12**  
Sunset Rides, Nature Discovery Trains, Special Event Trains, Fall Foliage Trains, ColorGlo Christmas Trains, Train Museum. Adults - \$20; Children 3-12 - \$10; Children under 3 ride free! Limited Seats Available Reservations Recommended. **Parking & Check In: At the Newark Milk and Cream Company Building located at 168 Mc Koons Road, Richfield Springs, NY 13439**

**Cooperstown/Otsego County Tourism**  
Arriving in Otsego on Route 20, you'll find a place where culture meets with applause and world class opera, national art exhibitions, theater and concerts. Here, past meets present, from hands-on history museums to baseball games, historic sites and New York State's first cuisine trail. **20 Chestnut Street, Cooperstown • 607-322-4046 • [thisiscooperstown.com](http://thisiscooperstown.com)**

**James Jordan Associates, Architects - F2**  
Established in 1984, we are an architectural firm experienced in educational, commercial and institutional facilities. We have been involved in the evaluation and renovation of existing building and additions as well as new construction. We have completed hundreds of projects across New York State and offer a full array of architectural services, including specialized experience in asbestos, accessibility and roofing. **68 Main Street, Richfield Springs • 315-858-8000 • [jordanusa.com](http://jordanusa.com)**

not to scale



1	Beekman 1802 Mercantile	1 min
2	Brimstone Bakery	0 mins
3	Cherry Valley Lilacs	4 mins
4	Dairyland	0 mins
5	Dairy Carnival	0 mins
6	Fancy Farmer	0 mins
7	Fenimore Art Museum	14 mins
8	Fly Creek Cider Mill	19 mins
9	Glimmerglass Festival	4 mins
10	Glimmerglass State Park	7 mins
11	Hide-A-Way Campsites	6 mins
12	Howe Caverns	13 mins
13	Hyde Hall	9 mins
14	Landis Arboretum	4 mins
15	Lake 'N' Pines Motel	5 mins
16	Lavender Manor Farms	5 mins
17	National Baseball Hall of Fame & Museum	15 mins
18	Red Shed Ale House	3 mins
19	Richfield Springs Scenic Railway	3 mins
20	Secret Caverns	9 mins
21	Swary's Campground	1 min
22	Tally-Ho Restaurant	0 mins
23	The Bear Den	0 mins
24	The Farmers' Museum	14 mins
25	The Meadowlark Inn	0 mins
26	The Tepae	0 mins





**Support the Arts!**

Make the most of your trip to Cooperstown with visits to our galleries, featuring local and regional artists!

**The Cooperstown Art Association Galleries**

22 Main St. Cooperstown (607) 547-9777

Gallery Hours: Tuesday - Saturday 11-4pm

[www.cooperstownart.com](http://www.cooperstownart.com)

**The Smithy Gallery & Clay Studio**

55 Pioneer St. Cooperstown (607) 547-8671

Gallery Hours: Tuesday - Saturday 11-4pm

[www.smithyarts.org](http://www.smithyarts.org)



**A vintage Roadside Treasure, sure to be a surprising experience!**

7632 US Highway 20, Cherry Valley, NY  
607-264-3987 • [thetepee.biz](http://thetepee.biz)



**plaide palette**

Irish - Scottish - British - Tea - Food - Gifts  
Fair Trade and Metaphysical  
Crystals, Rocks, Incense


45 Main Street - Cherry Valley, NY  
**607-264-3769 • [www.celticart.com](http://www.celticart.com)**



**The Old Stone Fort MUSEUM**

Seven historic buildings at a  
Revolutionary War battle site.

145 Fort Rd. Schoharie, NY 12157  
[theOldStoneFort.org](http://theOldStoneFort.org) **518.295.7192**



**Serving Breakfast & Lunch**

Choose from a delicious variety of healthy options made fresh daily!  
We serve local produce, cheese and eggs.

- Visit our deli case for the hard to find cheeses!
- Take-out available!
- Now Serving Wine, Beer and Mimosas
- Happy Hour During Summertime • Online Ordering

**7629A St. Highway 80 • Cooperstown**  
**(315) 985-8096 • [www.sunflowerspringfield.com](http://www.sunflowerspringfield.com)**



Tell our members you saw them in the Route 20 Scenic Byway Guide!

**CR Custom Publishing - F2**  
All our publications have an emphasis on eye catching graphics, printing and format. Specializing in menus, rack cards, business cards, brochures, real estate and Visitor guide.  
**24 Elm Street Richfield Springs • 315-868-0126 • [www.crcustompublishing.com](http://www.crcustompublishing.com)**

**Parkview Liquors - F2**  
Parkview is a full service liquor store. Located in the center of Richfield Springs. With over 350 wines in stock and a complete selection of liquors, cordials and drink mixers. Wine tastings throughout the summer. Follow us on Facebook for dates and times. Open Mon-Thurs. 10am-7pm, Fri-Sat 10am-8pm, Sun 12pm-5pm. **144 Main Street, Richfield Springs, NY 13439, 315-858-0430.**

**Richfield Springs Community Food Cooperative - F2**  
Member owned: Cafe, Coworking Space, Local Food Market, Co-Kitchen. All are welcome to shop. **Main Street, Richfield Springs, NY 13439 • 315-858-7023. Email: [rscommunityfoods@gmail.com](mailto:rscommunityfoods@gmail.com) • [www.rscommunityfoods.org](http://www.rscommunityfoods.org)**

**Azure Arts - F2**  
An active community pottery studio offering classes and workshops. Personalized group and private classes are offered year round. Find more info and make a reservation on the website. Just ¼ mile off Route 20 **1149 Allen Lake Road/County Highway 27, Richfield Springs, NY • 315 858-8899 • email: [christina@azureartisans.com](mailto:christina@azureartisans.com) website: <https://azureartisans.com>**

*Springfield & E. Springfield-  
Cherry Valley/Roseboom*

**Town of Cherry Valley - G2**  
Located on "old" or original Route 20 (now County Rt. 54), Cherry Valley is a vibrant community of businesses and farms, history and the arts, with a purpose of preserving our place in history and conserving our natural and scenic resources. **607-264-9045 • [cherryvalleyny.us](http://cherryvalleyny.us)**

**The TePee - G3**  
Probably the most well known landmark and roadside attraction and gift shop along Route 20. Breathtaking 100 mile views of the Mohawk Valley and Adirondack Mountains. Part of Americana past. **7632 US Route 20, Cherry Valley • 607-264-3987 • [thetepee.biz](http://thetepee.biz)**

**Center Valley Guest House - G3**  
A 1500 sq ft home with a fully equipped kitchen; snacks, coffee, tea, seltzer, provided. Downstairs: parlor, living room, dining room & full bath. Outside deck with bbq grill. Two upstairs bedrooms, one with an en suite bathroom. It is a quiet, private and relaxing location. Nonsmokers only. No pets. \$110.00 a night (plus sales & occupancy tax) two night minimum. **1112 County Highway 50, Cherry Valley • 518-284-2370 • [www.centervalleystayhouse.com](http://www.centervalleystayhouse.com)**

**Plaide Palette of Celtic Art - G3**  
It's like Brigadoon! Importers of fine Irish, Scottish, and Welsh gifts. Specializing in British and Irish teas, musical instruments, Celtic jewelry, tea pots, custom wedding cake toppers, crystals, rocks, insense, fair trade and local products. Metaphysical and holistic jewelry plus witch balls, pendulums & custom made green men. Lots of new items, foods, and incense. **45 Main Street, Cherry Valley • 607-264-3769 • [celticart.com](http://celticart.com)**

**Cherry Valley Historical Association/ Museum - G3**  
Located in a Federal style house (ca. 1815) with exhibits from 1778 infamous Cherry Valley Massacre to late 20th-century. Collection of 1830's memorabilia, antique fire engines,period clothing collections, kitchen exhibit and other period rooms. Memorial Day-Oct 15, daily 10-5. **49 Main Street, Cherry Valley • [cherryvalleymuseum.com](http://cherryvalleymuseum.com) 607-264-3303 or 607-264-3098**

**Rose & Kettle Restaurant - G3**  
Fine dining in a 200 year old house in the center of Cherry Valley. Seasonal menus of American foods with a southern European influence and an emphasis on local ingredients.




**The Rose & Kettle**  
4 Lancaster Street, Cherry Valley, NY 13320  
607-264-3078  
Matthew Begley, Chef/Owner

Reservations recommended. **4 Lancaster Street, Cherry Valley • 607-264-3078 [theroseandkettle.com](http://theroseandkettle.com)**

**Roseboom Historical Association - G3**  
Located in the restored Baptist Church, the Historical Association is dedicated to the preservation of the history of the Town of Roseboom. Events such as lectures, art shows & performances. **State Highway 165, Roseboom • [roseboom.historical@gmail.com](mailto:roseboom.historical@gmail.com)**

*Sharon Springs/ Carlisle*

**Sharon Springs Chamber of Commerce - H3**  
WELCOME to the Sharon Springs Chamber of Commerce! Founded in 1930, the Chamber is a non-profit organization whose mission is to promote business, civic and economic growth in Sharon Springs,to enhance the quality of life of the individuals working and residing in the area. **189 Main Street, Sharon Springs • 518-284-2880 [sharonspringschamber.com](http://sharonspringschamber.com)**

**American Hotel - H3**  
Located on historic Main Street, offering lodging in a quiet, peaceful setting. Just a short drive from Cooperstown. **192 Main Street, Sharon Springs • 518-284-2105 [info@americanhotelnyny.com](mailto:info@americanhotelnyny.com) • [americanhotelnyny.com](http://americanhotelnyny.com)**

**Town of Sharon - H3**  
The Town of Sharon and Village of Sharon Springs are located on Historic Route 20. Much of the history is extraordinary because of the Mineral Springs in the Village. **129 Main Street, Sharon Springs • 518-284-3010 • [schohariecounty-ny.gov](http://schohariecounty-ny.gov)**  
**Rose and Kettle- H3**  
Located on historic Main Street, offering lodging in a quiet, peaceful setting. Just a short drive from Cooperstown. **192 Main Street, Sharon Springs • 518-284-2105 [info@americanhotelnyny.com](mailto:info@americanhotelnyny.com) • [americanhotelnyny.com](http://americanhotelnyny.com)**

*Cobleskill & Howes Cave*

**Howe Caverns - H3**  
Howe Caverns Adventure Park - high in the Air-Deep in the Earth-New York's coolest getaway! Explore the cave, Pan for Gems, Zip, Climb, Jump, Rock and Roll! Something for everyone! Cave Open Year Round with Seasonal Hours. Howe High Adventure Open Summer Season. **255 Discovery Drive, Howes Cavern • 518-296-8900 • [howescavern.com](http://howescavern.com)**

**Iroquois Museum - H3**  
We acknowledge that the Iroquois Museum is located in the ancestral lands of the Kanienkeha:ka (Mohawk People). We honor all Haudenosaunee through our educational exhibitions , events and activities. We value their connection to this valley and offer our respect to all Haudenosaunee people of the past and present. **324 Caverns Road, PO Box 7, City Howe Caves, NY 12092 • 518-296-8949 • [www.iroquoismuseum.org](http://www.iroquoismuseum.org)**

**Super 8 by Wyndham Cobleskill - H3**  
Your SUPER choice in Schoharie county. A family friendly, pet friendly hotel with clean comfortable rooms conveniently located near many great attractions. Free wireless. **955 East Main Street, Cobleskill • 518-234-4888 • [super8cobleskill@gmail.com](mailto:super8cobleskill@gmail.com)**

*Schoharie Valley*

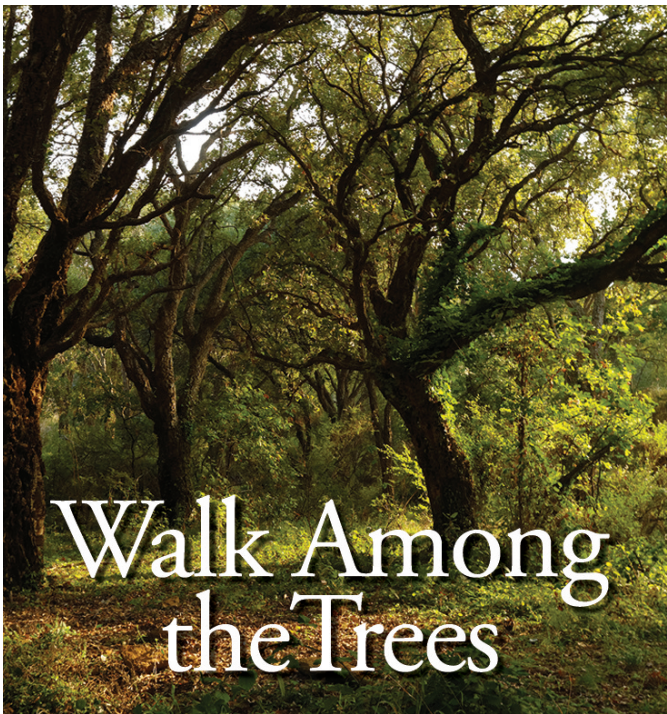
**Schoharie Valley Association**  
As you drive along Route 30 in the Schoharie Valley, amidst the beautiful scenery, you will be riding on the Timothy Murphy Trail, named after one of the American Revolution local heroes. The Valley abounds with farm stands, unique shops, places to dine and places to stay. **Schoharie Valley, Route 30, Schoharie • [schoharievalley.org](http://schoharievalley.org)**

**Barber's Farm - I4**  
So much more than just vegetables! Barber's Farm has been a family-owned farming operation for more than 150 years. Located in the heart of the beautiful Schoharie Valley, we offer greenhouse crops, hand harvested vegetables, and pick your own produce. We are also proud to be the home of Barbers Farm Distillery. Come and visit our farm stand and new Tasting Room to try the wonderful "1857 Potato Vodka" **3617 State Route 30., Middleburgh • 518-827-5454 • [barbersfarm.com](http://barbersfarm.com)**

**Old Stone Fort Museum Complex - I3**  
A 1772 church fortified and attacked in the Revolutionary War and a museum for over 120 years. See thousands of artifacts in six historic buildings. May-Oct. **145 Fort Road, Schoharie • 518-295-7192 • [theoldstonefort.org](http://theoldstonefort.org)**

**1743 Palatine House Museum - I3**  
Restored in 1971, the Palatine House is a medieval, German style construction built by Colonists for their minister, Peter Nicholas Sommers, who came to Schoharie County from Hamburg, Germany. Open weekends, Memorial Day through Columbus Day, 12-4pm. **Spring Street, Schoharie • 518-295-7505 • [SchoharieHeritage.org](http://SchoharieHeritage.org)**

**Schoharie Colonial Heritage Association - I3**  
A non-profit, volunteer organization dedicated to acquiring and preserving historical sites in and around the Village of Schoharie. Our main goal is to restore such sites and make



Miles of trails through plant collections  
and old growth forest. Birding,  
picnicking, classes, events, and more!



**174 Lape Road, Esperance, NY**  
**518-875-6935**

[facebook.com/LandisArb](https://facebook.com/LandisArb)  
[landisarboretum.org](http://landisarboretum.org)

them available to the public for educational and cultural enrichment. **143 Depot Lane, Schoharie • 518-295-7505 • [schany.org](http://schany.org)**

**Schoharie Valley Farms/Carrot Barn - I3**  
Our family welcomes you to the Schoharie Valley. Enjoy its broad fields and soaring cliffs, take part in its history, and bring home the best of it's abundance from Schoharie Valley Farms, offering produce, gifts, onsite cafe and greenhouses! **5605 State Route 30, Schoharie • 518-295-7139 • [schoharievalleyfarms.com](http://schoharievalleyfarms.com)**

**Schoharie Valley Railroad Museum - I3**  
Historic station house, freight/engine house, weigh station, creamery and old mill. Several rail cars on premises. Listed on the National Register of Historic places. Open weekends memorial Day through Columbus Day, 12 to 4pm. **143 Depot Lane, Schoharie 518-295-7505 • [schany.org](http://schany.org)**

*Esperance*

**Landis Arboretum - I3**  
Forty acres of the Arboretum are developed with planting trees, shrubs, and herbaceous perennials. A seasonal favorite of our visitors is the Van Loveland Perennial Garden at the old Farmhouse, The remainder of the property consists of natural areas, woodlands, open fields, wetlands, and more than 14 miles of trails. Horticultural features include a labeled collection of nearly all the trees, shrubs and vines native to New York State, as well as collections of notable trees, flowering ornamental trees and shrubs, conifers and oaks, and "tough trees for tough sites." **174 Lape Road, Esperance • 518-875-6935 • [landisarboretum.org](http://landisarboretum.org)**



# Schoharie County



As you re-enter Route 20 from Cherry Valley, turn east and almost immediately you'll see **The TePee**, a 65-year-old attraction and gift shop and an "original" to Route 20. Visitors to Schoharie County have long called it "picture-perfect," and for good reason. The view is up close to the rolling pastures and fields brimming with nature's bounty. Schoharie County is also known as "New York's Land of Caves" and is home to the largest cave in the Northeast, **Howe Caverns** and the equally interesting **Secret Caverns**, both in the hamlet of Howes Cave off Route 7.

**M Historic Sharon Springs.** A few miles east of the TePee is the village of Sharon Springs. Turn onto Route 10 north and travel down Main Street to the historic old section of this quaint village. In its prime, Sharon Springs catered to thousands of people who came for the healing powers of its mineral waters. Many quaint shops and unique eateries line Main Street as this village works to rebuild itself. A stop at the restored 1847 **American Hotel** will capture the uniqueness of this community, as will a stop at the **Beekman 1802 Mercantile**. What started out as a small goat soap boutique is now famous all over the world for the life-style creations of Dr. Brent Ridge and Josh Kilmer-Purcell. Sharon Springs can be explored while browsing antiques or visiting the **Sharon Historical Museum and Schoolhouse** that feature exhibits and dioramas of life in this village. Don't forget to look for the architectural walking tours as you enjoy your stroll on Main Street. Return to Route 20 and turn east and travel about 5 miles to the junction of Routes 20 and 145 south at Sharon Hill and Scenic Excursion L.

**N Cobleskill Loop.** Traveling south on Route 145 through productive farmland and horse farms, through the hamlet of Lawyersville to the **Village of Cobleskill**, settled in 1752 by grist mill owner Jacob Kobel. Cobleskill is the home of **SUNY Cobleskill College of Agriculture and Technology**, celebrating over 100 years since its charter by the New York State Legislature in 1911, this is one of the oldest institutions of its kind in New York State. Cobleskill is also home to the **Schoharie County Sunshine Fair** located on the original fairgrounds comprised of rare 19th century Victorian style buildings and located in the **Cobleskill Historic District**. Continue the journey on Route 7 east to the hamlet of Howes Cave, home of the **Iroquois Indian Museum**, world-renowned **Howe Caverns**, and the wonderful **Secret Caverns**. Continuing eastward on Route 7 you will pass through the hamlet of

Central Bridge, the birthplace of George Westinghouse, inventor of the railway air brake and largely responsible for the introduction of alternating current (AC) to the power industry. Travel to Route 30A south and resume your tour of the beautiful Schoharie Valley.

**O Visit the Valley.** As you travel south on Route 30A you will begin your travel in the historically and agriculturally rich Schoharie Valley, along the Schoharie Creek which flows north into the Mohawk River at Schoharie Crossing. In less than 5 miles, enter the hamlet of Central Bridge, and turn east on Route 7/30A south and continue Route 30A south.

At the junction of Route 30 (end of 30A) is the **Apple Barrel Store & Cafe**, a unique country shop filled with one-of-a-kind gifts and delicious meals. Route 30 is known as the Timothy Murphy Trail after a local folk hero credited with firing the shot that mortally wounded the English General Fraser in the Battle of Saratoga in 1777, thus depriving the English of leadership in that crucial battle. In fact, the Valley earned its nickname, "The Breadbasket of the American Revolution" when George Washington stationed troops here to protect one of the main sources of food for his army. Today, you will find farms of all shapes and sizes, raising everything from animals to asparagus to fruits and zucchini.

Continue Route 30 to **Schoharie Valley Farms**, where the Ball family works the rich soil and preserves the heritage of the valley. As you enter the village of Schoharie, look for the **Old Stone Fort Museum** – a 1772 stone church that was fortified and attacked by British forces in 1780 – that celebrates and preserves the rich, historic legacy of the Schoharie Valley. Continuing Route 30 south to the village of Middleburgh with more shops and eateries.

Route 30 south continues through the broad Schoharie Valley, past fruit and vegetable farms to the hamlet of North Blenheim, where the magnificent **Blenheim Covered Bridge** stands over the Schoharie Creek and the home of the **New York Power Authority**. On the NYPA grounds is the historic Lansing Manor and the NYPA Visitors Center where you can learn about energy, electricity, and the environment. A bit farther south on Route 30 is **Mine Kill State Park** and then Gilboa, a former village now submerged in the Schoharie Reservoir which supplies water to New York City. To see some of the oldest tree fossils in the world, turn east on Route 990V, cross the Schoharie Creek Bridge and the fossil exhibit is on the left, next to the Town Hall.

Return to Route 20 by traveling back north on Route 30 to the village of Schoharie. In Schoharie, travel east on County Route 18 to **Wellington's Herbs and Spices**. Soak in the scenery, sit by the ponds and enjoy the hospitality.

Return to Route 30 and continue north for about 10 miles to the junction of Route 20 just west of Esperance.

**P The Arboretum Excursion.** At the junction of Route 30 and Route 20, turn west on Route 20 for one mile, cross the Schoharie Creek and turn north on Charleston Street and follow signs two miles to **Landis Arboretum**. The Arboretum is a 548-acre public garden featuring plants, trees, old growth forests, hiking trails and educational activities. Plan to spend the day, maybe with a picnic lunch. Return to Route 20 and travel the Scenic Byway east to Schenectady County and the village of Delanson.



Tell our members you  
saw them in the Route 20  
Scenic Byway Guide!



## Locations

### Chenango County

5 N Main Street, New Berlin, NY 13411  
9 N. Main Street, Sherburne, NY 13460

### Delaware County

3 Lake Ave., Stamford, NY 12167

### Fulton County

4192 New York 30, Amsterdam, NY 12010  
192 S. Main Street, Northville, NY 12134  
99 N School Street, Mayfield, NY 12117  
1032 E. Fulton Street, Gloversville, NY 12078  
1 East Main Street, Johnstown, NY 12095  
201 North Comrie Ave., Johnstown, NY 12095  
198 North Comrie Ave., Johnstown, NY 12095  
1596 New York 29A, Gloversville, NY 12078  
76 S. Main Street, Gloversville, NY 12078

### Herkimer County

27 E. Clark Street, Ilion, NY 13357  
260 Mohawk Street, Herkimer, NY 13350  
200 E. Main Street, Frankfort, NY 13340  
22 N. Ann Street, Little Falls, NY 13365  
97 N. Main Street, Dolgeville, NY 13329

### Montgomery County

52 W. Main Street, St. Johnsville, NY 13452  
18 Willette Street, Fort Plain, NY 13339  
1 W. Grand Street, Palatine Bridge, NY 13428  
38 W. Main Street, Fonda, NY 12068  
17 E Main Street, Fort Johnson, NY 12070  
1 Venner Rd., Amsterdam, NY 12010  
151 Guy Park Ave., Amsterdam, NY 12010  
132 Market Street, Amsterdam, NY 12010  
185 East Main Street, Amsterdam 12010  
129 Pawling Street, Hagaman, NY 12086

### Oneida County

124 West Main Street, Waterville, NY 13480

### Otsego County

119 E Main Street, Richfield Springs, NY 13439  
105 Chestnut Street, Cooperstown, NY 13326  
7 Hollenbeck Rd., Worcester, NY 12197

### Saratoga County

2370 Route 67, Amsterdam, NY 12010

### Schoharie County

526 Highway Route 20, Sharon Springs, NY 13459  
319 Main Street, Schoharie, NY 12157  
288 Main Street, Middleburgh, NY 12122  
391 W. Main Street, Cobleskill, NY 12043  
2668 State Route 7, Cobleskill, NY 12043

### Schenectady County

5246 Amsterdam Rd., Scotia, NY 12302  
5060 Western Turnpike, Duanesburg, NY 12056  
4032 State Highway 30, Esperance, NY 12066



# Montgomery County

**Montgomery County** has so much to offer from our natural beauty to our abundant agriculture, to our deep rooted history. We are a county rich of history- from our Native American culture to Revolutionary War times, to the rise of the Erie Canal- all highlighted at our historic sites and museums.

Montgomery County, located in the Mohawk Valley, was home to many Native Americans, including **Saint Kateri Tekakwitha**, the first Native American Saint in the United States and Canada. Colonial times and our Revolutionary War heritage was a important era in our county and nation's history. Many of our attractions focus on these time periods including **Fort Klock, Fort Plain Museum, Old Fort Johnson, Walter Elwood Museum, Shrine of Our Lady of Martyrs, and the National Kateri Tekakwitha Shrine.**

Montgomery County is home to the Mohawk River and many community parks, set right on the river. Many host summer concert series with a variety of local, regional, and national musicians playing music in almost every genre.

Visit our peaceful countryside and our friendly communities to experience our abundance of agricultural businesses. Farm stands, farmers markets, agricultural tours, and farm-to-table dining can be found in Montgomery County. U-pick orchards, seasonal fruits and vegetables, specialty meats and goods, and so much more is available. Craft beverages from **Hummingbird Hills Winery** and **Eisenadler Brauhaus** feature NYS farm products.

While Route 20 does not run directly through Montgomery County, we are considered a "corridor community" due to our close proximity to the Scenic Byway Corridor. Montgomery County communities such as Amsterdam, Canajoharie, Fort Plain, Fonda, Nelliston, and St. Johnsville are all within a 10 to 20 minute ride from Route 20. A short trip that will be well worth the ride.

Montgomery County- Made of Something Stronger. For more information, please visit our website: [www.visitmontgomerycountyny.com](http://www.visitmontgomerycountyny.com)



**Q** The Otsquago Trail From Route 20 in Springfield Center (between Richfield Springs and Cherry Valley). Turn north on Route 80 and follow the ancient Otsquago Trail along the creek of the same name. It descends 1,100 feet over 17 miles to the Village of Fort Plain, NY on the Mohawk River. The Indian trail bridges the divide from the Susquehanna River Country to the Mohawk River system. It later became a road for Colonel Lewis Dubois's 5th Continental Regiment which was protecting General Clinton's right flank on the way to Otsego Lake in June of 1779 during the Revolutionary War.

The Indians referred to the creek as having "no father", probably because the source of the creek is an underground stream which makes it seemingly appear from nowhere. The creek follows a meandering path through Van Hornville, where Owen D. Young, founder of the Radio Corporation of America (RCA) was a lifelong resident, past farms, mill sites, country stores and antique shops. Continuing north the creek terminates at the Village of Fort Plain where the Revolutionary War fore by the same name was located. The fort served as the headquarters of Marinus Willett from 1781-83 and was visited by General Washington on his inspection tour of the valley in July and August of 1783.

Beginning around 1825, produce, grain and lumber was shipped along this route to warehouses in Fort Plain where it could be moved to markets along the Erie Canal. The Otsquago Creek is annually stocked with trout by the NYS Department of Environmental Conservation and has many hidden picturesque fishing spots. In Fort Plain follow Route 5S east for more sites (see Scenic Tour "G" -Herkimer County) Montgomery County Tourism: Montgomery County offers extensive and valuable collections of natural and cultural history via our museums and scenery. Discover a historical timeline spanning hundreds of years from Native American Culture to the Revolutionary War to the Erie Canal. **2430 Riverfront Center Amsterdam, 518-725-0641. [www.lloveny.com](http://www.lloveny.com).**



We welcome you to the picturesque villages of Canajoharie, Palatine Bridge, Fort Plain, and St. Johnsville in the heart of the Mohawk Valley. Located just 10 miles north of Route 20 — at the intersections of Routes 5 & 10, Routes 5 & 80, and at Exit 29 of the NYS Thruway — the following businesses are close and convenient.

## Attractions

**Arkell Museum at Canajoharie** – Featuring permanent and changing exhibitions of American art by Winslow Homer and more; Regional Art Galleries feature exhibitions of work by contemporary NYS artists; Gift Shop. Summer Hours: Tues-Fri 10-4; Sat & Sun Noon-4. **2 Erie Boulevard, Canajoharie • 518-673-2314 • [arkellmuseum.org](http://arkellmuseum.org)**

**Margaret Reaney Memorial Library & Museum** — Built in 1909, hosts genealogical information, collections of fine art and sculpture, Civil War artifacts, Erie Canal and Palatine German history, & more. **19 Kingsbury Ave., St. Johnsville, NY • 518-568-7822**

**Van Alstyne Homestead Society and Museum** — Houses early colonial artifacts, furnishings, and 19th century images of historic sites by Rufus Grider; and highlights the extraordinary history of the c. 1730 Van Alstyne house in Canajoharie, NY. Open every Saturday from Memorial Day Weekend to Labor Day Weekend from 1-4 p.m. Follow us on Facebook at <https://www.facebook.com/VanAlstyneHomestead> and Twitter, @VahsCanjo for more information. **PO BOX 372, 42 Moyer Street, Canajoharie, NY 13317**

## Retail

### Fort Plain Museum - G2

Preserving and interpreting the site of Revolutionary War Fort Plain/Fort Rensselaer. The museum houses both Revolutionary War era and Native American collections. Visitors can explore the fort's outdoor exhibits on a walking tour of the adjoining 20 acre hilltop park. **389 Canal Street, Fort Plain • 518-993-2527 • [fortplainmuseum.com](http://fortplainmuseum.com)**

## Margaret Reaney Memorial Library & Museum

19 Kingsbury Avenue, St. Johnsville, NY 13452 • 518-568-7822  
Margaretreaneylibrary.blogspot.com

- Original art work including oil paintings and bronze sculptures
  - Exhibits dedicated to the Erie Canal, Civil War, Palatine Germans, Antique Farm and Carpentry Tools
  - Robert M. Hartley Collection, military buttons, powder horn sketches and archeological artifacts
  - Extensive Genealogy and Local History reference collection
- .....  
**Hours:** Monday 9:30 AM – 7:00 PM  
Tuesday, Wednesday & Friday 9:30 AM – 4:30 PM  
Saturday 9:30 AM – NOON • Closed Thursday & Sunday  
Tours available by chance or appointment



## Mohawk Valley Regional Visitor Center - H2

The RVC in downtown Canajoharie is close to the Barge Canal, Erie Canalway bike trail and I-90. Volunteer-driven and handicapped accessible, it offers tourist information about Montgomery County area attractions and accommodations, maps, travel apps, and free wifi. **89 Church St, Canajoharie • Call 518-673-4711 • [mohawkvalleycollective.com](http://mohawkvalleycollective.com)**



Tell our members you saw them in the Route 20 Scenic Byway Guide!

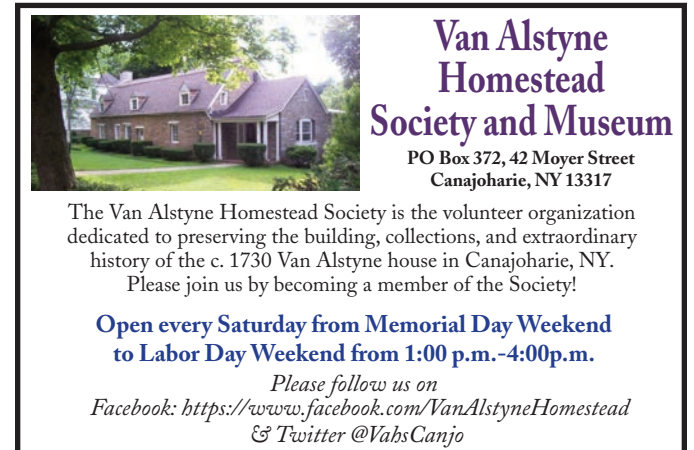


**BACK BARN BREWING COMPANY**

**Taproom and Biergarten Open!**

**HOURS**  
Thursday 4:00-8:00  
Friday 3:00-9:00  
Saturday 1:00-9:00  
Sunday 1:00-6:00

7082 Western Turnpike, Delanson NY 12053  
(518) 709-8423  
[www.backbarnbrewing.com](http://www.backbarnbrewing.com)



**Van Alstyne Homestead Society and Museum**

PO Box 372, 42 Moyer Street  
Canajoharie, NY 13317

The Van Alstyne Homestead Society is the volunteer organization dedicated to preserving the building, collections, and extraordinary history of the c. 1730 Van Alstyne house in Canajoharie, NY. Please join us by becoming a member of the Society!

**Open every Saturday from Memorial Day Weekend to Labor Day Weekend from 1:00 p.m.-4:00p.m.**

Please follow us on  
Facebook: <https://www.facebook.com/VanAlstyneHomestead>  
& Twitter @VahsCanjo



**Arkell Museum at Canajoharie**

American Art & Mohawk Valley History

[arkellmuseum.org](http://arkellmuseum.org) • 518.673.2314 • Thruway exit 29



# Roadside Markers Highlight Our Rich History . . .

One of the outreach programs the Route 20 Association is establishing roadside markers to highlight some of the unique history of the Route 20 Scenic Byway corridor. This is being accomplished through the William G. Pomeroy Foundation, Syracuse, with their generous grant program. Their markers can be found throughout the northeast. The Rt. 20 markers are being done in partnership with municipalities, historical societies, town historians and the Pomeroy Foundation. The following are commemorated in this program along with a little back story of their significance.



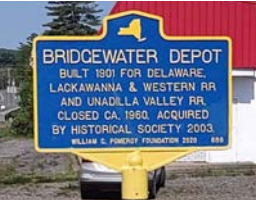
**Hulbert Birthplace, Burlington Flats.** William Hulbert was born in 1832 in Burlington Flats. At a young age, his family moved to Chicago where he would become successful and eventually owner of the White Stockings baseball Club (now the Cubs). In the mid 1870s, he would lead a group of fellow team owners in establishing baseball’s National League. In 1995 he was elected to the Baseball Hall of Fame, located in Cooperstown, not far from his original birthplace. His marker is located on NYS Rt. 51 on the Burlington Flats village green.



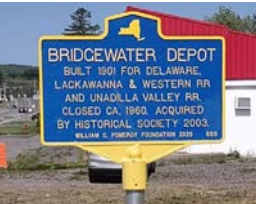
**Adam Helmer’s Run, Richfield Springs.** Adam Helmer was a part of a small party of scouts attacked by the warriors and Tories under Chief Joseph Brant near South Edmeston in 1777. He escaped and began a winding trek that took him to Canadarago Lake on the way north to Fort Dayton near Herkimer, warning settlers along the way of the impending attack. He was credited with saving over 200 settlers. This marker is located on Rt. 20 in Spring Park. It’s part of the Legends & Lore series developed by the Pomeroy Foundation with the New York Folklore Society and placed where it is thought he would have crossed what is now Rt. 20.



**Everett Holmes, Bridgewater.** Everett Holmes was born in nearby Unadilla Forks in 1908, son of a former slave. He would move to Bridgewater and in 1974 became mayor of the Village of Bridgewater, one the state’s first black mayors. His marker is located on Rt. 20 in front of the former train station that is now home to the Bridgewater Historical Society.



**Bridgewater Depot, Bridgewater.** This union station was built c.1901 and remains virtually intact from the days it served both the Lackawanna and Unadilla Valley Railroads. The Lackawanna’s route brought it south from Utica and east to Richfield Springs. The Unadilla Valley RR was a north-south route serving the small towns from Bridgewater to Sydney and established primarily as a means to help carry dairy products to New York City. This marker is located next to the Everett Holmes marker in front of the station on Rt. 20 on the east end of the former village. The station is also on the National Register of Historic Places.



**Western Star Masonic Lodge, Bridgewater.** This Lodge was established in 1797, making it one of the oldest Lodges in upstate New York still active. Among its petitioners were the Governor of New York and a signer of the Declaration of Independence. The marker is located at the corner of Route 20 and NYS Rt. 8 next to the building constructed around 1816 and relocated to this spot around 1860.



**Nine Mile Swamp, Sangerfield.** Nine Mile Swamp (or The Great Swamp) was part of the original land purchase of George Washington Loomis in the early 1800s. The Loomis gang would gain notoriety for their outlaw ways, reputedly using the vast swamp as a hideout for stolen livestock and other goods. The Legends & Lore marker is located on Route 20 around a mile west of the intersection of Routes 20 and NYS Rt. 12.

Some other markers include:



**Memorial Park, West Winfield.** This town park was established in 1920 as a memorial to all those who served in “The Great War” (WWI).

**Early Turnpike,** located at popular tourist destination, The Tepee, on Rt. 20, Cherry Valley. This tells the story of road that would become the Route 20 Scenic Byway.

**Birth of Village, West Winfield.** This marker traces the actual birth of the village growing from the intersection of the Utica-Burlington Plank Road and the Great Western Turnpike (Rt. 20).

**Mott Cider Mill, Bouckville.** How many know the famous Mott apple products brand got its start in Bouckville?

**The Summits, Bouckville,** to be erected this year. This local baseball team was established in the 1860s and was active until the 1930s. One time members “Hooks” Wiltse and “Snake” Wiltse would star in the major leagues in the early 1900s.

# Schenectady County

**A little history.** Entering Schenectady County from the west on Route 20, the first short excursion is to the village of **Delanson Historic District** via Route 395 south. The Village of Delanson was settled in 1861 when construction of the Albany & Susquehanna Railroad started. The district includes distinctive examples of a variety of popular Victorian period architectural styles including Italianate, Carpenter Gothic and Queen Anne. Return to Route 20 and continue east.

In about one mile **Christ Episcopal Church** is on the left (north) side of Route 20. The church is located in center square of the original Village of Duanesburg. Built by James Duane in 1762, it is the oldest, unaltered Episcopal Church in New York State.

**A little nature.** Just before the church, turn north onto Duanesburg Churches Road. Travel 2.5 miles then turn east onto Lake Road (County Route 88) for 0.7 miles to the entrance to the Schenectady County Forest Preserve on the left. **The Schenectady County Forest Preserve** is a 102-acre forest where the public can hike, hunt (November 15-December 15), fish, cross-country ski and snowshoe. This preserve is historically significant as one of James Duane’s original Great Lots where remains of stonewalls, a farm house foundation and a small family cemetery can be found. From the forest preserve, continue east on Lake Road. In about one-half mile, you’ll find the beginning of **Featherstonhaugh State Forest**, named after George W. Featherstonhaugh. Featherstonhaugh practiced scientific farming, crop rotation and served as the United States’ first geologist and agricultural commissioner. He is also considered the father of the steam railroad. Trail heads exist on either side of Lake Road but we recommend you travel 2 miles to the end of the forest and turn left on Judith Lane to the parking area and trail head. Walk from the parking area to the lake that you can explore by your own canoe or kayak. Watch for the Great Blue and Green Herons. In the fall, enjoy the sight of migrating waterfowl. Retrace your steps by traveling back west on Lake Road to Duanesburg Churches Road and turn south to Route 20.

Travel east on Route 20 to the Town of **Duanesburg**, the westernmost town in Schenectady County. The town is named James Duane. He was a member of the first Provincial Congress of 1774 and was associated with Patrick Henry, John Adams and other Revolutionary leaders. He died suddenly in 1797 and is buried under Christ’s Church in the town that bears his name. (While in Duanesburg, look, up in the sky! You might just catch a glimpse of skydivers from the Duanesburg Skydiving Club, located at the intersection of Routes 20 and 7. And, yes, you can give it a try – by appointment.) Travel though Duanesburg on Route 20 to the junction of I-88 and the easternmost terminus of the Route 20 NY Scenic Byway. But wait, there is more...

**Chamber of Schenectady County - J2**  
A full service Chamber of Commerce offering business, relocation, education and program services. Get a full list of businesses and local events at the Chamber website.  
**306 State Street, Schenectady • 518-372-5656 • schenectadychamber.org**



**A little more history.** For a final history tour, we recommend starting at the **North Mansion and Tenant House** (558 North Mansion Road, south off Route 20 just east of Duanesburg) the first manor house of the Duane Family. Visitors included Baron von Steuben. Continue on North Mansion Road and turn right (west) onto **Duane Lake Pond Road**. While all lake property is privately owned, the view is breathtaking. Follow Duane Lake Pond Road around to rejoin North Mansion Road to head back to Route 20. Turn west onto Route 20. In about 0.1 mile, turn south onto Featherstonhaugh Road. At the end of the road, you’ll find **Duane Mansion**, now a private home, with Federal-style barns on the property that are rare survivors in New York State. Return to Route 20. We hope you enjoy your visit.

**Back Barn Brewing Company - J2**  
Back Barn Brewing Company, a NYS Farm Brewery, is located on the historic US Route 20 in beautiful upstate New York State. Taproom on-site in renovated barns, outdoor patio space and biergarten; offering To-Go, playground, pet-friendly atmosphere. Back Barn Brewing Company, located on the historic Western Turnpike (US 20) in beautifully restored barns, embraces the farming heritage of the area delivering an experience worthy of its surroundings. We offer core and rotating seasonal beer selections, along with our own cider on tap and NYS wines. Come for the delicious, classic-style brews and stay for the great atmosphere and stunning views! **7082 Western Turnpike, Delanson, NY, www.backbarnbrewing.com**



The Route 20 Association of New York State, Inc. is a not for profit 501(c)(3) all volunteer organization serving as “Stewards of the Route 20 Scenic Byway.” As a not for profit the Association sustains itself from membership and advertising fees, business sponsorships and membership from individuals interested in protecting the heritage of historic US Route 20. Please consider joining us.

**To join or donate,** visit [nyroute20.com](http://nyroute20.com) and click on the **APPLICATION** or **DONATE** button. To sign up for our e-newsletter, visit the website and click on the **CONTACT US** button.

We would always appreciate a ‘Like’ on Facebook at NYS Route 20 Scenic Byway

Thank you for your support of our members and sponsors, and our efforts to enhance the Route 20 Scenic Byway.

Route 20 Association of New York State • PO Box 20, Richfield Springs, NY 13439 • [nyroute20.com](http://nyroute20.com)



**We gratefully acknowledge  
our 2023 sponsors:**



*An employee and family owned business  
of 337 convenience shops  
in Upstate New York and Vermont.*



**Route 20 Association of New York State  
PO Box 20, Richfield Springs, NY 13439  
[nyroute20.com](http://nyroute20.com)**

Information for this map and guide has been compiled from a number of reliable sources. While we strive for complete accuracy, we can not guarantee it. If you would like to make any corrections or additions, go to [www.nyroute20.com](http://www.nyroute20.com) or write to us at the address above. Any errors or omissions will be verified and corrected in the next edition. © 2021, Route 20 Association of NYS.

# **ROUTE 20 SCENIC BYWAY MAP AND GUIDE**

**Summer/Fall 2023 Edition**



***One of  
America's  
most historic,  
bountiful and scenic  
roadways***



**I ♥ NY**



**Produced by the  
Route 20 Association of New York State  
[www.nyroute20.com](http://www.nyroute20.com)**

