



The past. This highway began as Native American trails in the early years of America. During our nation's first century, these trails were transformed with the construction of

several turnpikes to handle the burgeoning westward traffic by horse and wagon.

The most famous of the turnpikes connected Albany to Cherry Valley and later was extended to Cazenovia and the Syracuse area. This roadway became known as the Cherry Valley Turnpike and soon was dotted with taverns, hotels and other amenities for travelers. In the 1860s, the Cherry Valley Turnpike became the property of New York State. State and federal programs began providing funds for road building and management assistance shortly after the turn of the century.

With the coming of the automobile, the highway had once again taken on a new life. In 1926, the road was designated as U.S. Route 20, the longest road in the country, running coast to coast a distance of 3,365 miles.

Roadside attractions and tourist cabins provided entertainment and much-needed services to a whole new kind of traveler. One can literally track the westward migration of the state and the nation in the buildings and the landscapes found along Route 20.



The present. The quiet neighborhoods and Main Streets of Route 20's historic villages showcase Federal and Greek Revival architectural styles of the Colonial/Turnpike era, a testament the long history of the region. Along Route 20, travelers pass New World Dutch, English, and gambrel-roof dairy barns, the numerous drive-ins and motor courts of the 1930s-1950s, all against the backdrop of the productive fields and tranquil pastures that first brought prosperity to the region.

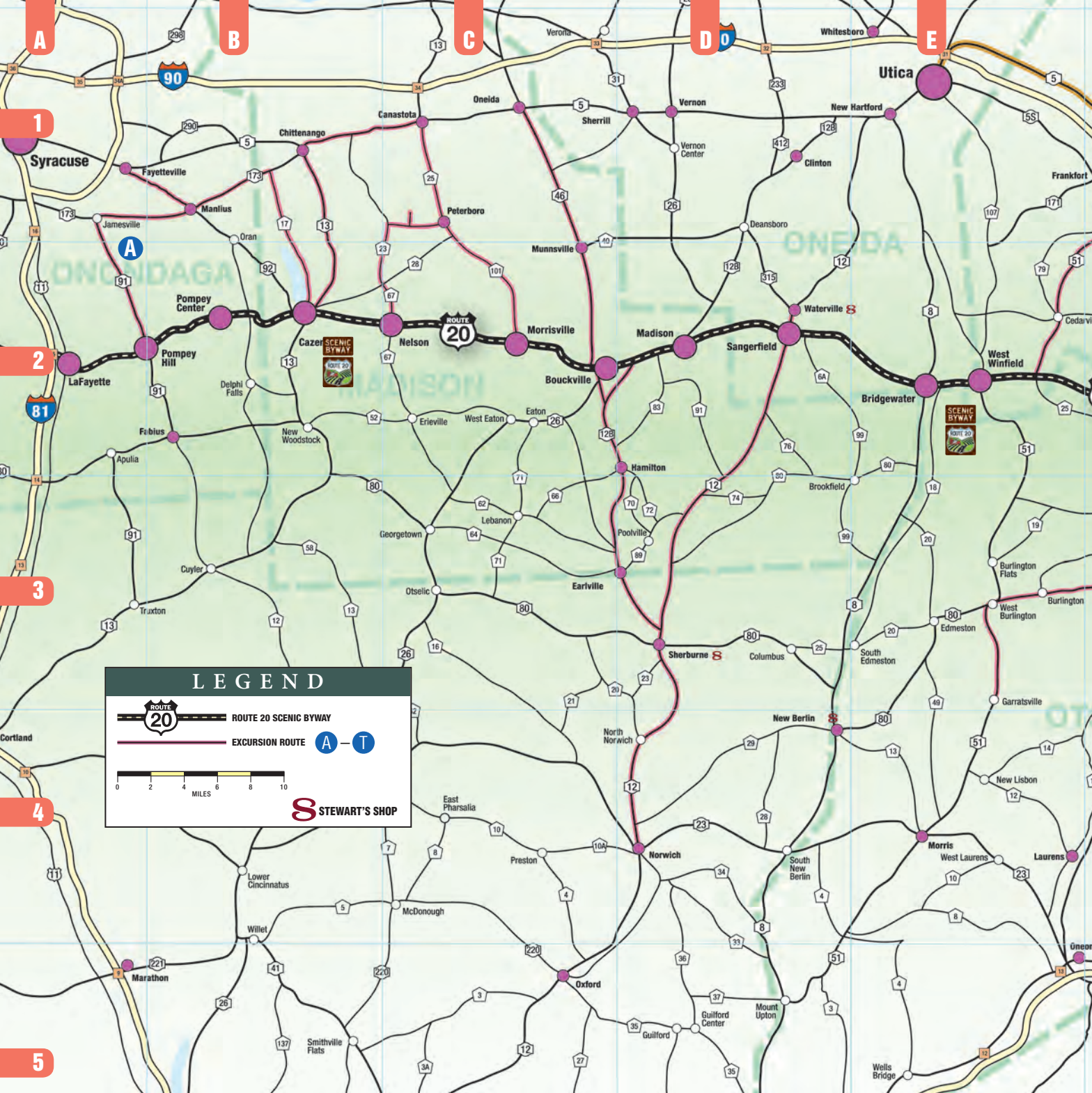
The journey. So let's get started: take a look inside to discover the 108 miles of Route 20 designated as a New York State Scenic Byway. Throughout the

area we have excursion routes from Route 20 to numerous points of interest in our nine-county region. (Excursion routes are designated in blue on the Scenic Byway Map as you turn this page.) While the excursions are set up for those driving west to east, we've included complete route numbers in each of the excursion descriptions to allow east-to-west drivers to "reverse" the trip easily. Either way, the journey will

be as much fun as the destination. Traveling along Route 20 may add a few minutes to your trip but, for a while, it probably won't seem like the world is racing by quite so fast. Welcome back to "*America's Main Street.*"

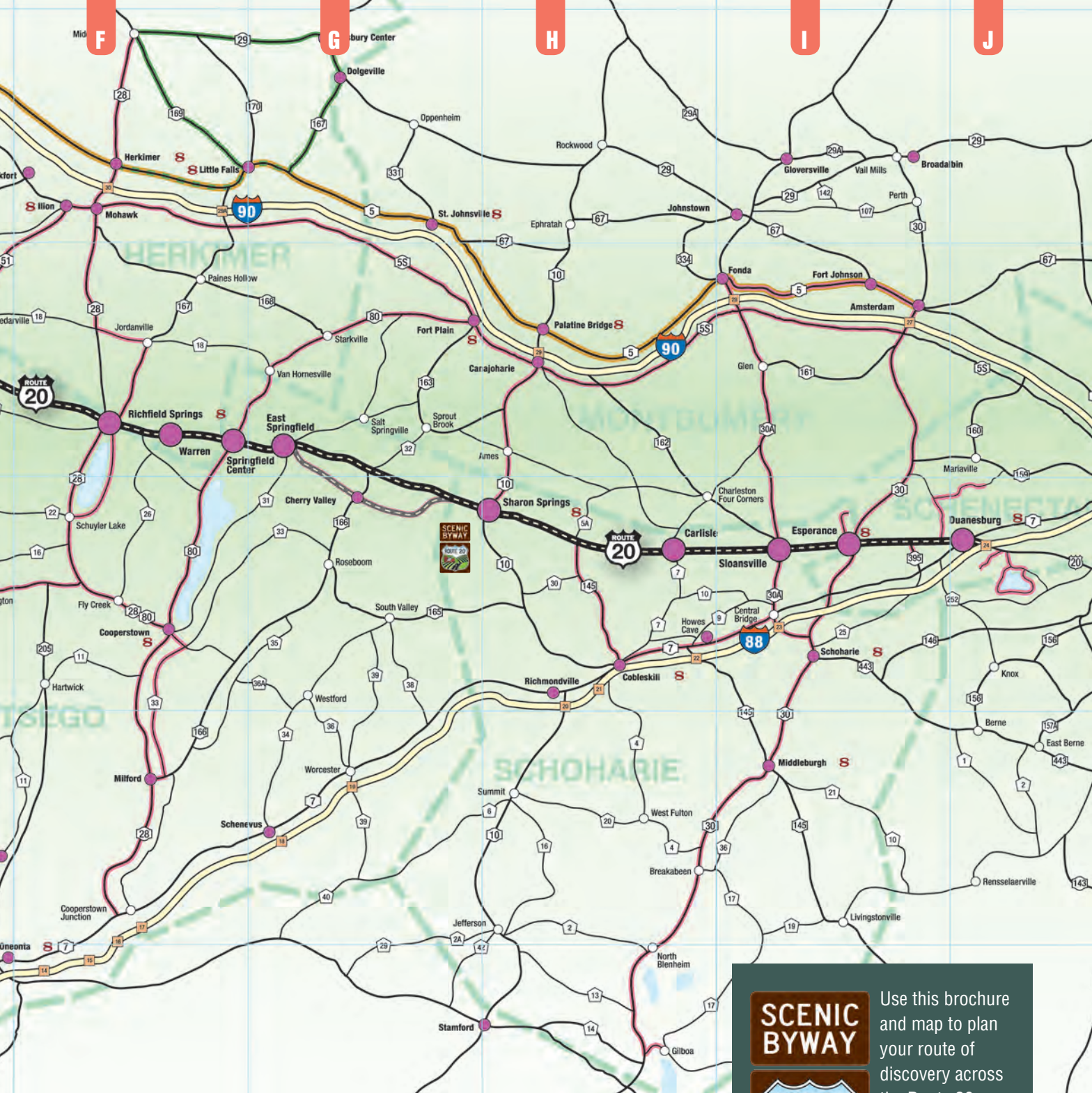


Route 20 Association of New York State
nyroute20.com



Route 20. The road

Part of the mission of the Route 20 Association is to work to protect, preserve, interpret and promote the assets of the 108 miles of the Route 20 Scenic Byway and within the 6,500 square miles of the Scenic Byway Corridor. With open land, historic communities, unique architecture and beautiful views bring such significant assets, our work is centered on increasing the awareness and sustainability of the wonderful communities



ad across America

and unique businesses throughout one of the most scenic areas and along one of the most historic drives in New York State.

We are thankful for the support of our members and particularly grateful to the many businesses that sponsor our efforts. We encourage you to support our members and sponsors in every way you can.

SCENIC BYWAY



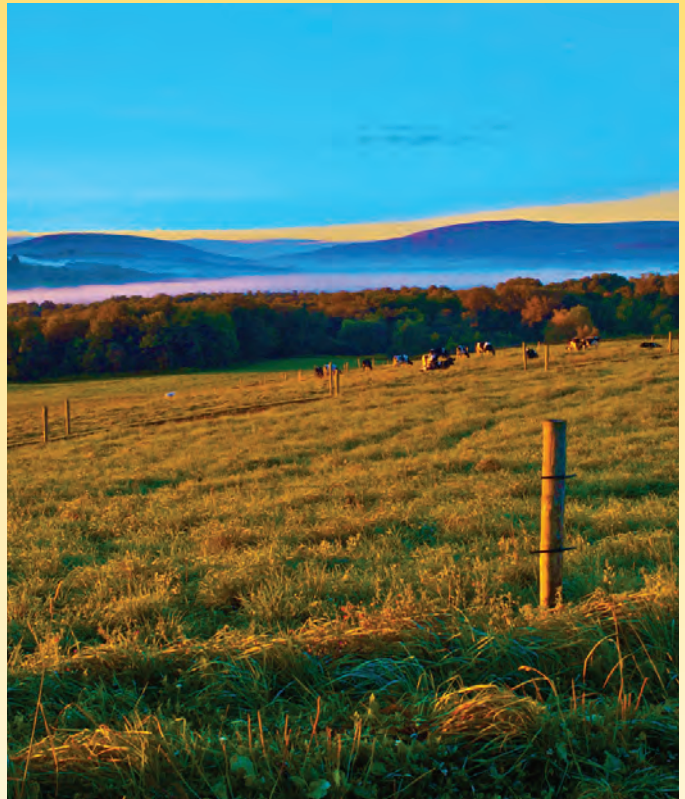
Use this brochure and map to plan your route of discovery across the Route 20 Scenic Byway. Descriptions of many Scenic Excursions are

included throughout this brochure. Visit www.nyroute20.com for information on hundreds of destinations, dining and lodging establishments, events and more. You can even do a geographic search to see what's nearby, wherever you are in the Route 20 Scenic Byway corridor.

Onondaga County

The communities in Onondaga County are the westernmost points on New York's Route 20 Scenic Byway. The county's name is derived from the name of the Native American people who live in the area. Today, the Onondaga Nation of the Iroquois Federation has a self-governed reservation of about nine square miles within the county. Through this area, US Route 20 traverses dramatic hill-and-valley terrain and the southern part of the county is Appalachian Plateau. **Pompey** is the highest inhabited spot in the county. Within the community is **Pratt's Falls Park**. The park has scenic trails leading to a 137-foot waterfall. This geological wonder was formed by retreating glaciers and was the site of the county's first mill operation in 1796. Next is the town of **LaFayette**. In October, the focus is the **LaFayette Apple Festival** with entertainment, crafts, a scarecrow contest and lots of newly harvested apples. Within LaFayette lies the tiny hamlet of Cardiff. It was the site of the William C. "Stub" Newell farm where the Cardiff Giant – a famous hoax – was discovered in 1869. The "giant" currently resides at The Farmers' Museum in Cooperstown.

A **The Furniture Trail.** Onondaga County is steeped in a history of excellent manufacturers. One of the most widely known artists/manufacturers is Gustav Stickley, the founder of **Stickley Furniture**. Just minutes north of Pompey Center from Route 20 on Pompey Center Road to Route 92 north is **Stickley's Manlius Factory**. Tours of the factory are offered every Tuesday at 10 am, and private tours can be arranged. Or you can journey a little farther north on Route 257 to the **Stickley Museum**, located on the second floor of the original L. & J.G. Stickley Factory at 300 Orchard Street in Fayetteville -- above the Fayetteville Free Library. The museum is a repository for more than a century of furniture making, items that stretch from Gustav Stickley's earliest Arts & Crafts furniture to freshly cut and finished products from the factory floor. From Manlius, travel east on Route 173 (Seneca Turnpike) about 8 miles to Route 17 south and East Lake Road along the east shore of beautiful Cazenovia Lake to the Village of Cazenovia and Route 20.



Something completely different. While you're in the area on a Sunday, check out **Kellish Farm Rolling Hills of Bluegrass Americana**, one-half mile north of Route 20 on Pompey Center Road. Every Sunday afternoon there are old-time music jams. Just stomp your feet or play, sing or dance. Another not-to-be-missed destination is **Beak and Skiff Apple Farms**. In addition to apples, they feature a winery and distillery, just six miles west of LaFayette on Route 20.

LaFayette/ Cortland/ Pompey

Beak and Skiff 1911 Tasting Room at Apple Hill - A2

Enjoy hand crafted hard ciders and small batch premium spirits in our tasting room. While you are here enjoy lunch in our cafe and the spectacular views of the surrounding orchard. **2708 Lords Hill Road (Route 80), LaFayette • 315-696-6085 or 315-677-5105 • beakandskiff.com**

Beak and Skiff Apple Orchards Apple Hill Campus - A2

Our 100 year old family orchard is a great place to take in the beautiful hills and valleys of Central New York. The general store, bakery and pick your own apples are sure to tempt your taste buds. **2708 Lords Hill Road (Route 80), LaFayette • 315-696-6085 or 315-677-5105 • beakandskiff.com**

Pied Piper Maple Products - A1

Maple Season is year around at Pied Piper Maple, we welcome visitors to tour our facilities and learn about how we make maple products. We are proud to make our Organic maple syrup, granulated maple syrup and molded maple sugar using method that is environmentally friendly. **1335 West Valley Road, Preble, NY • 315-636-8569 315-345-5374**

Town of Pompey - A2

Established in 1794, Pompey is made up of mostly rural agricultural land with beautiful rolling hills and spectacular vistas. The first academy of Onondaga County was at Pompey Hill. **Scenic Pratt's Falls, a 137 foot waterfall is located in the town. 8354 US Route 20, Pompey • 315-682-9877 • pompey-ny.gov**

Town of Pompey Historical Society - A2

"Founded in 1976". The Town of Pompey Historical Society is located on Route 20 and the Pompey Center Road. Its mission is to collect, preserve and disseminate its history with exhibits, publications and programs, research and genealogy. **8347 US Route 20, Manlius • 315-682-4729 • pompeyhistorical.org**



www.nyroute20.com

SCENIC
BYWAY



108 Miles
of Discovery
LaFayette
to
Duanesburg





No matter the time of year, whether it's enjoying the views, apple picking, savoring our bakery treats or shopping in our general store there is always something to do.



1911 TASTING ROOM

1911[®]

ESTABLISHED

premium small batch spirits & hard ciders

Come sit, sample and shop while drinking in the view of our surrounding orchards. It's beautiful any time of year.



2708 Lords Hill Rd • Lafayette, NY
beakandskiff.com | 1911Established.com

THE FLAVORS OF CNY fresh CENTRAL NEW YORK

Hi. I'm Stan.

My sweet honey creates quite a buzz around here. Guess it's a product that really sticks with you. Get a taste at farms and markets throughout Central New York. When it comes to treats, this is where you want to "bee".



Get to know the best in fresh.
Visit CNYFresh.com.

I ♥ NY[®]
iloveny.com

Madison County



Madison County is home to quaint villages and rural communities full of heritage. Along Route 20, you'll find Cazenovia on beautiful **Cazenovia Lake** and home to **Cazenovia College**, many fine shops, restaurants and historic inns as well as the **Lorenzo State Historic Site** where you can experience life on a rural estate or attend any number of free events on the historic grounds. Fresh farm traditions abound at the many farm markets including **Critz Farms** just a few miles south of Cazenovia or **Nelson Farms**, home to a wealth of made-in-New York food products manufactured on site or from local producers. **Peterboro** played an important role in the Underground Railroad and Abolition movements. **Morrisville** is home to **Morrisville State College**, a hi-tech college with over 80 degree programs. **Hamilton** provides a unique blend of shopping, dining, arts and education and is home to the **Palace Theater** and **Colgate University**. **Madison-Bouckville** offer a year-round antique venue with more than 30 dealers dedicated to antiques. Once a year in August, the Madison-Bouckville Antique Week draws more than 2,000 dealers for a week long show along one two-mile stretch of Route 20 for the largest antique show in New York State. A must while visiting **Madison Bouckville** is a meal at the historic **Hotel Solsville** or **Ye Olde Landmark Tavern**. Plan to spend days and nights in Madison County.

B The Yellow Brick Road and the Erie Canal. From Cazenovia, follow Route 13 north to **Chittenango**. Route 13 nearly parallels the route of the once thriving Lehigh Valley Railroad. Just after entering Route 13 north, at Williams Street on the left is the **Historic Lehigh Valley Depot and Caboose**, now the home of Gene Gissin Photography. Along the way, stop to see a picturesque 167-foot waterfall, the main attraction of **Chittenango Falls State Park**. In the Village of Chittenango, you'll find the yellow brick road – now a sidewalk – the inspiration for native son L. Frank Baum who wrote *The Wonderful Wizard of Oz*. Chittenango celebrates all things Oz during their annual **Oz-Stravaganza**, the first weekend of June. While in Chittenango be sure to visit the Award of Excellence winning **Chittenango Landing Canal Boat Museum**. Return to Route 20, or continue a few miles east on Route 5 from Chittenango to the **Village of Canastota**, an

Madison County Tourism - C2

Take a road trip through Madison County. Explore the antique district of Bouckville, enjoy farm to table fare in Hamilton and Cazenovia and unwind in one of the many cozy country inns you'll find along the way. **800-684-7320**

• madisontourism.com

Greater Cazenovia Area Chamber of Commerce - B2

The Greater Cazenovia Area Chamber of Commerce is committed to the active development of commerce and investment in the greater Cazenovia area and to serving the common needs of businesses operating in the area, with a particular emphasis on small businesses. **59 Albany Street, Cazenovia • 315-655-9243 • cazenoviachamber.com**

Erie Canal Community. The **Canal Town Museum** is located across the street from the Canal. Canastota also is home of the **International Boxing Hall of Fame**. Continue back to Route 20 on S. Peterboro Street/Oxbow Road (Route 25) to Peterboro, a stop on the Underground Railroad and home of the **Abolitionist Hall of Fame** and the **Gerrit Smith Estate National Historic Landmark**, then on to Morrisville, home of Morrisville State College and a great equestrian center.

C The Land of Windmills. You will find 20 wind turbines nestled among dairy farms on a hilltop in Madison County and the **FREE Center**, a place to view kiosks on renewable energy, a windmill blade and even to have a picnic. Just west from Morrisville on Route 20 is the community of Nelson. While in Nelson, see the **Nelson Odeon**, a former Grange Hall restored and now used as a performance venue and then stop at **Nelson Farms** for some locally New York State produced products and learn about the entrepreneurial opportunities they provide for the agri-business community. Then, from Nelson, head north on County Route 67 which turns into County Route 23 after about 3 miles. Follow for another 2.5 miles and turn east onto Larkin Road. Turn north onto Bellinger Road, crossing Peterboro Road to the **Fenner Renewable Energy Education Center**. From the FREE Center, continue east on Peterboro Road to Oxbow Road (Route 25) and then south on Oxbow Road to historic Peterboro (see Scenic Excursion B).

D Hop Culture and Utopian Silver. Just west of Bouckville, take Route 46 north to **Foothill Hops** and a visit to their shop. Continue on Route 46 north to Oneida and the Madison County Historical Society at 435 Main Street. Visit the exhibit, Bittersweet: The Story of Hop Culture in Central New York, for an introduction to the **Hop Heritage Trail** which marks hop kilns and other hop sites still in existence. The museum also hosts a Hop Festival in September. Be sure to visit the **Oneida Community Mansion House**, a Utopian commune of the 19th century, considered to be the most successful commune in American history. The members learned to make silver knives, forks and spoons, the beginning of what has grown to become Oneida Silversmiths and the Oneida Ltd. of today. There are eight guest rooms for those who wish to stay overnight at the Mansion. Return to Route 20 on Route 46 and continue south on Route 46 for your next adventure.

E Classic Cars. Just west of Bouckville, from Route 20, travel south on Route 46 (turns into Route 12B) to Hamilton, home of **Colgate University**, the restored **Palace Theater** and the recently renovated historic **Colgate Inn**. While in Hamilton enjoy the **Village Green**, weekly **Farmers' Market**, galleries and quaint shops. Continue south on Route 12-B to Earlville and the historic **Earlville Opera House**, antique shops and galleries. From Earlville continue south on Route 12B (becomes Route 12) for about 30 minutes to the City of Norwich. Turn east onto Route 23. The **Northeast Classic Car Museum** is about three blocks down and features more than 125 antique and classic cars and much more. Return to Route 20 via Route 12 north to Sangerfield.

Cazenovia

Amanda Bury Antiques - B2

Established 1981, an eclectic mix of fine antiques and funky found objects in historic Cazenovia since 1981. 19th century and early 20th century decorative arts, estate and vintage jewelry and garden items. Summer hours: Thur-Sat 11-5 and most Sunday afternoons. Other times gladly by appt. Follow me on Instagram and FaceBook. Go green, buy an antique! **97 Albany St. Cazenovia 315-655-3326 amandaburyantiques.com**

Brae Loch Inn - B2

A beautiful historic country inn on Route 20 in Cazenovia. As close to a Scottish Inn as you will find. Fine dining, pub menu, tavern, gift shop, outdoor dining & elegant overnight accommodations. **5 Albany Street, Cazenovia • 315-655-3431 • braelochinn.com**

Cazenovia Artisans - B2

Pottery, jewelry, pastels, watercolors, carved & wood turned bowls, traditional crafted wood furniture, oil paintings, unique collage and mixed media, painted porcelain, painted furniture, hand woven wearable scarves and shawls, purses & hats, hanging quilts and artisan soaps...we have something for everyone! All regionally made. The gallery also hosts Visiting Artists and other Exhibits during the year with receptions usually the first Friday of the month 5-8pm. Check our Facebook page or website for details. **39 Albany Street, Cazenovia • 315-655-2225 • cazenoviaartisans.com**

CAZENOVIA

The best kept secret

On Historic Rt. 20 in the Heart of New York State
Visit our events schedule at:
Cazenovia.com or call us at: **315-655-9243**

Central New York's Premier Showcase of Regional Fine Art and Craft

- Pottery
- Jewelry
- Weaving
- Glassware
- Lamps
- Watercolors
- Furniture
- Encaustics
- Fleeceware
- Ornaments
- Quilts
- Oils
- Soaps
- Bowls
- Toys
- Montage
- Porcelain
- Cards
- & Much More

CAZENOVIA ARTISANS
Always Hand Crafted. Always Distinctive
39 Albany Street, Cazenovia, New York

www.cazenoviaartisans.com

Empire Farm Brewery - B2

Empire Farm Brewery opened its doors in 2016. The 40,000 sq. ft building sits on 22 acres of virgin farmland. The objective of the Empire Farm Brewery is to expand the existing facility and agricultural component of Empire Brewing Co. to a stand-alone manufacturing and agritourism facility in Cazenovia, NY. **33 Rippleton Road, Cazenovia, NY • 315-655-2337 • www.empirebrew.com**

The Key - B2

The Key is a charitable consignment and donation shop, benefiting St. Peter's Episcopal Church and several local non-profit organizations. It has provided quality previously owned clothing and household goods since 1960. A member of St. Peter's Episcopal Church Family Ministries. Hours: Mon-Fri 10-5, Sat 10-4. **66 Albany St., Cazenovia, NY • (315) 655-3956 • www.thekeyconsign.com**

Lavender Blue - B2

A unique experience to step into the color and designs of Provence with the tablecloths of the South of France and wonderful oil cloths from Italy and much more. A must visit in the heart of Cazenovia. **74 Albany Street, Cazenovia • 315-655-1095 • lavenderblue.bz**

MacKinnon Liquors - B2

Full-service wine & liquor store. Large selection of wines from around the world and from the Finger Lakes. Many organic wines. Free parking and delivery. **75 Nelson Street, Cazenovia • 315-655-3926 • cazenoviachamber.com/mackinnon-liquors**

The Museum at the Cazenovia Public Library - B2

2,000 years of history: an Egyptian mummy, Native American and global artifacts, rare birds and wonders of the natural world. Also maps and paintings depicting the local area. M-F 9-9, Sat 10-5. **100 Albany Street, Cazenovia • 315-655-9322 • cazenoviapubliclibrary.org**

Hotel & Conference Center
80 Guest Rooms ~ Fitness Center ~ Indoor Pool
WiFi ~ Full Hot Breakfast ~ 5,000 SF Event Space

315-655-ROOM (7666)
25 Lakers Lane, Cazenovia, NY 13035
www.hampton.com

Mackinnon Liquors

Town & County Plaza, Cazenovia, NY 13035
315-655-3926
mackinnonliquors@yahoo.com

Mon-Thurs 9am-9pm; Fri & Sat 9am-10pm; Sun 12pm-6pm

LAVENDER BLUE
Mediterranean Linens and Gifts

74 Albany Street
Cazenovia, NY 13035

Web site: www.lavenderblue.bz

YouTube lavenderbluecazenovia
France in NYS

St. James Catholic Church

Fr. Kevin Corcoran, Pastor
6 Green Street, Cazenovia, NY 13035
315.655.3441

Saturday Vigil 5:30pm
Sunday 9:00
childcare at 9:00am Mass

Together in Christ, serving the Gospel by means of Word, Sacrament, and Charity.

All are welcome!

www.stjamescaz.org email: stjamesc@stjamescaz.com

Critz Farms and the Critz Farms Brewing and Cider Company - B2

Visit our beautiful diversified farm from March through December. Enjoy the Critz Farms Brewing & Cider Co. Tasting Room, festivals, events, and seasonal activities including maple syrup, berry picking, apple and pumpkin picking and Christmas trees. **Located 3.5 miles south of Route 20 on Route 13. 315-662-3355**
www.critzfarms.com and www.critzbrewandcider.com

St. James Roman Catholic Church - B2

A Catholic community in Cazenovia since 1847, St. James commits to serving God through worship, education, pastoral care, administration and development of the Parish Community, by means of Word, Sacrament and Charity. Weekend Mass Sat. at 5:30pm, Sunday at 9am, Child Care 9am Mass. **6 Green Street, Cazenovia • 315-655-3441 • stjamescaz.org**

Stone Quarry Hill Art Park - B2

Stone Quarry Hill Art Park, with 104 acres of conserved land and over four miles of trails, overlooks the breathtaking rural landscape of Cazenovia and Madison County, New York. Inspired by the relationship between art and nature, the Art Park is dedicated to providing a unique environment for the showcasing of art by emerging and established artists in natural and gallery settings. Its mission is to educate and engage the public through exhibitions, collections, interpretation, and community outreach programs in the arts. **3883 Stone Quarry Road, Cazenovia • 315-655-3196 • stonequarryhillartpark.org**

Madison/Bouckville/Munnsville

Butternut Hill RV Camping - C2

Come to Butternut Hill RV Campground for RVing, camping, and great family vacations. Located on the Historic Cherry Valley Turnpike. Stop in and enjoy the country setting and shop the many antique shops in Central New York. Like us on Facebook. **6893 State Route 20, Bouckville, NY 13310 • 315-893-7497**

CNY Fiber Festival - C2

June 8-9, 2019 a family-friendly festival with over 100 booths under cover, fiber animals, yarn, roving, equipment, handmade finished products from natural fibers, unique gifts by talented fiber artisans. Demonstration - sheep shearing, sheepdog herding, fiber arts. Fleece sale and wheel corral. Workshops and free lectures with an emphasis on knitting. Weaving competition. Children's activities including crafts to take home, children's art gallery. Please no dogs. **6893 US Route 20, Bouckville • 315-899-7792 • cnyfiberarts.org**

The Depot Antique Gallery - C2

Beautiful furniture & collectibles in our 7,000 square foot gallery. Open daily April thru October 10:00 am to 4:00 pm. Open daily November & December 10:00 am to 4:00 pm. Open Friday, Saturday, Sunday only for months of January thru March from 10:00 am to 4:00 pm. June Show 1st, 2nd, 3rd. August Show 13th thru 19th. **6768 State Route 20, Bouckville • 315-893-7676 • depotantiquegallery.com**

Foothill Farms Hops & Country Store - C2

Started in 2001 to promote the rebirth of the hops industry. Farm brewery now open. Sample beer made with 100% local ingredients and tour the hopyard to learn hops history. Homebrewing supplies and local products in the brewshop/tasting room. **5024 State Route 46, Munnsville • 315-495-2451 • foothillhops.com**

Hotel Solsville - C2

One mile north of Route 20 & downtown Madison. A refurbished 1800s hotel offering cozy tavern dining or full service dining in the period dining room. You are never a stranger at the Hotel Solsville. **7243 Valley Road, Madison • 315-893-7698**
hotelsolsville.com

Kountry Kupboard II - C2

Right on Route 20 3 miles east of Madison. Fresh baked goods all week, deli, bulk foods, cheese, chocolate, nuts, snacks, coffee, baking supplies and much more. M-F 8-5, Saturday 8-4. Closed Sunday. **7967 US Route 20, Madison • 315-893-7434**
earlyfarm.com

Quack's Village Inn - C2

Family dining in a relaxed, comfortable atmosphere. Serving the community since 1947. Breakfast, lunch & dinners with a wide variety of comfort foods. Good food at reasonable prices. Satisfaction guaranteed. **7239 Route 20, Madison • 315-893-1806**
quacksvillageinn.com



NOW OFFERING
CATERING
Open Daily for Breakfast,
Lunch & Dinner
7239 Route 20, Madison, NY
www.quacksvillageinn.com • 315-893-1806



Morrisville State College

Morrisville State College is a model of innovative, applied education. The college was ranked among the Best Regional Colleges in the North by U.S. News and World Report Best Colleges 2016 issue and was also recognized in the Top Public Schools, Regional Colleges North in the 2016 Best Colleges rankings. An internship program that prepares students for success in the workplace ranks among the top six in the nation. **80 Eaton Street, Morrisville • 315-684-6000**
morrisville.edu

Copper Turret Restaurant & Brewhouse

Enjoy our delicious & innovative menu featuring fresh, local ingredients, our extensive beer selection, and our team approach to service – no tipping necessary! Open for lunch & dinner Tuesday-Saturday. **17 West Main Street, Morrisville • 315-684-6699 • copperturret.com**

Morrisville State College Equine Rehabilitation Center

The ERC is open to the public and encourages travelers & horse enthusiasts alike to stop and tour our state-of-the-art facility. Please call to schedule a visit. **4414 US Route 20, Morrisville • 315-684-6601 • equinerehab.morrisville.edu**

Morrisville State College (MSC) IcePlex

Open year round! Boasting two NHL-sized rinks, full-service pro shop & snack bar. Home of SUNY Morrisville's Division III hockey teams, Blue Line Hockey, and other clubs. Check our website for public skating times; skate rentals are available. **105 Madison Rd, Morrisville • 315-684-6632**

Nelson Farms Country Store

Offering hundreds of New York State specialty food and gift products from all regions of NYS in our store and local beers, wines, and spirits in our tap room. Tastings and special events happening regularly. **3261 US Route 20, Nelson • 315-655-3301 • nelsonfarms.org**



2019 Road Challenge Series

2019 RACE SCHEDULE

ROUTE 20 ROAD CHALLENGE

(WWW.nvroute20.com) Participants who run in 5 events will receive a \$5 gift card, 8 events for a special 20th year cap or tie back and 11 events getting you a special 20th year large duffel bag!

A special thanks to our 2019 Road Challenge Sponsors- [Hotel Solsville](#) and [Pierce Auto Parts!](#)

April 7: 32nd Annual Fort to Fort, 5K/10K/Fun Run, *Rome*, Cindy Reynolds, 315-859-4015
creynolds@hamilton.edu, www.runsignup.com

April 13: The Zone Run, R.S. Community Center 5K/10K Run, 2 Mi. Walk, Kids "Little Loop" *Richfield Springs*, Bill Kosina, 315 749-3286,
jabkos@verizon.net,
www.runsignup.com/RSCC

May 3: 6th Annual MSC Milk Run, 5K Run/ Walk, *Morrisville*, Ashley Adams, 315 684-6743
adamsae@morrisville.edu

May 11: 5K Run/Walk for Hunger *West Winfield*, MaryLou Pustay, 315-794-5750, copper700@aol.com

May 18: 4th Annual Michael Hotaling Memorial 5K Run/Walk, *Hubbardsville*, Kerry Rice, 315 795-6793
hvdfrescuecap@yahoo.com
<https://racesonline.com/events/hubbardsville-fire-5k-michael-hotaling-memorial-run-walk>

May 19: 5th Annual Council Rock to Council Rock *Cooperstown*, Doug McCoy, mccoyd@clarksportscenter.com,
<http://www.clarksportscenter.com/events/2019-council-rock-council-rock-race/>

June 8: Patriot 10K & 5K Run / Walk *Rome*, <https://runsignup.com/Race/NY/Rome/Patriot5K10KRunWalk>

June 15: 5KRun/Walk for Veterans, *West Winfield*, Sue Will, 315-822-5988, willfarm@windstream.net

July 20: 11th Annual 5K Race for ChildRUN & 1 Mi. Walk, *Morrisville*, Jennifer Britton, 315-684-6400,
brittojr@morrisville.edu, www.morrisville.edu/childrens_center

July 21: 24th Annual Millers Mills 5K Sundae Run, 2 Mile Fun Walk and Ice Cream Social, *Millers Mills*, Megan King-Ratcliffe, 315-292-4144, king-megan@yahoo.com

July 27: Believe 271 5K Run/Walk, *Bridgewater*, Christy DeKing, 315-749-2848chrisdeki3@aol.com,
believe2715k.ityourrace.com

July 28: Ranger Run 5K Race, *Frankfort*, Morgan Whitt, morganwhitt@gmail.com,
<https://runsignup.com/Race/NY/Frankfort/RangerRun?remMeAtt=empty>

August 3: MadCO.W 5K Run/Walk, *Nelson*, Dick Benner, 315-439-6674,
windmillr1@twcnv.rr.com, www.inyourpace.org

August 8: 42nd Tromptown Run, *De Ruyter*, Win Skeele ,
winskeele@hotmail.com, www.tromptownrun.com

August 10: Landis Arboretum 12th Perennial 5K Forest Run/Walk, *Esperance*, David Roy, 315-427-3856 droy@midtel.net,
www.landisarboretum.com,
<https://runsignup.com/Race/NY/Esperance/LandisArboretum5KForestRun>

September 7: 6th Annual 9/11 Hero 5K, *Cooperstown*, Doug McCoy,
mccoyd@clarksportscenter.com,
<http://www.clarksportscenter.com/events/2019-rockin-around-cooperstown-ugly-sweater-runwalk/>

September 14: Falling Footsteps Cross Country (Fun in the Mud) 5K Run, Fun Walk, *Richfield Springs*, Bill Kosina, 315-749-3286, jabkos@verizon.net,
www.runsignup.com/rscemud

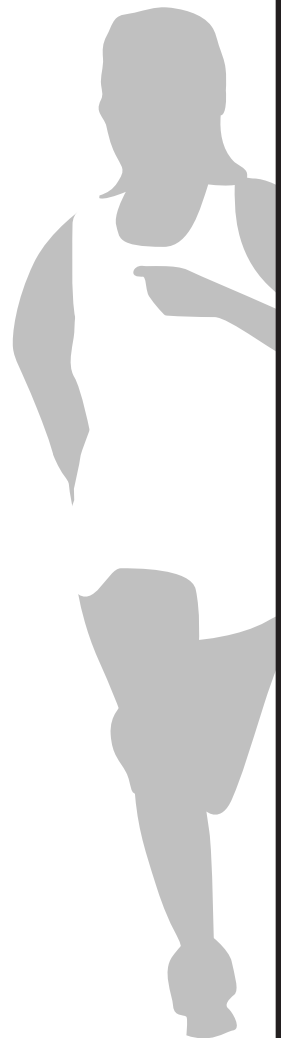
September 22: Co-op 5K, *Richfield Springs*, Dan Sullivan, 315 858-7023, dans4900@yahoo.com

October 5: Colie's Run 6K/1mi. Walk, *Richfield Springs* (Dyn's Cider Mill) Bill Kosina, 315-749-3286, jabkos@verizon.net, www.runsignup.com/colie

October 19: 22nd Annual Eaton 5K Run/Walk, *Eaton*, Craig North, 315-825-5691, southof20@yahoo.com

November 9: Veteran's Weekend 5K, *Cherry Valley*, Dave Lamouret, dlamouret@live.com

December 7: 6th Annual Rockin' Around Cooperstown Ugly Sweater Run/Walk, *Cooperstown*, Doug McCoy, mccoyd@clarksportscenter.com,
<http://www.clarksportscenter.com/events/2019-rockin-around-cooperstown-ugly-sweater-runwalk/>





Chenango Canal circa 1900

Suzi's Place Restaurant - C2

"Home cookin' at its finest" in the center of Bouckville serving breakfast and lunch daily. Daily specials plus a full menu and great selections for kids is what Suzi's is all about.

6798 Route 20, Bouckville • 315-893-4044

Victorian Rose - C2

Multi-Dealer Shop featuring an eclectic mix of vintage & antique items, home decor including Mid-Century & antique furniture, glassware, milk bottles, collectibles, plus much more. 3371 Maple Ave., Bouckville • 315-893-1786 • victorianrosevintage.com

Hamilton, Earlville, Poolville & Norwich

Colgate Bookstore - C2

Central NY's largest downtown independent bookstore with more than 23,000 titles for every age, interest and style. Children's book room, games, toys, computers and tech accessories, art & school supplies and more. 3 Utica Street, Hamilton • 315-228-7480 • colgatebookstore.com

Earlville Opera House - C3

The Earlville Opera House was founded in 1970 as a not-for-profit, volunteer-based, community service organization promoting the arts in a rural region of central New York by offering programs of cultural, educational, and historical significance; and preserving and restoring the architectural and historic integrity of the Earlville Opera House, a unique second-story theater constructed in 1892. 18 East Main Street, Earlville • 315-691-3550 • earlvilleoperahouse.com

Jewett's Cheese House - D2

Third generation family business specializing in aged NY Cheddar. Selling aged 1 year to 20 years. Many locally products. Cheeses, meats, honey, maple syrup, mustards and much more. Open Monday-Friday 9:30-5. Most Sundays from 10:30-3. Closed Saturdays. We ship. 934 Earlville Road, Earlville • 800-638-3836 • jewettscheese.com



Tell our members you saw them in the Route 20 Scenic Byway Guide!

Home Cookin' at its Finest!
Breakfast and Lunch Daily

6798 Route 20
Bouckville
315-893-4044

170+ Cars on Display
Open 9am-5pm Daily
Wheelchair Accessible
24 Rexford St
Norwich, NY 13815
607-334-2886
www.classiccarmuseum.org

Madison County Fair
Brookfield, NY
July 11th - 14^h 2019
July 9th - 12th 2020
"180 Years of Tradition We Treasure"
www.madisoncountyfairny.com

The Old Town of Eaton Museum - C2

Eaton, settled in the early 1790's, is the site of Madison County's first clearing and was home to Authors, Missionaries, Inventors & Wood, Taber & Morse Steam Engine Works. The old Town of Eaton Museum invites you to visit and learn the rich history of this historic town. Find us on Facebook. 2776 River Road, Eaton, NY 13334 • 315-684-8032 • www.historystarproduction.com

Northeast Classic Car Museum - C4

Over 170+ restored classic & vintage vehicles on display in five climate-controlled showrooms. Period fashions, original videos, vintage airplane engines, more. Open 9-5; days per week. Free parking, handicap-accessible, electric scooters available @ no charge. 24 Rexford Street, Norwich • 607-334-2886 • classiccarmuseum.org

Brookfield

Madison County Fair - D2

July 11-14, 2019. The Madison County Fair was established in 1839 and has since become beloved tradition in Madison County. Just a short drive through the countryside, the Madison County Fair has all the offerings of a traditional agricultural fair; animals, agricultural exhibits, midway rides, contests, pageants, shows, food and more!! 1968 Fairground Road, Brookfield • 315-899-5867 • madisoncountyfairny.com

Sangerfield/Waterville

Cruisin' Into Waterville - D2

September 21, 2019. A fun filled day with huge car, motorcycle and tractor show, softball tournament, parade, music all day with a variety of bands. Craft fair, BBQ, Mary Cleary Run/Walk and chili cook off. Entertainment for everyone at no charge. 147 West Main Street, Waterville • 315-841-4859 • cruisinintowaterville.com

Michael's Fine Foods & Spirits - D2

Located right on the Route 20 Scenic Byway, "Michael's Makes it Memorable" in this chef owned and operated contemporary setting. Enjoy a true dining experience combining a beautiful setting, delicious and savory dishes, well-chosen wines and an attentive expert staff. 7672 US Route 20, Sangerfield • 315-841-3077 • michaelsfoodandspirits.com

Village of Waterville - D2

Once known as the Hops Capital of the World and home of the famous Loomis Gang – just one mile north of Route 20 on US Route 12. Waterville has a noteworthy Historical Society along with fine restaurants, pubs and shops. 122 Barton Avenue, Waterville • 315-841-4221 • villageofwaterville.org



ALL UNDER ONE ROOF

Books • Children's Books • Toys & Games
Colgate Gear • Clothing & Jewelry • Computers • Cards & Gifts

3 Utica St. | Hamilton, NY | 315.228.7480 | colgatebookstore.com

Jewett's Cheese House

NYS Cheddar aged 1 year to 20 years



934 Earlville Road, Earlville, NY 13332
TOLL-FREE 1-800-638-3836 • jewettscheese.com

Enjoy beautiful scenery, great fishing,
hiking adventures and more!

BUTTERNUT HILL RV CAMPING

6893 State Route 20, Bouckville, NY 13310
butternuthill.net • 315-893-7497

Madison-Bouckville June Antique Weekend 2019 - C2
May 31-June 2, 2019 is a great weekend antique show right on Route 20 in Bouckville. Always FREE admission. Multiple dealers. Local antique shops open. **Route 20 in Bouckville • 315-427-5094 • madison-bouckville.com**

Madison-Bouckville Antique Week 2019 - C2
August 12-18, 2019. The 46th year of the greatest and largest in New York State and right on the Route 20 Scenic Byway in Madison-Bouckville, NY. Over 2,000 dealers and vendors plus food, fun and local antique shops. **Route 20 between Madison & Bouckville • 315-427-5094 • madison-bouckville.com**

NEW YORK'S LARGEST ANTIQUES & COLLECTIBLES SHOW



MADISON-BOUCKVILLE ANTIQUE WEEK

JUNE SHOW

MAY 31-JUNE 2, 2019

OVER 150 DEALERS FOR ONE OF THE
FIRST SHOWS OF THE SUMMER

Free Admission ★ Friday-Sunday 8am-5pm ★ Fun for EVERYONE!

UPCOMING SHOW:

Madison-Bouckville Antique Week
August 12-18, 2019

Located on scenic Route 20, Bouckville, NY
www.Madison-Bouckville.com

Bridgewater/Cassville

Bridgewater Historical Society - D2

Located in the restored former Union train station (on the National and State Register of Historic Buildings), housing displays of historical artifacts. **9685 US Route 20, Bridgewater • 315-822-6652 • townofbridgewaterny.org**

West Winfield

Jeannies Dream Motel - E2

A family owned motel that provides a country side of living with reasonable rates for the area. During your stay you will find a quaint clean and comfortable for you to get a restful stay. We are conveniently located on Route 20 with a view of rolling hills for a great way to see a sunrise or sunset. We are open year round for all your vacation needs to come and visit family or visiting local attractions. During the months of September through April we have limited rooms available. During this time we welcome having guests that are looking to visit family, see fall foliage or hunting. Find us on Facebook **1354 US Highway 20, West Winfield • 315-822-3468 • jeanniesdreammotel.com**

Kylie's Diner - E2

Open 7 days – Breakfast and Lunch. Fish Fry every Friday. Call for Daily Specials.
Hours: Sunday: 7 am to 12pm (noon) (Breakfast Only) Monday -Thursday: 7 am to 2 pm, Friday: 7 am to 8 pm (Breakfast Ends At Noon) (Cooking Ends At 7:45 pm) Saturday: 7 am to 1 pm. Takeouts always available. **370 West Main St., Route 20, West Winfield • 315-822-0035**



Tell our members you
saw them in the Route 20
Scenic Byway Guide!

Earlville Opera House



2019

earlvilleoperahouse.com // 315-691-3550

Enriching the CNY community through visual and performing arts since 1892!



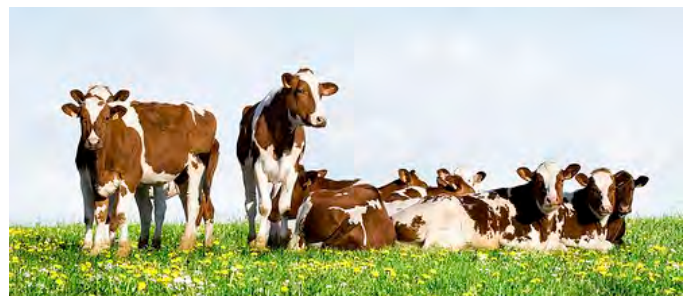
Cruisin' Into Waterville

Come join the fun **September 21, 2019**
in beautiful and historic Waterville, NY

www.cruisinintowaterville.com

The Red Door Dairy Store - E2

Sunday Breakfast Buffets & Friday Fish Fry. Open for Breakfast & Lunch during the winter. Summer – Open for Breakfast, Lunch and Dinner as well as soft and hard ice cream!!! Voted one of the Best in the Area on Frog 104!!! **661 US Route 20, West Winfield • 315-822-3493**





**RAISE A GLASS,
GET A SHIRT!**



heart of
new york
craft beverage trail™

Join The

**FRIENDS OF
FERMENTATION**



Begin your adventure at
HeartOfNewYorkBeverageTrail.com



#ocnewyork

This contest/giveaway is hosted by Oneida County Tourism.

© NISSED



Lake Chalet Campground

Oneida County

The Route 20 Scenic Byway has two communities in southern Oneida County – **Bridgewater** and **Sangerfield**. Just north of Sangerfield on Route 12 is the charming Village of Waterville, through which the Sangerfield River flows. Within Sangerfield is **Tassle Hill**, the highest point in Oneida County, climbing 1,942 feet. Elsewhere in Sangerfield is **Nine-Mile Swamp**, the historic home of the infamous Loomis Gang of the 19th century that terrorized Central New York. Bridgewater is largely an agricultural community. It is the birthplace of Stephen Moulton Babcock, called the “Father of Scientific Dairying”. Also in Bridgewater, the **Western Star Lodge** is the oldest Masonic Lodge in Oneida County, chartered in 1797, with such prominent signers of its charter as Robert Livingston, one of the five drafters of the Declaration of Independence. You’ll also see large Victorian homes that are now bed and breakfasts, restaurants and antique stores. Just a bit north of Bridgewater on Route 8, on a six-acre private lake is the **Lake Chalet Campground** and motel, complete with a flowing brook and fishing. **Chitting Pond**, adjacent to Route 20 and four miles west of the Village of Bridgewater, has a state boat launch.

F *Just a mile away.* From the junction of Routes 12 & 20 in Sangerfield continue just one mile north to **Waterville**, “Historic Hop Capital of the World”, settled in 1792 and referred to the “Garden Spot of New York State” because of its wealth of foliage and delightful climate. It is the birthplace of George Eastman who founded the Eastman Kodak Company. It is too known for that notorious family of outlaws, The Loomis Gang. Visit the Village of Waterville’s **Historic Triangle District**. The Waterville Historical Society building was built in 1842 and maintains a large collection of original hop equipment. The Village is home to the annual “**Crusin’ Into Waterville**” festival held the third Saturday in September.

Oneida County Tourism

Central New York’s Getaway Region. Utica, Rome, Verona and Sylvan Beach. Family Fun Destination. Enjoy the beach, 30 golf courses, Turning Stone Casino Resort, Vernon Downs Casino, Zoos, Fort Stanwix National Monument, Erie Canal and so much more. Now two locations to serve your travel information needs: **Exit 31, NYS Thruway, Utica AND in Historic Union Station, 321 Main Street, Utica • 315-724-7221 • oneidacountytourism.com**

Herkimer County

Herkimer County is a treasure trove of history and scenic beauty. The trip along Route 20 takes visitors through two communities in the south of Herkimer County: **West Winfield** and **Warren**. The 1869/70 history of West Winfield says: "West Winfield contains two churches, the West Winfield Academy, a bank, a grist mill, a saw mill, a tannery, a cheese box factory, a newspaper office and about 400 inhabitants". Today West Winfield is a quiet community home to the local schools of Winfield Township and a beautiful community park, but you'll want to explore some more. Just north of Route 20 in Richfield Springs, on Route 167, is **Sunset Hill** in Warren -- known as the Mrs. Eugene D. Stocker Estate -- is an historic home complex with a main house, guest house and other buildings designed by Dwight James Baum for Mrs. Stocker's seasonal estate. In Herkimer County, early development of large valley villages and good transport to the east and west was the **Erie Canal**. The country's oldest industry, Remington Arms, is still a major player in the county's economy. Herkimer County is also the home of a large section of the Erie Canal and world famous Herkimer Diamonds found at Herkimer Diamond Mines and the much smaller Ace of Diamonds Mine.

G *The History Loop.* The Mohawk Valley and the Erie Canal are filled with History. Exit Route 20 on State Route 51 north, just east of West Winfield and travel about 12 miles winding along Steel Creek to Ilion on the Mohawk River & Erie Canal. In Ilion is **Remington Arms**, the nation's oldest continually operating manufacturer and the only US manufacturer of firearms and ammunition. Remington Arms has a store located at Gems Along the Mohawk (See Excursion H).

Now you have several choices – if you do not have a New York State map, now would be a good time to pick up one! Note that Route 5 travels on the north side of the Mohawk River and Route 5S on the south side.

From Ilion via Route 5 continue north on Route 51, under Route 5S and turn right into the Ilion Marina for the **Dockside Café**, picnic area, RV park and restrooms, all on the Mohawk River/Erie Canal. Cross the Mohawk and travel west on Route 5 for the Revolutionary Byway through an area steeped in military history. OR travel Route 5 east to **Herkimer** and **Little Falls** and join the Southern Adirondack Trail. The village of Herkimer is filled with gems – literally. In Herkimer, on the Erie Canal you will find Gems Along the Mohawk, the Waterfront Grille and Erie Cruises (see Excursion H, Diamonds and the Erie Canal). In town you must stop at **Crazy Otto's Empire Diner** on Albany Street to enjoy an authentic 1952 Mountainview silver diner. For more of the history of Herkimer County, visit Herkimer's Historic Four Corners in Herkimer. It is composed of several historic buildings, all listed on the National Register of Historic Places. Their Museum is open weekdays, with Saturday hours in the summer.

From Herkimer follow Route 5 east to Little Falls, a once thriving mill village undergoing a renaissance along the Erie Canal with fine shops, antique shops, restaurants and accommodations. From Little Falls continue east on Route 5 to Route 169 to 5S to visit the historic Georgian style **General Herkimer Home**. Continuing east on Route 5S you will pass the historic little white Indian Castle Church built in 1769. As you near Fort Plain there is the Fort Plain Museum, a Church built in 1769. As you near **Fort Plain** there is the **Fort Plain Museum**, a former Revolutionary War Fort built in 1776 and Lock 15. At the junction of Routes 5S, 163 and 80, you can travel south on Route 80 to return to Route 20 (Excursion Q – Montgomery County) or continue on to Cooperstown as noted above. (For points of interest on Route 80, see Excursion Q in Montgomery County) OR, continue on 5S through Fort Plain for 3.5 miles to the village of **Canajoharie** where famous women's rights activist Susan B. Anthony once taught school. Joseph Brant, a Mohawk Chief and Molly Brant, a Mohawk Leader also lived in Canajoharie. Visit the businesses and **Arkell Museum** in historic

Canajoharie. If you have made it all the way to Canajoharie you can now return to Route 20 and the historic village of Sharon Springs via Route 10 south – and we hope you have enjoyed your excursion.

OR, from Ilion via Route 5S travel back and forth under the NYS Thruway and along the south side of the Mohawk River to enjoy several locks on the Erie Canal, rolling farmlands and interesting communities. From Ilion travel east on Clark/Main Street just a short three miles to the village of **Mohawk**. On East Main Street in Mohawk is the F.E. Spinner Home. Spinner was a Herkimer County Sheriff, Member of Congress and served as Treasurer of the United States under President Abraham Lincoln. From Mohawk you can travel south back to Route 20



via Route 28 south or continue south to Cooperstown (Otsego County) and Excursions I J, K or L, OR, continue east on route 5S for 22 miles to the village of Fort Plain, past the Fort Herkimer Church built in 1767, Locks 18, 17 (the highest lift lock in the world at 40.5 feet), and locks 16 & 15. At the junction of Route 169 and Route 5S, stop and visit the historic Georgian style **General Herkimer Home**, visitor center and grounds. Continue east on 5S to **Fort Plain** and **Canajoharie** as noted above.

H *Icons and Iconic Beauty.* From the center of **Richfield Springs** (Otsego County), follow Route 167 north to Jordanville, home of the **Holy Trinity Monastery of the Russian Orthodox Church** outside Russia. The community is dedicated to a life of prayer and obedience. It consists of impressive buildings and an other-worldly way of life.

Diamonds and the Erie Canal. Leaving Jordanville, follow County Route 18 west to Route 28 north and continue north into Herkimer to find some truly unique treasures. You'll be able to experience the Erie Canal firsthand aboard **Erie Canal Cruises**. The Erie Canal, which extends from Albany to Buffalo, shaped the course of settlement and commerce between the Atlantic Seaboard and the interior of the United States. The cruise is fun and historically fascinating, taking guests back to a time when the Erie Canal was only a vision and the boats were pulled by mules and horses. In addition to hearing the history of the canal, visitors travel through one of the locks -- raised or lowered 20 feet inside the lock walls -- for an unforgettable experience. At the Erie Canal Cruises dock you will want to experience **Gems Along the Mohawk** with more than 80 local businesses and products represented. Consider lunch or dinner at the **Waterfront Grille**, also located in the Gems Along the Mohawk building. Continue north on Route 28 to **Herkimer Diamond Mines** where guests literally mine for "diamonds" -- actually "doubly-terminated quartz crystals." These precious stones can be found in collections internationally. The Herkimer Diamond Mines Resort today boasts the largest jewelry, rock and gem store in the Northeast. It also has dining options at the **Miners' Table** and marvelous campsites along West Canada Creek at the **Herkimer Diamond Mines KOA Resort**, voted the best in North America for 2009. Return to Herkimer or Mohawk and pick up your journey on Routes 5 or 5S.

Herkimer/Ontonagon/Mohawk

Herkimer County - F1

A region rich in history and tradition located at the foothills of the Adirondacks. Family oriented communities and four seasons of recreation. A diamond in the rough that provides economic development as well as a great quality of life. **109 Mary Street, Herkimer • 315-867-1002 • herkimercounty.org**

Herkimer County Tourism

Herkimer County offers hundreds of years of history in the Herkimer Home State Historic Site, thousands of attractions and millions of years of geology in the Adirondack Mountains and Herkimer Diamond Mines. **3140 State Route 28, Old Forge • 315-369-9983 visitherkimercountyny.com**

Herkimer County Chamber of Commerce - F1

The Herkimer County Chamber is a not for profit membership organization dedicated to foster a positive business environment for private and public entities operating in the County, and to assure the successful continuation of and growth of current and new businesses in the County. **420 East German Street, Herkimer • 315-866-7820 herkimercountychamberofcommerce.com**

Red Roof Inn - F1

100 Marginal Rd., Herkimer, NY • 315-866-0490 • redroof.com

Little Falls

Shop Little Falls

Shop Little Falls is all about building a local living economy by supporting local trade and jobs. We value ALL local businesses, big and small, and we appreciate local business owners. We all want to work to create a thriving, collaborative community where all businesses prosper and thereby contribute to the well-being of all of our citizens. It's all about making your hard-earned money go further, fueling the local economy, and helping to preserve the unique character of Little Falls. **shoplittlefallsny.com**

Little Falls Antique Center - F1

Co-op antique center in historic Canal Place on the Mohawk River. Antiques, collectibles, artists, books, gifts and more. Open daily 10-5 except for 7 major holidays. **25 West Mill Street, Little Falls • 315-823-4309 • littlefallsantiquecenter.com**

Paca Gardens - F1

Stocking fine alpaca clothing, Paca Gardens has the largest selection in Central NY. Treat your feet to a pair of soft alpaca socks. Alpaca products make great gifts! Open M-F 10-5, Sat 10-4. **27 West Main St., Little Falls • 315-823-1100 • facebook.com/pacagardens**



Shop Little Falls
Think Local - Live Local - Grow Your City!
shoplittlefallsny.com



Unique shopping experience,
over 50 dealers. Open daily 10-5.
25 West Mill Street, Little Falls
315-823-0240
LittleFallsAntiqueCenter.com
Little Falls Antique Center



Paca Gardens
27 West Main St., Little Falls, NY 13365
Ph. 315-823-1100 / M-F 10am-5pm / Sat 10am-4pm

Stocking Luxurious Alpaca Products
Sweaters - Hats - Gloves - Socks - Fur Products & more!
Alpaca is a Natural fiber that is softer than cashmere,
hypo-allergenic, water, odor & wrinkle resistant!
Alpaca socks are the ultimate in comfort.
We have over 35 styles and many colors to choose from.

ALPACA PRODUCTS MAKE GREAT GIFTS!



Tell our members you
saw them in the Route 20
Scenic Byway Guide!

Otsego County

Once you enter Otsego County on Route 20, you'll have found a place where culture meets with applause & world class opera, national art exhibitions, theater, and concerts. Here, past meets present, from hands-on history museums to baseball games, historic sites and New York.

Otsego County is bursting at the seams with art, here are some locations to visit:
Glimmerglass Festival - <https://www.thisiscooperstown.com/attractions/glimmerglass-festival>

Yager Museum at Hartwick College - <https://www.thisiscooperstown.com/attractions/yager-museum-art-and-culture-hartwick-college>

The Art Garage - <https://www.thisiscooperstown.com/attractions/art-garage-cooperstown>
Fenimore Art Museum - <https://www.thisiscooperstown.com/attractions/fenimore-art-museum>

Cherry Valley Artworks - <https://www.thisiscooperstown.com/attractions/cherry-valley-artworks>

CANO - <https://www.thisiscooperstown.com/attractions/community-arts-network-oneonta>

Cooperstown Art Association - <https://www.thisiscooperstown.com/attractions/cooperstown-art-association>

GEM - <https://www.thisiscooperstown.com/attractions/gilbertsville-expressive-movement-inc-gem>

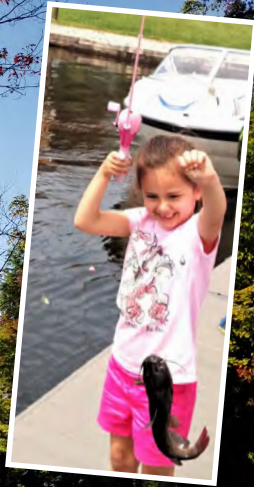
Henry March Gallery - <https://www.thisiscooperstown.com/attractions/henry-march-gallery>

The Smithy - <https://www.thisiscooperstown.com/attractions/smithy-gallery-and-clay-studio>
Cooperstown Summer Music Festival - <https://www.thisiscooperstown.com/attractions/cooperstown-summer-music-festival>

Glimmerglass Film Days - <https://www.thisiscooperstown.com/attractions/glimmerglass-film-days>

State's first cuisine trail, the **Cooperstown Beverage Trail**. The Route 20 Scenic Byway takes you through Richfield Springs, East Springfield and Cherry Valley. And from Route 20, make time to take an excursion into the Villages of Cherry Valley and Cooperstown. Richfield Springs, which celebrated 150 years in 2011, is home to three national historic districts. In the 19th century, this was a resort community known for its mineral springs. Stop to taste the famous sulphur water from the fountain in Spring Park and enjoy the unusual, rustic-style bandstand. Canadarago Lake is just south of the village and is the second largest lake in the Susquehanna watershed with great fishing and a public beach.

📍 **The Cooperstown Beverage Trail.** This pleasure trip takes visitors into Cooperstown along the road less traveled. Leaving Route 20 just west of Richfield Springs, follow Route 28 south for about 9 miles to the junction of Route 80 west. Following Route 80 west, plan to pay a visit to the newest members of the Cooperstown Beverage Trail: **Rustic Ridge Winery** and **Butternuts Beer and Ale**. Once you turn on Route 80 west, in about 8 miles you will find Rustic Ridge Winery on the north side of Route 80. Continue west on 80 to Route 51 in West Burlington. Turn south on Route 51 and travel about 6 miles through Garrattsville to Butternuts Beer and Ale brewery on the left. Return to Route 28 via Route 51 north and 80 east. Now travel south on Route 28 about 3 miles to the hamlet of Fly Creek. Turn left at the blinker light to Goose Street for the **Fly Creek Cider Mill**, a working cider mill and mill store and a founding member of the Cooperstown Beverage Trail. After loading up with tasty treats and beverages from Fly Creek Cider Mill, drive another three miles on Route 28 to the junction of Chestnut Street (Route 80) and turn left to the stoplight at Main Street. Drive east through Cooperstown on Main Street and turn south onto Estli Avenue to County Route 33. Follow CR 33 south to **Brewery Ommegang**, your next stop on the Cooperstown Beverage Trail. Tour to learn how their famous Belgian style ales are made and enjoy a bite in their all-new café.



Tour Herkimer County

From the Mohawk Valley
To the Adirondack Mountains

Old Forge
Adirondack Base Camp



Build your own stories on New York's
Historic Highways and Byways



OldForgeNY.com

Continue the journey south along CR 33 to Route 166, turn west to Village of Milford and the **Cooperstown Brewing Company**, your fifth stop on the Trail and home of several baseball-themed favorite local brews. Continue west on Route 166 to Route 28. Just a few miles south on Route 28 is the final stop on the Beverage Trail: **Bear Pond Winery**. The Winery features locally-produced wines as well as a large variety of private label wines. Return to Cooperstown on Route 28 north to Chestnut Street to the stoplight. Now enjoy the features of the Cooperstown Connection (Excursion K).

J Canadarago Lake East. An alternate way to wind your way to Cooperstown from Richfield Springs is to follow County Route 22 south along the east side of **Canadarago Lake**. From the center of Richfield Springs, at the stoplight by the park and famous Richfield Springs clock, turn south on County Route 22 (East Lake Road) and travel 6 miles to the hamlet of Schuyler Lake. Along the way you will pass the **Lake House**, a restaurant with accommodations built in 1843 and continuously welcoming guests for more than 170 years. The Lake House enjoys a beautiful location overlooking Canadarago Lake. Once you reach Schuyler Lake and the junction with Route 28, follow the directions in Scenic Tour “I”, south on Route 28 and the Cooperstown Beverage Trail.

K Cooperstown Connections. From Route 20, turn west on Route 80 at Springfield Center and enjoy the antique and gift shops of Springfield Center and continue your journey west on Route 80 past the **Otsego Golf Club** established in 1894 and one of America’s 10 oldest golf clubs. Travel on to the **Glimmerglass Festival** and the beautiful 9 mile journey along the west side of Otsego Lake, past the historic **Otesaga Resort Hotel** into the heart of Cooperstown to visit the legendary **National Baseball Hall of Fame** and Museum as well as the many fine shops and eateries. **The Cooperstown Chamber of Commerce** on Chestnut Street can be of assistance. Now enjoy the Cooperstown Beverage Trail (Excursion I) or journey back to Route 20 via Route 80 up the west side of Otsego Lake. As you leave Cooperstown, take time to visit **The Farmers’ Museum** and the **Fenimore Art Museum**. Continuing east on Route 80, travel about 9 miles past historic estates, lakeside homes and the Glimmerglass Festival, finally reaching Route 20 at **Springfield Center**. Turn east on Route 20 to Historic Cherry Valley.

L The Cherry Valley Turnpike Excursion. Until a few decades ago, Route 20 ran through the historic community of **Cherry Valley**. Starting in 1799, the Cherry Valley Turnpike construction that linked the west to Albany brought prosperity to the village. Just east of East Springfield, bear right on County Route 54 to the Historic Village of Cherry Valley. Cherry Valley was the gateway to the American Frontier and an important link between the Mohawk and the other nations of the Iroquois Confederacy. It was the site of one of the most notorious events of the Revolutionary War, the Cherry Valley Massacre. It was here, also, that in 1837, Samuel F.B. Morse developed the first working telegraphic machine while visiting his cousin. Visit the Cherry Valley Museum to view a collection of women’s clothing dating from the 1800s. At the Museum, pick up directions for the walking tour of Cherry Valley which resonates with history, early architecture and historic monuments. Return to Route 20 via Main Street east to CR 54 east.

Cooperstown/Otsego County Tourism

Arriving in Otsego on Route 20, you’ll find a place where culture meets with applause and world class opera, national art exhibitions, theater and concerts. Here, past meets present, from hands-on history museums to baseball games, historic sites and New York State’s first cuisine trail. **20 Chestnut Street, Cooperstown • 607-322-4046**

• thisiscooperstown.com

Catch me in COOPERSTOWN & OTSEGO COUNTY



A Getaway That Covers All The Bases!

National Baseball Hall of Fame & Museum
Beverage Trail and Farm Markets
Historic Sites and Museums
American Art and Culture
Scenic Lakes and Trails
Train and Boat Tours
Shopping and Dining
Family-Friendly Events



COOPERSTOWN



(607) 322-4046

ThisIsCooperstown.com | [Sign up for our e-newsletter!](#)

THE SIGNS OF SUMMER...



THE BLUE MINGO GRILL
CREATIVE LAKESIDE
CUISINE
RESERVATIONS:
607-547-7496

SAM SMITH'S BOAT RENTALS
PONTOON BOATS,
FISHING BOATS,
CANOES & KAYAKS
RESERVATIONS:
607-547-2581

LAKE CLASSIC OUTFITTERS
UNIQUE CLOTHING,
GIFTS AND LAKE
LIFESTYLE ACCESSORIES
607-547-2598

SAM SMITH'S BOATYARD
MARINE SALES,
SERVICE
AND STORAGE
607-547-2543

...ALL POINT TO ONE
FABULOUS LAKESIDE LOCATION

Sam Smith's Boatyard

Lake Otsego's Boating Haven Since 1956

2 1/2 miles north of Cooperstown on West Lake Road, 6098 State Highway 80
General Information: 607-547-2543 • www.bluemingogrill.com

Hyde Hall Historic Mansion

Guided Tours Daily:
10:00am - 3:00pm
May through October



www.hydehall.org
or call (607) 547-5098

267 Glimmerglass State Park Road, Cooperstown, NY 13326



Cooperstown Farmers' Market

101 Main St. in Pioneer Alley
Cooperstown, NY 13326

www.cooperstownfarmersmarket.org

Open Saturdays Year-Round

May - August 8 AM - 2 PM

September - December 9 AM - 2 PM

January - April 10 AM - 2 PM

Open Tuesdays in Summer

June - September 3 PM - 7 PM

Cooperstown

Bayside Inn & Marina - F3

Located on Otsego Lake, Bayside Inn & Marina offers pleasant, comfortable accommodations in a peaceful, wooded, lakeside setting. Enjoy the private beach, canoes, kayaks, picnic areas and gazebos. 7 miles from Cooperstown, 4 miles from Route 20.
7090 State Highway 80, Cooperstown • 607-547-2371 • baysidecooperstown.com

Cooperstown and Charlotte Valley Railroad - F2

Ride into history and beautiful scenery. Built in 1869, visitors can experience what was once the primary form of transportation throughout the country - rail travel. Special train rides throughout the year. 136 East Main Street, Milford • 607-432-2429 • lrhs.com

Cooperstown Distillery - F3

Handcrafted artisanal spirits featuring Beanball Bourbon, Fenimore Gin, Glimmerglass Vodka and Abner Doubleday "Double Play" Vodka. Free tastings and tours daily. Retail spirits, souvenirs, barware & glassware. Visit our Main Street location for cocktails, beer and wine. Shipping available. Open daily 11 am to 6 pm. 11 Railroad Avenue, Cooperstown • 607-282-4246 • cooperstowndistillery.com

Cooperstown Chamber of Commerce - F3

One of the nicest parts of the journey to Cooperstown is the beautiful countryside you will traverse to get here! We don't apologize for being off the beaten track, and we're sure you'll agree it's worth the trip. Be sure to stop in to our Visitor Information Center when you get here for up-to-date information on the many things to see and do in the Cooperstown area!
31 Chestnut Street, Cooperstown • 607-547-9983 • cooperstownchamber.org



Tell our members you saw them in the Route 20 Scenic Byway Guide!

COOPERSTOWN ART ASSOCIATION GALLERIES

Gallery Shop | Exhibits | Juried Shows

22 Main St. Cooperstown, NY

(607) 547-9777

www.cooperstownart.com

Gallery Hours: Daily 11-4pm, Sunday 1-4pm
Closed Tuesdays (Labor Day - Memorial Day)



Gallery Shop Open During Gallery Hours

THE SMITHY GALLERY & CLAY STUDIO

Three Themed Exhibits Every Summer

55 Pioneer St. Cooperstown, NY

(607) 547-8671

www.smithyarts.org

Gallery Hours: May - August
Tuesday - Saturday 10-5pm, Sunday 12-5pm



The Smithy Clay Studio is Open Year Round!



2149 County, Hwy 31, Cooperstown • 607-264-8431 • cooperstowncamping.com

Cooperstown Farmers Market - F3

If it's Saturday it's time to go to the Cooperstown Farmers' Market. 30 vendors from within a 50-mile radius offer the best in local fruits and vegetables, meat, poultry, eggs, milk, cheese, yogurt, honey, maple syrup, jams, bread, baked goods, wines, ciders and spirits. We also have artisan craftwork wool and alpaca wearables, yarn, fleece, hides, pottery, beeswax candles, folk art, doll clothes, and more. The heated, indoor market venue serves an estimated 40,000 shoppers over the course of the year with a festive atmosphere of live local music. The market also supports a number of nutrition programs including EBT/SAP benefits. A Program of Otsego 2000 since 1991. 101 Main Street, Cooperstown • 607-547-8881 • market@otsego2000.org

Cooperstown Shadow Brook Campground - G2

Full Service, family camping at its very best at the highest rated campground in the Cooperstown area per Woodalls. Large RV and tent sites, Cabin and Deluxe Cabin Rentals, and camping trailer rentals. 9 miles north of Cooperstown; 1 mile south of US 20. 2149 County, Hwy 31, Cooperstown • 607-264-8431 • cooperstowncamping.com

Hyde Hall State Historic Site - F2

Celebrating 200 years of Hyde Hall, a 50 room Mansion overlooking Otsego Lake. Built 1817 - 1835. Open May to October. Guided tours on the hour 10:00 - 4:00. Events, Hauntings - July & August & Candlelight tours - October. Glimmerglass State Park, Cooperstown, NY. (607) 547-5098 Hyde Hall.org for event details.

Ingalls Blueberry Hill - F3

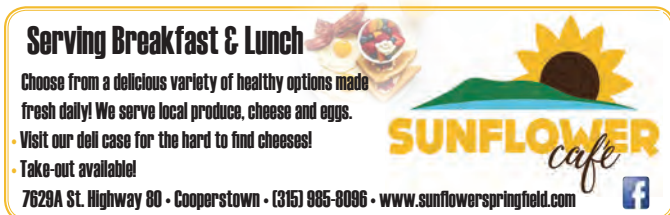
U-pick blueberry farm 4 1/2 miles south of Cooperstown off Route 28. Look for signs. Picking begins end of July for 4-5 weeks. Certified organic high bush blueberries. Open mornings and evenings 5pm until dark. "One of the nicest blueberry fields in NY." 136 Seminary Road, Cooperstown • 607-547-2600



Foundation of Russian History MUSEUM

Step back into
OLD RUSSIA

foundationrh.org • 315.858.2468
1407 Robinson Road, Mohawk, NY 13361



Serving Breakfast & Lunch

Choose from a delicious variety of healthy options made fresh daily! We serve local produce, cheese and eggs.

- Visit our deli case for the hard to find cheeses!
- Take-out available!

7629A St. Highway 80 • Cooperstown • (315) 985-8096 • www.sunflowerspringfield.com

SUNFLOWER cafe



Nationwide

Don Marsh Agency, Inc.
1 West Main Street, Suite 4
PO Box 1350
Richfield Springs, NY 13439
315-858-0805
607-432-7810 Fax

Sam Smith's Boatyard - F3
All points to one fabulous lakeside location. Lake Otsego Boating Haven Since 1956. 2 ½ miles north of Cooperstown. **West Lake Road, 6098 State Highway 80 • General Information 607-547-2543 • www.blugmingogrill.com**

Sunflower Café - F3
Serving Breakfast and Lunch, Soup, Salads, Sandwiches, Café Specialties. **7629A St. Hwy 80, Cooperstown, NY 13326 • 315-985-8096 • www.sunflowerspringfield.com**

Richfield Springs/ Schuyler Lake

Richfield Springs Chamber of Commerce - F2
The historic Village of Richfield Springs, once known for its resorts and spas, sits atop pristine Canadatego Lake, just west of Cherry Valley, 14 miles north of Cooperstown, and only 15 miles south of the NYS Thruway. With our first-rate school system serving as the hub of our community, Richfield Springs' distinctive Victorian architecture, quaint surrounding Amish communities, Farmers' Market, summer concerts, craft shows, and antique car events give this charming village the feel of stepping through time to a simpler era. Welcome! **315-217-1485 • richfieldspringschamber.org**

KOA - F2
Cooperstown KOA is a quiet, pet-friendly retreat surrounded by farms. It's within 20 minutes of the Baseball Hall of Fame and many other attractions in the foothills of the Adirondacks. Explore historic Cooperstown and watch your team play at Dreams Park. You're just a couple of miles from Otsego and Canadatego lakes for boating. The Glimmerglass Festival features international opera talent. In this quiet setting, you'll also see Amish neighbors with horse and buggy. Campers have plenty to do during the day and a tranquil place to rest at night. Enjoy the new pool, Saturday activities, video game room, weekend hayrides and more. **565 Ostrander Rd., Richfield Springs • 1-800-562-3402**

Dyn's Cider Mill - F2
Family owned since 1929. Making fresh cider, selling sweet apples and custom pressing. Local cheese, NYS maple syrup and home grown farm produce. Sunday Breakfast & dinner on Wednesdays. Open daily July through March, 9am-5pm. **7915 State Route 28, Richfield Springs • 315-858-2078 • dynscidermill.net**

Holy Trinity Monastery - F2
A Russian Orthodox monastic community, was founded in 1930 in Jordanville, NY. It became a haven for refugees fleeing religious and political persecution in the Soviet Union. Over the years, the monastery became a spiritual center of the Russian diaspora, preserving traditions that were being destroyed by the Communist regime in Soviet Russia. Notably, the monastery became a center for publishing of religious literature. In 1948, the monastery became home to Holy Trinity Seminary, an educational institution that prepares young men for service in the Orthodox Church. The monastery continues to thrive, with monastics and students coming from all over the world. Central to the life of the monastery are the daily services conducted in one of the monastery's five beautiful churches. Members of the brotherhood are actively engaged in publication, running a bookstore, painting icons, working in the apiary and vegetable garden, making candles and incense, baking bread, and hosting pilgrims who regularly visit the monastery.

The Foundation of Russian History Museum - F2
Located on the grounds of Holy Trinity Monastery, offers a fascinating glimpse into the history, art, and culture of Russia and the Russian immigrant community. The museum features spectacular objects from Russia dating from the 16th to the 20th century: paintings, military objects, books, religious art, documents, photographs, and decorative art. Among these are numerous items that belonged to the Russian Imperial Family and Russia's last Tsar, Nicholas II. Recently opened to the public, this museum is a little-known gem of Central New York. **1407 Robinson Road, Mohawk, NY 13361 • Website: foundationrh.org • 315-858-2468 • Museum Hours: Wed - Fri 2 PM to 5 PM; Sat & Sun 1 PM to 4 PM • Admission: General - \$7; Students & Seniors - \$5; Children under 12 - Free**

Hughson and Benson Associates Insurance - F2
Independent insurance agent- Home, Auto, Business, Life Insurance. **Contact: Mike Graveling; tel. 315-858-6050; fax 315-850-6046; 134 Main Street • PO Box 1520, Richfield Springs, NY 13439**

James Jordan Associates, Architects - F2
Established in 1984, we are an architectural firm experienced in educational, commercial and institutional facilities. We have been involved in the evaluation and renovation of existing building and additions as well as new construction. We have completed hundreds of projects across New York State and offer a full array of architectural services, including specialized experience in asbestos, accessibility and roofing. **68 Main Street, Richfield Springs • 315-858-8000 • jordanusa.com**

CR Custom Publishing - F2
All our publications have an emphasis on eye catching graphics, printing and format. Specializing in menus, rack cards, business cards, brochures, real estate and Visitor guide. **24 Elm Street Richfield Springs • 315-868-0126 www.crcustompublishing.com**

Don Marsh Agency, Inc. - F2
A full service insurance agency offering Nationwide home, auto and recreation insurance. We specialize in agribusiness, commercial/business & full financial services: life insurance, annuities, retirement and education planning. Come see us at our new location in the Price Chopper Plaza. • **1 West Main St., Suite 4, Richfield Springs • 315-858-0805**

Parkview Liquors - F2
Parkview is a full service liquor store. Located in the center of Richfield Springs. With over 350 wines in stock and a complete selection of liquors, cordials and drink mixers. Wine tastings throughout the summer. Follow us on Facebook for dates and times. Open Mon-Thurs. 10am-7pm, Fri-Sat 10am-9pm. **144 Main Street, Richfield Springs, NY 13439, 315-858-0430.**

Richfield Springs Community Food Cooperative - F2
Member owned: Cafe, Coworking Space, Local Food Market, Co-Kitchen. All are welcome to shop. **Main Street, Richfield Springs, NY 13439 • 315-858-7023. Email: rsccommunityfoods@gmail.com • www.rsccommunityfoods.org**

Azure Arts - F2
Hand-crafted pottery and fabric designs made by local artisan, Christina Ely Milliman. Milliman specializes in functional and customized ceramic wares, and handmade fabric designs for daily use and enjoyment. The studio, only ¼ mile off Route 20 is open by appointment during warm weather months. Personalized private classes are offered June through September. **1149 County Highway 27, Richfield Springs, NY • 518-281-6899 • Email: christina@azureartisans.com • azureartisans.com (coming soon!)**





Historic Windfall Dutch Barn

A pre-revolutionary restored structure
Home to history and entertainment
windfalldutchbarn.com

2009 Clinton Rd. • Fort Plain, NY
Phone: 518-993-2239



R&K The Rose & Kettle
4 Lancaster Street, Cherry Valley, NY 13320
607-264-3078
Matthew Begley, Chef/Owner

Springfield & E. Springfield- Cherry Valley/Roseboom

Greater Cherry Valley Chamber of Commerce - G2

Promoting local business through tourism and commerce. Quaint shops, great restaurants, museum, historical association and much more. On the "Original" Route 20 and still part of the Byway. **Cherry Valley • 607-264-3100 • cherryvalleychamber.org**

Town of Cherry Valley - G2

Located on "old" or original Route 20 (now County Rt. 54), Cherry Valley is a vibrant community of businesses and farms, history and the arts, with a purpose of preserving our place in history and conserving our natural and scenic resources. **607-264-9045 • cherryvalleyny.us**

Town of Springfield - G2

Established in 1797, the Town of Springfield is rich in history, natural beauty, and recreational opportunities. Known as "The Place to be on the 4th of July", Springfield has hosted an annual 4th of July Parade and Celebration in the hamlet of Springfield Center since 1914, adding an evening concert and fireworks display held at Glimmerglass State Park beach to the annual July 4th festivities in 2019. **129 County Route 29A, Springfield Center • 315-858-2186 • springfielddny.org**

The TePee - G3

Probably the most well known landmark and roadside attraction and gift shop along Route 20. Breathtaking 100 mile views of the Mohawk Valley and Adirondack Mountains. Part of Americana past. **7632 US Route 20, Cherry Valley • 607-264-3987 • thetepee.biz**

Windfall Dutch Barn - G2

An authentically restored Dutch Barn used as an entertainment location with annual concerts and rentals for special events located in the hamlet of Salt Springville, NY (Co Rd 31 about 4 miles north of Route 20 from East Springfield). **County Highway 31, Salt Springville • 518-993-2239 • windfalldutchbarn.com**

Central Valley Guest House - G3

A 1500 sq ft home with a fully equipped kitchen; snacks, coffee, tea, seltzer, provided. Downstairs: parlor, living room, dining room & full bath. Outside deck with bbq grill. Two upstairs bedrooms, one with an en suite bathroom. It is a quiet, private and relaxing location. Nonsmokers only. No pets. 110.00 a night (plus sales & occupancy tax) two night minimum. **1112 County Highway 50, Cherry Valley • 518-284-2370 • www.centervalleystay.com**

Plaide Palette of Celtic Art - G3

It's like Brigadoon! Importers of fine Irish, Scottish, and Welsh gifts. Specializing in British and Irish teas, musical instruments, Celtic jewelry, tea pots, custom wedding cake toppers, crystals, rocks, incense, fair trade and local products. Metaphysical and holistic jewelry plus witch balls, pendulums & custom made green men. **45 Main Street, Cherry Valley • 607-264-3769 • celticart.com**

Rose & Kettle Restaurant - G3

Fine dining in a 200 year old house in the center of Cherry Valley. Seasonal menus of American foods with a southern European influence and an emphasis on local ingredients. Reservations recommended. **4 Lancaster Street, Cherry Valley • 607-264-3078 • theroseandkettle.com**

Cherry Valley Historical Association/ Museum - G3

Located in a Federal style house (ca. 1815) with exhibits from 1778 infamous Cherry Valley Massacre to late 20th-century. Collection of 1830's memorabilia, antique fire engines, period clothing collections, kitchen exhibit and other period rooms. Memorial Day-Oct 15, daily 10-5. Closed July 4. **49 Main Street, Cherry Valley • cherryvalleymuseum.com 607-264-3303 or 607-264-3098**

A vintage Roadside Treasure, sure to be a surprising experience!

The TEPEE
CHERRY VALLEY NEW YORK

7632 US Highway 20, Cherry Valley, NY
607-264-3987 • thetepee.biz

plaide palette
Irish - Scottish - British - Tea - Food - Gifts
Fair Trade and Metaphysical
Crystals, Rocks, Incense

45 Main Street - Cherry Valley, NY
607-264-3769 • www.celticart.com

Coyotes Cafe - G3

Family style dining with indoor & outdoor seating. Daily specials, homemade soups, desserts. Relaxed and friendly dining in a local setting. **13 Main Street, Cherry Valley 607-264-8132**

Limestone Mansion - G3

Bed & Breakfast and more in historic Cherry Valley. Gourmet breakfast in a Victorian setting. Relax on our front porch and back deck. WiFi in our carriage house. 15 minutes from Glimmerglass Opera and Baseball Hall of Fame. **33 Main Street, Cherry Valley 607-264-3741 • limestone mansion.com**

Roseboom Historical Association - G3

Located in the restored Baptist Church, the Historical Association is dedicated to the preservation of the history of the Town of Roseboom. Events such as lectures, art shows & performances. RHA Art Show opening reception will be held on August 14 from 5:00 p.m. to 7:00 p.m. It will then run from 2:00 p.m. to 5:00 p.m., Thursday thru Sunday, August 15 – 18 and August 22. Pancake Breakfast Sept. 15, 8 AM to Noon. **State Highway 165, Roseboom • roseboom.historical@gmail.com**

Schoharie County Tourism

Discover the history, beauty and bounty of Schoharie County. Savor our seasonal harvests or enjoy an intimate farm-to-table dining experience. Explore our countryside's underground landscapes and the artisan shops and galleries in our villages... so many ways to make your visit Picture Perfect. **800 41-VISIT • upstatevacations.com**

Sharon Springs/ Carlisle

Sharon Springs Chamber of Commerce - H3

WELCOME to the Sharon Springs Chamber of Commerce! Founded in 1930, the Chamber is a non-profit organization whose mission is to promote business, civic and economic growth in Sharon Springs, to enhance the quality of life of the individuals working and residing in the area. **189 Main Street, Sharon Springs • 518-284-2880 • sharonspringschamber.com**

American Hotel - H3

Located on historic Main Street, Sharon Springs, and offering fine dining and lodging in a quiet, peaceful setting. Dinner Thurs-Sat at 5pm, Sunday 11:30-4. Daily July & August. Just a short drive from Cooperstown. **192 Main Street, Sharon Springs • 518-284-2105 • info@americanhotelnyny.com • americanhotelnyny.com**

Schoharie County



As you re-enter Route 20 from Cherry Valley, turn east on Route 20 and almost immediately you'll see **The TePee**, a 65 year old attraction and gift shop and an "original" to Route 20. Visitors to Schoharie County have

long called it "picture-perfect," and for good reason. The view is up close to the rolling pastures and fields brimming with nature's bounty. Schoharie County is also known as "New York's Land of Caves" and is home to the largest cave in the Northeast, **Howe Caverns** and the less well-known **Secret Caverns**, both in the hamlet of Howes Cave off Route 7.

M **Historic Sharon Springs.** A few miles east of the TePee is the village of Sharon Springs. Turn onto Route 10 north and travel down Main Street to the historic old section of Sharon Springs. In its prime, Sharon Springs catered to thousands of people who came for the healing powers of its mineral waters. Many quaint shops and unique eateries line Main Street as this village works to rebuild itself. A stop at the restored 1847 **American Hotel** will capture the uniqueness of this community. Sharon Springs can be explored while browsing antiques or visiting the **Sharon Historical Museum and Schoolhouse**. Or, discover the landscape by hiking, horseback riding and architectural walking tours. Return to Route 20 and turn east and travel about 5 miles to the junction of Routes 20 and 145 south at Sharon Hill and Scenic Excursion L.

N **Cobleskill Loop.** Traveling south on Route 145 through productive farmland and horse farms through the hamlet of Lawyersville to the **Village of Cobleskill**, settled in 1752 by grist mill owner Jacob Kobel. Cobleskill is the home of **SUNY Cobleskill College of Agriculture and Techology**, celebrating over 100 years since its charter by the New York State Legislature in 1911, one of the oldest institutions of its kind in New York State. Cobleskill is also home to the **Schoharie County Sunshine Fair** located on the original fairgrounds comprised of rare 19th century Victorian style buildings and located in the **Cobleskill Historic District**. Continue the journey on Route 7 east to the hamlet

of Howes Cave, home of the **Iroquois Indian Museum** and world renowned **Howe Caverns**. Continuing eastward on Route 7, through the hamlet of Central Bridge, birthplace of George Westinghouse, inventor of the railway air brake and largely responsible for the introduction of alternating current (AC) to the power industry, to Route 30A south and your tour of the beautiful Schoharie Valley.

O **Visit the Valley.** As you travel south on Route 30A you will begin your travel in the historically and agriculturally rich Schoharie Valley, along the Schoharie Creek which flows north into the Mohawk River at Schoharie Crossing. In less than 5 miles, enter the hamlet of Central Bridge, birthplace of George Westinghouse, inventor of the railway air brake and largely responsible for the introduction of alternating current (AC) to the power industry. Turn east on Route 7/30A south and continue on Route 30A south.

At the **Schoharie Valley Visitor Center** – on the west side of the road at the Dunkin Donuts entrance just past the I-88 interchange – pick up your copy of A Guide to the Schoharie Valley to discover all there is to see and do in the Valley. At the junction of Route 30 (end of 30A) is the **Apple Barrel**, a unique country shop and cafe. Route 30 is known as the Timothy Murphy Trail after a local folk hero credited with firing the shot that mortally wounded the English General Fraser in the Battle of Saratoga in 1777, thus depriving the English of leadership in that crucial battle. In fact, the Valley earned its nickname, "The Breadbasket of the American Revolution" when George Washington stationed troops here to protect one of the main sources of food for his army. Today, you will find farms of all shapes and sizes, raising everything from animals to asparagus to fruits and zucchini.

Continue on Route 30 to **Schoharie Valley Farms**, where the Ball family works the rich soil and preserves the heritage of the valley. As you enter the village of Schoharie, look for the **Old Stone Fort Museum** – a 1772 stone church that was fortified and attacked by British forces in 1780 – that celebrates and preserves the rich, historic legacy of the Schoharie Valley. Continuing on Route 30 south to the village of Middleburgh with more shops and eateries.

Route 30 south continues through the broad Schoharie Valley, past fruit and vegetable farms to the hamlet of North Blenheim, home of the **New York Power Authority**. On the NYPA grounds are historic Lansing Manor and the NYPA Visitors Center where everyone learns about energy, electricity and the environment. A bit farther south on Route 30 is **Mine Kill State Park** and then Gilboa, a former village now submerged in the Schoharie Reservoir which supplies water to New York City. To see some of the oldest tree fossils in the world, turn east on Route 990V, cross the Schoharie Creek Bridge and the fossil exhibit is on the left, next to the Town Hall.

Return to Route 20 by traveling back north on Route 30 to the village of Schoharie. In Schoharie, travel east on County Route 18 to **Wellington's Herbs and Spices**. Soak in the scenery, sit by the ponds and enjoy the hospitality.

Return to Route 30 and continue north for about 10 miles to the junction of Route 20 just west of Esperance.

P **The Arboretum Excursion.** At the junction of Route 30 and Route 20, turn west on Route 20 for one mile, cross the Schoharie Creek and turn north on Charleston Street and follow signs two miles to **Landis Arboretum**. The Arboretum is a 548 acre public garden featuring plants, trees, old growth forests, hiking trails and educational activities. Plan to spend the day, maybe with a picnic lunch. Return to Route 20 and travel the Scenic Byway east to Schenectady County and the village of Delanson.

Cobleskill & Howes Cave

Howe Caverns - H3

Howe Caverns Adventure Park - high in the Air-Deep in the Earth-New York's coolest getaway! Explore the cave, Pan for Gems, Zip, Climb, Jump, Rock and Roll! Something for everyone! Cave Open Year Round with Seasonal Hours. Howe High Adventure Open Summer Season. **255 Discovery Drive, Howes Cave • 518-296-8900 • howecaverns.com**

Grapevine Farms - H3

An 1850's farmhouse with 3 floors to shop. Top brand names like Brighton, Vera Bradley, Alex and Ani, Beekman 1802 and many more. Our farmhouse has a bakery, bistro and a wine cellar. Stop for a bit or stay all day! We're worth the trip! **2373 State Route 7, Cobleskill, 518-234-9148, www.grapevinefarms.com**

Super 8 by Wyndham Cobleskill - H3

Your SUPER choice in Schoharie county. A family friendly, pet friendly hotel with clean comfortable rooms conveniently located near many great attractions. Free wireless & SuperStart breakfast. **955 East Main Street, Cobleskill • 518-234-4888 super8cobleskill@gmail.com**

Gobbler's Knob Family Fun Park - I3

Offering miniature golf, driving range, ice cream parlor, pavilion rental for parties and corporate events. **3793 State Route 145, Cobleskill • 518-296-8008 • www.gobblerknob.us**



Locations

Chenango County

5 N Main Street, New Berlin, NY 13411
9 N. Main Street, Sherburne, NY 13460

Delaware County

3 Lake Ave., Stamford, NY 12167

Fulton County

4192 New York 30, Amsterdam, NY 12010
192 S. Main Street, Northville, NY 12134
99 N School Street, Mayfield, NY 12117
1032 E. Fulton Street, Gloversville, NY 12078
1 East Main Street, Johnstown, NY 12095
201 North Comrie Ave., Johnstown, NY 12095
198 North Comrie Ave., Johnstown, NY 12095
1596 New York 29A, Gloversville, NY 12078
76 S. Main Street, Gloversville, NY 12078

Herkimer County

27 E. Clark Street, Ilion, NY 13357
260 Mohawk Street, Herkimer, NY 13350
200 E. Main Street, Frankfort, NY 13340
22 N. Ann Street, Little Falls, NY 13365
97 N. Main Street, Dolgeville, NY 13329

Montgomery County

52 W. Main Street, St. Johnsville, NY 13452
18 Willette Street, Fort Plain, NY 13339
1 W. Grand Street, Palatine Bridge, NY 13428
38 W. Main Street, Fonda, NY 12068
17 E Main Street, Fort Johnson, NY 12070
1 Venner Rd., Amsterdam, NY 12010
151 Guy Park Ave., Amsterdam, NY 12010
132 Market Street, Amsterdam, NY 12010
185 East Main Street, Amsterdam 12010
129 Pawling Street, Hagaman, NY 12086

Oneida County

124 West Main Street, Waterville, NY 13480

Otsego County

119 Main Street, Richfield Springs, NY 13439
105 Chestnut Street, Cooperstown, NY 13326
7 Hollenbeck Rd., Worcester, NY 12197

Saratoga County

2370 Route 67, Amsterdam, NY 12010

Schoharie County

526 Highway Route 20, Sharon Springs, NY 13459
319 Main Street, Schoharie, NY 12157
288 Main Street, Middleburgh, NY 12122
391 W. Main Street, Cobleskill, NY 12043
2668 State Route 7, Cobleskill, NY 12043

Schenectady County

5246 Amsterdam Rd., Scotia, NY 12302
5060 Western Turnpike, Duanesburg, NY 12056
4032 State Highway 30, Esperance, NY 12066

Richfield's Octagon Barn circa 1950



Schoharie Valley

Schoharie Valley Association

As you drive along Route 30 in the Schoharie Valley, amidst the beautiful scenery, you will be riding on the Timothy Murphy Trail, named after one of the American Revolution local heroes. The Valley abounds with farm stands, unique shops, places to dine and places to stay. **Schoharie Valley, Route 30, Schoharie • schoharievalley.org**

Barber's Farm - I4

So much more than just vegetables! Barber's Farm has been a family-owned farming operation for more than 150 years. Located in the heart of the beautiful Schoharie Valley, we offer greenhouse crops, hand harvested vegetables, and pick your own produce. We are also proud to be the home of Barbers Farm Distillery. Come and visit our farm stand and new Tasting Room to try the wonderful "1857 Potato Vodka" **3617 State Route 30, Middleburgh • 518-827-5454 • barbersfarm.com**

Old Stone Fort Museum Complex - I3

A 1772 church fortified and attacked in the Revolutionary War and a museum for over 120 years. See thousands of artifacts in six historic buildings. May-Oct. **145 Fort Road, Schoharie • 518-295-7192 • theoldstonefort.org**

1743 Palatine House Museum - I3

Restored in 1971, the Palatine House is a medieval, German style construction built by Colonists for their minister, Peter Nicholas Sommers, who came to Schoharie County from Hamburg, Germany. Open weekends, Memorial Day through Columbus Day, 12-4pm. **Spring Street, Schoharie • 518-295-7505 • SchoharieHeritage.org**

Schoharie Colonial Heritage Association - I3

A non-profit, volunteer organization dedicated to acquiring and preserving historical sites in and around the Village of Schoharie. Our main goal is to restore such sites and make them available to the public for educational and cultural enrichment. **143 Depot Lane, Schoharie • 518-295-7505 • schany.org**

Schoharie Valley Farms/Carrot Barn - I3

Our family welcomes you to the Schoharie Valley. Enjoy its broad fields and soaring cliffs, take part in its history, and bring home the best of it's abundance from Schoharie Valley Farms, offering produce, gifts, onsite cafe and greenhouses! **5605 State Route 30, Schoharie • 518-295-7139 • schoharievalleyfarms.com**

Schoharie Valley Railroad Museum - I3

Historic station house, freight/engine house, weigh station, creamery and old mill. Several rail cars on premises. Listed on the National Register of Historic places. Open weekends memorial Day through Columbus Day, 12 to 4pm. **143 Depot Lane, Schoharie 518-295-7505 • schany.org**



Still Growing

A family farm
producing local food, providing local jobs
and a way of life for this generation
and those to come.

Schoharie Valley Farms
Home of The Carrot Barn

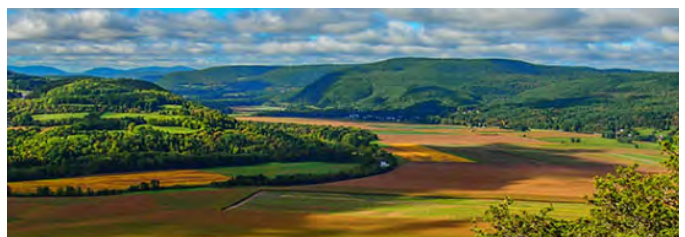
5605 State Route 30, Schoharie, NY 518-295-7139 • schoharievalleyfarms.com

Barber's Farm

So much more than just vegetables

1857 POTATO VODKA

3617 State Route 30, Middleburgh, NY 12122 • barbersfarm.com • 1857spirits.com



Museums at the Old Stone Fort

Seven historic buildings at a Revolutionary War battle site
History book and gift shop

See a fire engine older than me!

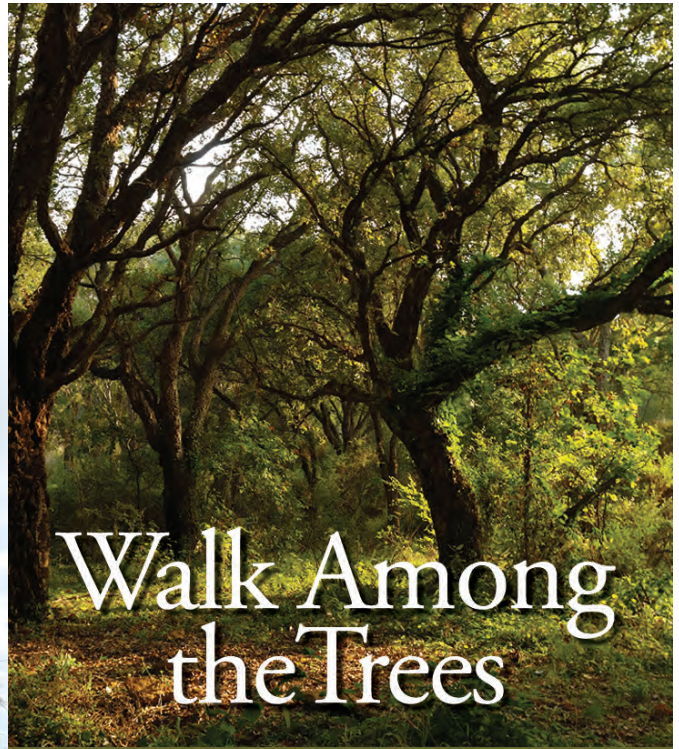
Open Daily, May through mid-October
145 Fort Road, Schoharie, NY 12157
518-295-7192 theOldStoneFort.org

PATH THROUGH HISTORY

Esperance

Landis Arboretum - I3

A large public garden overlooking the historic Schoharie Valley - Trees, shrubs, woodlands, natural areas, wetlands, old growth forests and many family programs. Two special plant sales each year - May & September. Open all year. **174 Lape Road, Esperance • 518-875-6935 • landisarboretum.org**



Walk Among the Trees

Miles of trails through plant collections and old growth forest. Birding, picnicking, classes, events, and more!



174 Lape Road, Esperance, NY
518-875-6935

facebook.com/LandisArb
landisarboretum.org



Montgomery County

Montgomery County has so much to offer from our natural beauty to our abundant agriculture to our deep-rooted history. We are a county of rich history - from Native American culture to Revolutionary War times to the rise of the Erie Canal - all highlighted at our historic and heritage sites and museums.

Montgomery County, located in New York's Mohawk Valley, was home to many Native Americans including Saint Kateri Tekakwitha, the first Native American Saint in the United States and Canada. Colonial times and our Revolutionary War heritage are important eras in our county's history as well as our nation's. Many of our attractions focus on these time periods including Fort Klock, Fort Plain Museum, Old Fort Johnson, Walter Elwood Museum, the Shrine of Our Lady of Martyrs, and the National Kateri Tekakwitha Shrine.

Montgomery County is home to the Mohawk River and on its banks riverside parks in a number of communities. Many host summer concert series with a variety of local, regional, and national musicians performing music in every genre, of every generation.

Schoharie Crossing State Historic Site features the history of the Erie Canal and its impact on the growth of New York State. The railroad, built along the same river plain as the canal, superseded the waterway. In the mid-twentieth century, the New York State Thruway was constructed parallel to the east-west routes of the canal and the railroad. While rail commerce and Amtrak still run through Montgomery County, some former rail beds are now a part of the famed Erie Canalway Trail, a multi-use trail popular with residents and visitors alike. Today the Mohawk River sees many recreational boats use its barge canal lock system in spring, summer and fall.

Visit our peaceful countryside and our friendly communities to experience our abundance of agricultural businesses. Farm stands, farmers markets, agricultural tours and farm-to-table dining can all be found in Montgomery County. U-pick orchards, seasonal fruits and vegetables, specialty meats and goods, and so much more fresh fare are available. Hummingbird Hills Winery in Fultonville hosts special events and tastings in the serene rolling hills of Montgomery County.

While Route 20 does not run directly through Montgomery County, we are considered a "Corridor Community" due to our close proximity to the Scenic Byway Corridor. Montgomery County communities such as Amsterdam, Canajoharie, Fonda, Fort Plain, and St. Johnsville are all within a 10 to 20 mile ride from Route 20. A short trip that will be well worth the ride.

Montgomery County – Made of Something Stronger. For more information call 1.800.743.7337 and logon to VisitMontgomeryCountyNY.com.

O **The Otsquago Trail.** From Route 20 in Springfield Center (between Richfield Springs and Cherry Valley) turn north on Route 80 and follow the ancient Otsquago Trail along the creek of the same name. It descends 1,100 feet over 17 miles to the Village of Fort Plain, NY on the Mohawk River. The Indian trail bridges the divide from the Susquehanna River Country to the Mohawk River system. It later became a road for Colonel Lewis Dubois's 5th Continental Regiment which was protecting General Clinton's right flank on the way to Otsego Lake in June of 1779 during the Revolutionary War.

The Indians referred to the creek as having "no father", probably because the source of the creek is an underground stream which makes it seemingly appear from nowhere. The creek follows a meandering path through Van Hornsville where Owen D. Young, founder of the Radio Corporation of America (RCA) was a lifelong resident, past farms, mill sites, country stores and antique shops. Continuing north the creek terminates at the Village of Fort Plain where the Revolutionary War fort by the same name was located. The fort served as the headquarters of Marinus Willett from 1781-83 and was visited by General Washington on his inspection tour of the valley in July and August of 1783.

Beginning around 1825, produce, grain and lumber was shipped along this route to warehouses in Fort Plain where it could be moved to markets along the Erie Canal. The Otsquago Creek is annually stocked with trout by the NYS Department of Environmental Conservation and has many hidden picturesque fishing spots. In Fort Plain follow Route 5S east for more sites (see Scenic Tour "G" - Herkimer County)

Montgomery County Tourism

Montgomery County offers extensive and valuable collections of natural and cultural history via our museums and scenery. Discover a historical timeline spanning hundreds of years from Native American culture to the Revolutionary War to the Erie Canal. **1166 Riverfront Center, Amsterdam • 800-743-7337 • VisitMontgomeryCountyNY.org**

A VALLEY OF HISTORY, ADVENTURE AND ALLURE CARVED BY THE MIGHTY MOHAWK

I  NY
iloveny.com



MONTGOMERY COUNTY NY

Pedal, paddle and explore Montgomery County's must-see attractions, outdoor adventures, and rich history.

VisitMontgomeryCountyNY.com

© NYSD&D

We welcome you to the picturesque villages of Canajoharie, Palatine Bridge, Fort Plain, and St. Johnsville in the heart of the Mohawk Valley. Located just 10 miles north of Route 20 — at the intersections of Routes 5 & 10, Routes 5 & 80, and at Exit 29 of the NYS Thruway — the following businesses are close and convenient.

Antiques Stores

Settler's Block Antiques — Great variety of antiques and collectibles. Owner Jim Sancho. **39 Church Street, Canajoharie • 518-673-2997 • settlersblock@gmail.com**

Attractions

Arkell Museum at Canajoharie — Featuring permanent and changing exhibitions of American art by Winslow Homer and more; Regional Art Galleries feature exhibitions of work by contemporary NYS artists; Gift Shop. Summer Hours: Tues-Fri 10-5; Sat & Sun Noon-5. **2 Erie Boulevard, Canajoharie • 518-673-2314 • arkellmuseum.org**

Fort Plain Free Library — Across from Haslett Park's bandstand and restored fountain, the library offers a display of artifacts from the Clinton Liberal Institute, a sampling of genealogies, local history texts, and brochures in its Visitors Center. **19 Willett Street, Fort Plain, NY • 518-993-4646**

Fort Klock Historic Restoration — Restored, fortified homestead constructed in 1750 in the Mohawk Valley and site of a moved, restored Dutch barn, 19th century schoolhouse, blacksmith shop. Open Memorial Day to Columbus Day, 9 a.m.-5 p.m. **7214 NYS Route 5, St. Johnsville, NY • 518-568-7779 • fortklock.com**

Nellis Tavern/Palatine Settlement Society — Historic 1747 tavern open for tours on Sunday, June through September, from 1 to 4 p.m. **NYS Route 5, 1 mile west of St. Johnsville, NY • www.palatinesettlementsociety.org**

Margaret Reaney Memorial Library & Museum — Built in 1909, hosts genealogical information, collections of fine art and sculpture, Civil War artifacts, Erie Canal and Palatine German history, & more. **19 Kingsbury Ave., St. Johnsville, NY • 518-568-7822**

Montgomery County Department of History & Archives — Greek Revival structure houses research library, genealogical, and historical records. Open weekdays. **Old Courthouse, 9 Park St., Fonda, NY 12068 • 518-853-8186**

Shrine of Our Lady of Martyrs — National shrine of North American martyrs and birthplace of St. Kateri Tekawitha. 400+ acres of landscape, Masses in the Coliseum, museum, visitor center. Open May to October. **136 Shrine Road, Fultonville, NY 518-853-3033 • www.martyrshrine.org**

Amish Community — Including auctions of Amish goods in Fort Plain

Canalway Trail Bike Path — All along the Erie Canal

Van Alstyne Homestead Society and Museum — Houses early colonial artifacts, furnishings, and 19th century images of historic sites by Rufus Grider; and highlights the extraordinary history of the c. 1730 Van Alstyne house in Canajoharie, NY. Open every Saturday from Memorial Day Weekend to Labor Day Weekend from 1-4 p.m. Follow us on Facebook at <https://www.facebook.com/VanAlstyneHomestead> and Twitter, @VahsCanjo for more information. **PO BOX 372, 42 Moyer Street, Canajoharie, NY 13317**

Walking Tour Reflecting African — American Life and the Abolitionist Movement — Maps located in the Mohawk Valley Regional Visitors Center, **89 Church St., Canajoharie, NY • 518-673-4711**

Wintergreen Park — Waterfalls, hiking, and picnicking on 72 acres of woodland; scenic overlook at end of mile-long trail, 45 feet above Canajoharie Falls. Village of Canajoharie, **75 Erie Blvd., Canajoharie, NY 13317 • 518-673-5512**

Canajoharie Country Club — beautiful 18 holes. 518-673-8183 canajohariegolf.com

St. Johnsville Marina — Campsite, marina, riverfront park. Established 1956. **518-568-7406 • stjohsville.com**

Margaret Reaney Memorial Library & Museum

19 Kingsbury Avenue, St. Johnsville, NY 13452 • 518-568-7822
Margaretreaneylibrary.blogspot.com

- Original art work including oil paintings and bronze sculptures
- Exhibits dedicated to the Erie Canal, Civil War, Palatine Germans, Antique Farm and Carpentry Tools
- Robert M. Hartley Collection, military buttons, powder horn sketches and archeological artifacts
- Extensive Genealogy and Local History reference collection




Hours: Monday 9:30 AM – 8:30 PM
 Tuesday, Wednesday & Friday 9:30 AM – 5:00 PM
 Saturday 10 AM – NOON • Closed Thursday & Sunday
Tours available by chance or appointment



Tell our members you saw them in the Route 20 Scenic Byway Guide!

Mohawk Valley Regional Visitor Center - H2

The RVC in downtown Canajoharie is close to the Barge Canal, Erie Canalway bike trail and I-90. Volunteer-driven and handicapped accessible, it offers tourist information about Montgomery County area attractions and accommodations, maps, travel apps, and free wifi. **89 Church St, Canajoharie • Call 518-673-4711 • mohawkvalleycollective.com**



Van Alstyne Homestead Society and Museum

PO Box 372, 42 Moyer Street
Canajoharie, NY 13317

The Van Alstyne Homestead Society is the volunteer organization dedicated to preserving the building, collections, and extraordinary history of the c. 1730 Van Alstyne house in Canajoharie, NY.
 Please join us by becoming a member of the Society!

Open every Saturday from Memorial Day Weekend to Labor Day Weekend from 1:00 p.m.-4:00p.m.

Please follow us on
 Facebook: <https://www.facebook.com/VanAlstyneHomestead>
 & Twitter @VahsCanjo

ARKELL MUSEUM AT CANAJOHARIE

American Art & Mohawk Valley History



www.arkellmuseum.org • 518.673.2314 • Thruway exit 29



Dining

5S Diner — "The place where good friends meet." Homemade daily specials, all you can eat spaghetti Wednesdays, fish fry Fridays and prime rib on Saturday. Mon-Sat 7-7, Sun 7-12:30 breakfast only. **12 Hancock Street (Route 5S), Fort Plain**
518-993-5306

Retail

Picture Perfect Art Gallery and Framing Shop — Welcome to our fine art gallery, come in and browse. Look at our collection of original art, by local and regional artists. You'll find oil paintings, watercolors, sculptures, and prints. We also offer framing, jewelry, pottery wood craft and fine art gifts you won't find anywhere else. **5 Erie Boulevard, Canajoharie • 518-673-3066**

Central NY B&B Association

www.CNYBB.COM

or

BEDSALONGTHEMOHAWK.COM

Clean, comfortable, approved & monitored B&B homes & Inns within a 60 minute radius in, around and about the Utica/Cooperstown area. Serving the Mohawk Valley, Adirondack Foothills, Cooperstown & Leatherstocking Regions in Central Upstate New York.

A unique cultural, recreational, historic, educational and shopping area to discover.



Fort Plain Museum - G2

Preserving and interpreting the site of Revolutionary War Fort Plain/Fort Rensselaer. The museum houses both Revolutionary War era and Native American collections. Visitors can explore the fort's outdoor exhibits on a walking tour of the adjoining 20 acre hilltop park. **389 Canal Street, Fort Plain • 518-993-2527 • fortplainmuseum.com**



MVC Regional Visitors Center

89 Church Street, Canajoharie, NY 13317

Hours 10-6 Daily

Arts and Culture, History, The Adirondacks, or just exploring the scenic countryside. No matter what you want to experience while visiting, you can find out more at the Regional Visitors Center. Conveniently located, central to everything you want to see...and more.



NEW YORK STATE'S LONGEST GARAGE SALE!

Check our website for information on New York State's Longest Garage Sale and list of car shows and cruise-ins!

www.nyroute20.com



Open Daily 10-4
May 20 - Sept 4
518-993-2527



In the heart of

Mohawk Country
America's First Frontier



- Revolutionary War Museum
- Original 18th Century Earthworks
- Site of Fort Rensselaer

Follow Rt. 80 North into the Valley
389 Canal Street Fort Plain, NY



Schenectady County

A little history. Entering Schenectady County from the west on Route 20, the first short excursion is to the village of **Delanson Historic District** via Route 395 south. The Village of Delanson was settled in 1861 when construction of the Albany & Susquehanna Railroad started. The district includes distinctive examples of a variety of popular Victorian period architectural styles including Italianate, Carpenter Gothic and Queen Anne. Return to Route 20 and continue east.

In about one mile **Christ Episcopal Church** is on the left (north) side of Route 20. The church is located in center square of the original Village of Duanesburg. Built by James Duane in 1762, it is the oldest, unaltered Episcopal Church in New York State.

S **A little nature.** Just before the church, turn north onto Duanesburg Churches Road. Travel 2.5 miles then turn east onto Lake Road (County Route 88) for 0.7 miles to the entrance to the Schenectady County Forest Preserve on the left. **The Schenectady County Forest Preserve** is a 102-acre forest where the public can hike, hunt (November 15-December 15), fish, cross-country ski and snowshoe. This preserve is historically significant as one of James Duane's original Great Lots where remains of stonewalls, a farm house foundation and a small family cemetery can be found. From the forest preserve, continue east on Lake Road. In about one-half mile, you'll find the beginning of **Featherstonhaugh State Forest**, named after George W. Featherstonhaugh. Featherstonhaugh practiced scientific farming, crop rotation and served as the United States' first geologist and agricultural commissioner. He is also considered the father of the steam railroad. Trail heads exist on either side of Lake Road but we recommend you travel 2 miles to the end of the forest and turn left on Judith Lane to the parking area and trail head. Walk from the parking area to the lake that you can explore by your own canoe or kayak. Watch for the Great Blue and Green Herons. In the fall, enjoy the sight of migrating waterfowl. Retrace your steps by traveling back west on Lake Road to Duanesburg Churches Road and turn south to Route 20.

Travel east on Route 20 to the Town of **Duanesburg**, the westernmost town in Schenectady County. The town is named James Duane. He was a member of the first Provincial Congress of 1774 and was associated with Patrick Henry, John Adams and other Revolutionary leaders. He died suddenly in 1797 and is buried under Christ's Church in the town that bears his name. (While in Duanesburg, look up in the sky! You might just catch a glimpse of skydivers from the Duanesburg Skydiving Club, located at the intersection of Routes 20 and 7. And, yes, you can give it a try – by appointment.) Travel though Duanesburg on Route 20 to the junction of I-88 and the easternmost terminus of the Route 20 NY Scenic Byway. But wait, there is more...

Chamber of Schenectady County - J2

A full service Chamber of Commerce offering business, relocation, education and program services. Get a full list of businesses and local events at the Chamber website.
306 State Street, Schenectady • 518-372-5656 • schenectadychamber.org



T **A little more history.** For a final history tour, we recommend starting at the **North Mansion and Tenant House** (558 North Mansion Road, south off Route 20 just east of Duanesburg) the first manor house of the Duane Family. Visitors included Baron von Steuben. Continue on North Mansion Road and turn right (west) onto **Duane Lake Pond Road**. While all lake property is privately owned, the view is breathtaking. Follow Duane Lake Pond Road around to rejoin North Mansion Road to head back to Route 20. Turn west onto Route 20. In about 0.1 mile, turn south onto Featherstonhaugh Road. At the end of the road, you'll find **Duane Mansion**, now a private home, with Federal-style barns on the property that are rare survivors in New York State. Return to Route 20. We hope you enjoy your visit.

Fox Country Gun & Tackle

A country store located on a working dairy farm in the beautiful Mohawk Valley. The Adirondack Adventure starts here. Hours 10am-2pm. **176 McGrew Rd., Amsterdam, 518-389-5211 • www.facebook.com/foxcountrygunandtackle**

Back Barn Brewing Company

Come pair the surroundings with quality craft beer. **7082 Western Turnpike, Delanson, NY, www.backbarnbrewing.com**

Come pair the surroundings with quality craft beer



Back Barn Brewing Company

7082 Western Turnpike Delanson, NY

www.backbarnbrewing.com

Located on Historic Route 20

Hours

Wednesday 4-8pm
 Thursday 3-9pm
 Friday 12-10pm
 Saturday 12-10pm
 Sunday 12-6pm



FOX COUNTRY GUN & TACKLE

176 McGrew Rd. • Amsterdam, NY

Hours: 10am-2pm

518-389-5211

www.facebook.com/foxcountrygunandtackle



The Route 20 Association of New York State, Inc. is a not for profit 501(c)(3) all volunteer organization serving as "Stewards of the Route 20 Scenic Byway." As a not for profit the Association sustains itself from membership and advertising fees, business sponsorships and membership from individuals interested in protecting the heritage of historic US Route 20. Please consider joining us.

To join or donate, visit nyroute20.com and click on the **APPLICATION** or **DONATE** button. To sign up for our e-newsletter, visit the website and click on the **CONTACT US** button.

We would always appreciate a 'Like' on Facebook at NYS Route 20 Scenic Byway

Thank you for your support of our members and sponsors, and our efforts to enhance the Route 20 Scenic Byway.

**We gratefully acknowledge
our 2019 sponsors:**



*An employee and family owned business
of 337 convenience shops
in Upstate New York and Vermont.*



**Route 20 Association of New York State
PO Box 20, Richfield Springs, NY 13439
nyroute20.com**

Information for this map and guide has been compiled from a number of reliable sources. While we strive for complete accuracy, we can not guarantee it. If you would like to make any corrections or additions, go to www.nyroute20.com or write to us at the address above. Any errors or omissions will be verified and corrected in the next edition. © 2019, Route 20 Association of NYS.

ROUTE 20 SCENIC BYWAY MAP AND GUIDE



***One of
America's
most historic,
bountiful and scenic
roadways***



I ♥ NY



**Produced by the
Route 20 Association of New York State
www.nyroute20.com**

